

CITY OF SURREY

BY-LAW NO. 15625

A By-law to close and to remove the dedication  
of a highway of portions of 27B Avenue.

.....

WHEREAS pursuant to Subsection 40(1)(a) of the *Community Charter*, S.B.C. 2003, c. 26, the Council may, by by-law, close all or part of a highway that is vested in the municipality to all or some types of traffic;

AND WHEREAS pursuant to Section 40(2) of the *Community Charter*, S.B.C. 2003, c. 26, the Council may, by by-law, remove the dedication of a highway that has been closed by a by-law under Subsection 40(1)(a).

NOW THEREFORE the Council of the City of Surrey in open meeting assembled, ENACTS as follows:

1. Those portions of road lying in Section 22 Township 1, New Westminster District, shown outlined in heavy black line on a Reference Plan attached hereto, and forming part of this by-law, duly signed by the Mayor and Clerk, prepared by G.A. Hol, B.C.L.S. on the 15th day of January, 2005, and more particularly described as follows:

That portion of road dedicated on Plan 8887, having an area of 505.6 square metres and called Parcel A;

That portion of road dedicated on Plan 1642, having an area of 558.4 square metres and called Parcel B;

(hereinafter referred to as those portions of 27B Avenue)

shall be closed to traffic.

2. The dedication as highway be removed of said portions of 27B Avenue.
3. This By-law may be cited for all purposes as "Surrey Close and Remove the Dedication of Highway of Portions of 27B Avenue at King George Highway By-law, 2005, No. 15625".

READ A FIRST, SECOND AND THIRD TIME on the 24th day of January, 2005.

NOTICE OF INTENTION

ADVERTISED on the 29th and 30th day of January and on the 5th and 6th day of February, 2005, in the SURREY LEADER/PEACE ARCH Community newspaper.

RECONSIDERED AND FINALLY ADOPTED, signed by the Mayor and Clerk, and sealed with the Corporate Seal on the 7th day of February, 2005.

\_\_\_\_\_ MAYOR

\_\_\_\_\_ CLERK

h:\by-laws\adopted\2005\clk15625.blw.doc

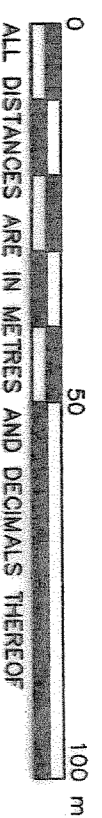
PLAN BCP

DEPOSITED IN THE LAND TITLE OFFICE  
AT NEW WESTMINSTER, B.C.  
THIS \_\_\_\_\_ DAY OF \_\_\_\_\_

REGISTRAR

PURSUANT TO SEC. 120 OF THE LAND TITLE ACT  
B.C.G.S. 92G.006

SCALE 1 : 1000



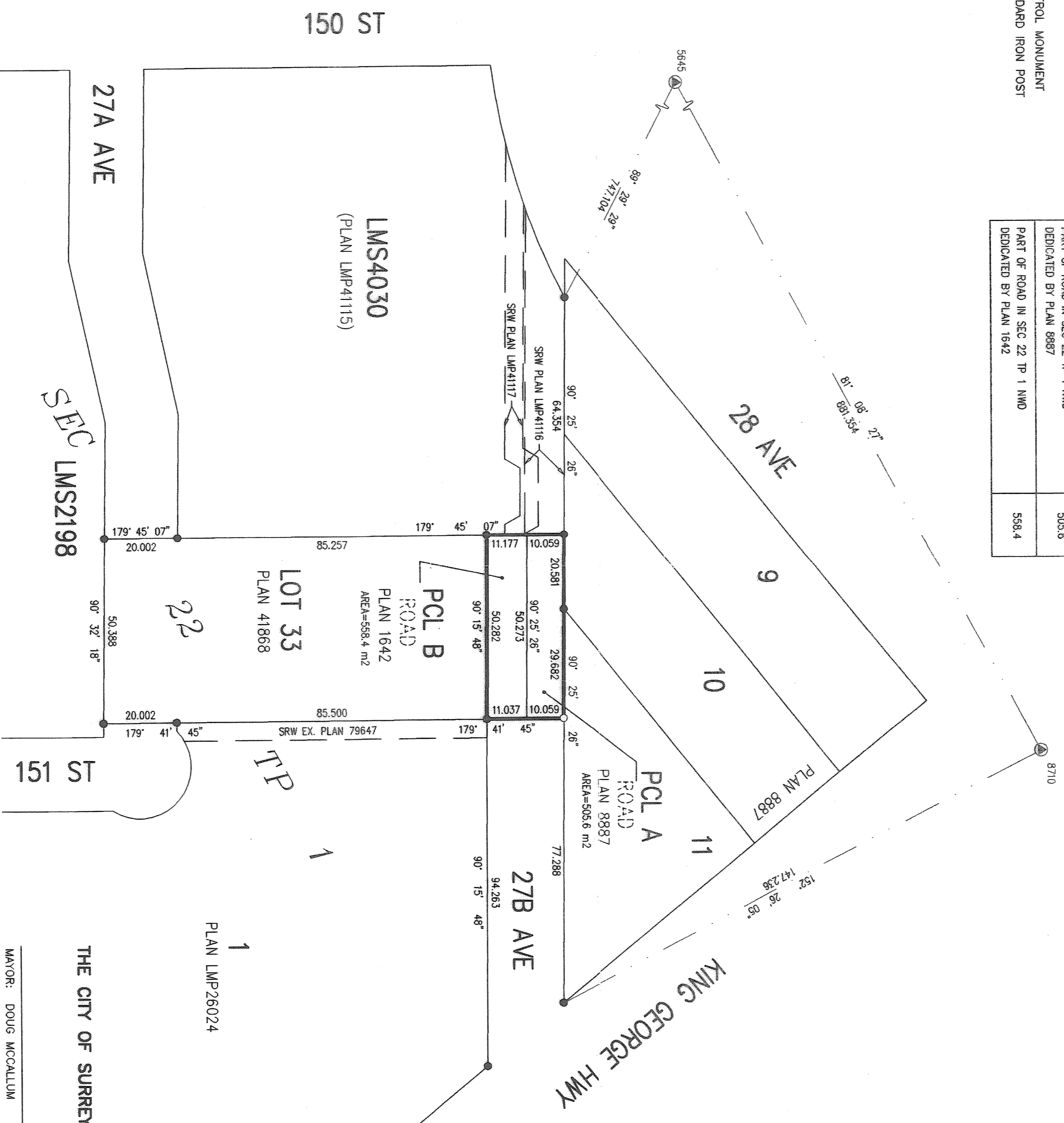
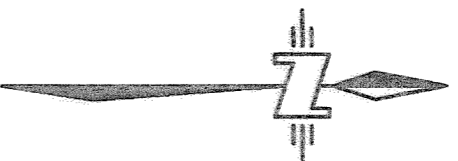
INTEGRATED SURVEY AREA No. 1. (MUNICIPALITY OF SURREY, MAD83 (CSRS))

THIS PLAN SHOWS HORIZONTAL GROUND-LEVEL DISTANCES EXCEPT WHERE OTHERWISE NOTED. TO COMPUTE GRID DISTANCES, MULTIPLY GROUND-LEVEL DISTANCES BY COMBINED FACTOR 0.99995963. GRID BEARINGS ARE DERIVED FROM OBSERVATIONS BETWEEN CONTROL MONUMENTS 8710 AND 5645

LEGEND

- SYMBOLS DESCRIPTION**
- FOUND PLACED
  - CONTROL MONUMENT
  - STANDARD IRON POST

DESCRIPTION	AREA (m <sup>2</sup> )
PART OF ROAD IN SEC 22 TP 1 NWD DEDICATED BY PLAN 8987	505.6
PART OF ROAD IN SEC 22 TP 1 NWD DEDICATED BY PLAN 1642	558.4



THE CITY OF SURREY

MAYOR: DOUG MCCALLUM

CITY CLERK: MARG JONES

WITNESS AS TO BOTH SIGNATURES  
(PRINT NAME CLEARLY NEAR SIGNATURE)

ADDRESS OF WITNESS

OCCUPATION OF WITNESS

I, G.A. HOL, A BRITISH COLUMBIA LAND SURVEYOR OF SURREY, IN BRITISH COLUMBIA, CERTIFY THAT I WAS PRESENT AT AND PERSONALLY SUPERINTENDED THE SURVEY REPRESENTED BY THIS PLAN, AND THAT THE SURVEY AND PLAN ARE CORRECT. THE FIELD SURVEY WAS COMPLETED ON THE 15th DAY OF JANUARY, 2005. THE PLAN WAS COMPLETED AND CHECKED, AND THE CHECKLIST FILED UNDER ECP#264110, ON THE 15TH DAY OF JANUARY, 2005.

*G. Hol*

THIS PLAN LIES WITHIN THE GREATER VANCOUVER REGIONAL DISTRICT - CITY OF SURREY

McELHANNAY ASSOCIATES  
PROFESSIONAL LAND SURVEYORS  
13160 88th AVENUE  
SURREY, BC V3W 3K3  
TEL: 604-596-0391  
FILE: 2112-07073-02