

CITY OF SURREY

BY-LAW NO. 15615

A by-law to close and to remove the dedication of a highway of a portion of Road bounded by 24th Avenue to the South, 128th Street to the West, 26th Avenue to the North, and 132nd Street to the East

.....

WHEREAS pursuant to Subsection 40(1)(a) of the *Community Charter*, S.B.C. 2003, c. 26, the Council may, by by-law, close all or part of a highway that is vested in the municipality to all or some types of traffic;

AND WHEREAS pursuant to Section 40(2) of the *Community Charter*, S.B.C. 2003, c. 26, the Council may, by by-law, remove the dedication of a highway that has been closed by a by-law under Subsection 40(1)(a).

NOW THEREFORE the Council of the City of Surrey in open meeting assembled, ENACTS as follows:

1. That portion of road lying in South West Quarter Section 20 Township 1 New Westminster District, shown outlined in heavy black line on a Reference Plan attached hereto, and forming part of this by-law, duly signed by the Mayor and Clerk, prepared by Montgomery C. Brisson, B.C.L.S. on the 6<sup>th</sup> day of December, 2004, and more particularly described as follows:

That portion of road dedicated by Plan 11976, called Parcel A and containing 2.30 hectares

(hereinafter referred to as that portion of 25 Avenue, 26 Avenue, 130 Street and 131 Street)

shall be closed to traffic.

2. The dedication as highway be removed of said portion of 25 Avenue, 26 Avenue, 130 Street and 131 Street.
3. This By-law may be cited for all purposes as "Surrey Close and Remove the Dedication of a Highway of a Portion of Road Bounded by 24th Avenue to the South, 128th Street to the West, 26th Avenue to the North, and 132nd Street to the East (Crescent Park) By-law, 2005, No. 15615."

READ A FIRST, SECOND AND THIRD TIME on the 10<sup>th</sup> day of January, 2005.

NOTICE OF INTENTION

ADVERTISED on the 15<sup>th</sup> and 16<sup>th</sup> day of January and on the 22<sup>nd</sup> and 23<sup>rd</sup> day of January, 2005, in the SURREY LEADER/PEACE ARCH Community newspaper.

RECONSIDERED AND FINALLY ADOPTED, signed by the Mayor and Clerk, and sealed with the Corporate Seal on the 24th day of January, 2005.

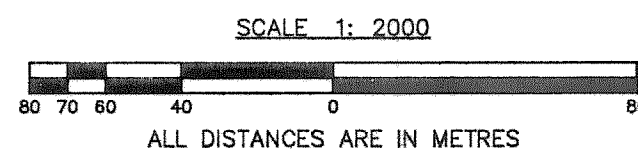
\_\_\_\_\_ MAYOR

\_\_\_\_\_ CLERK

h:\by-laws\adopted\2005\clk15615.blw.doc

LEGEND

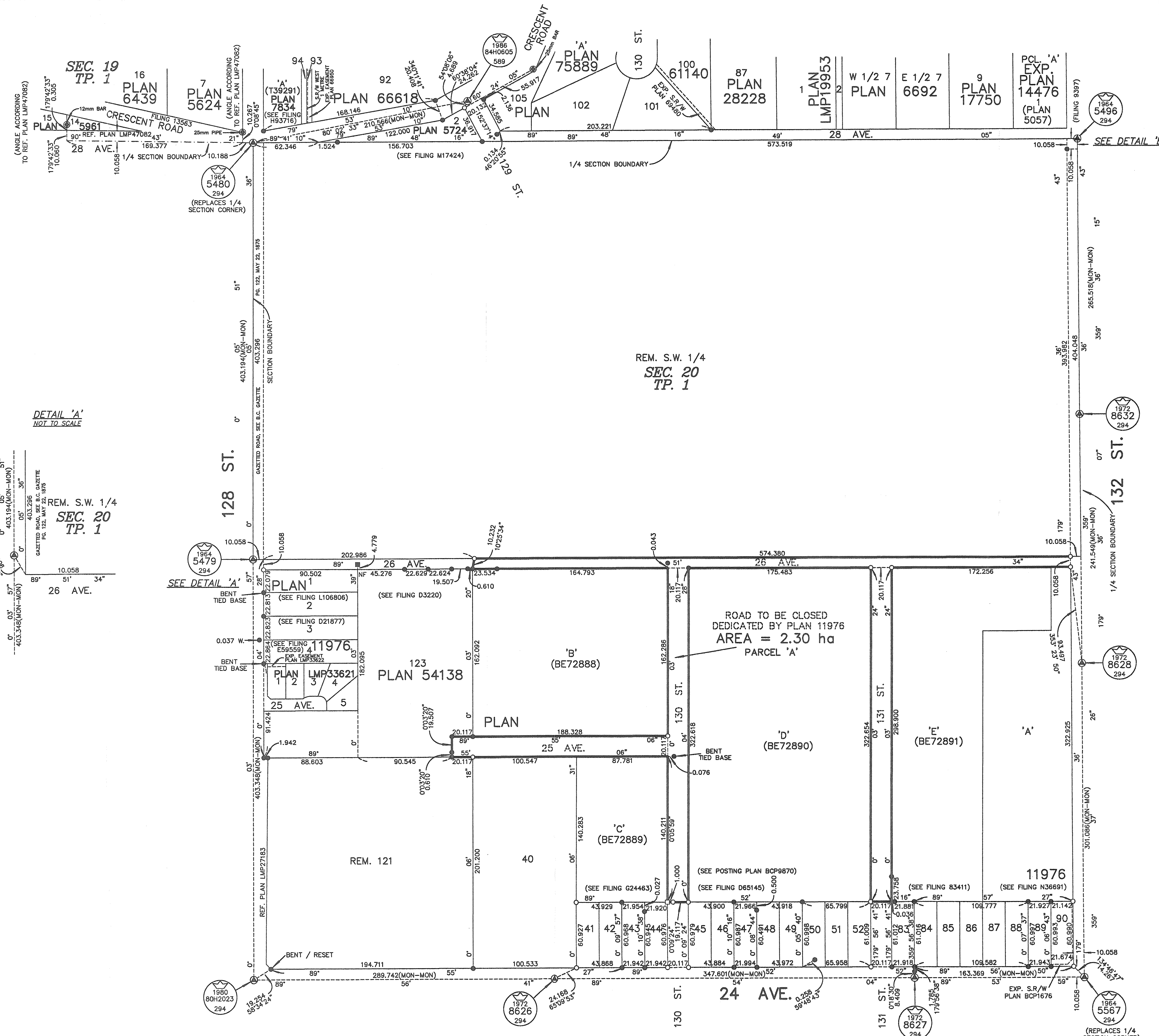
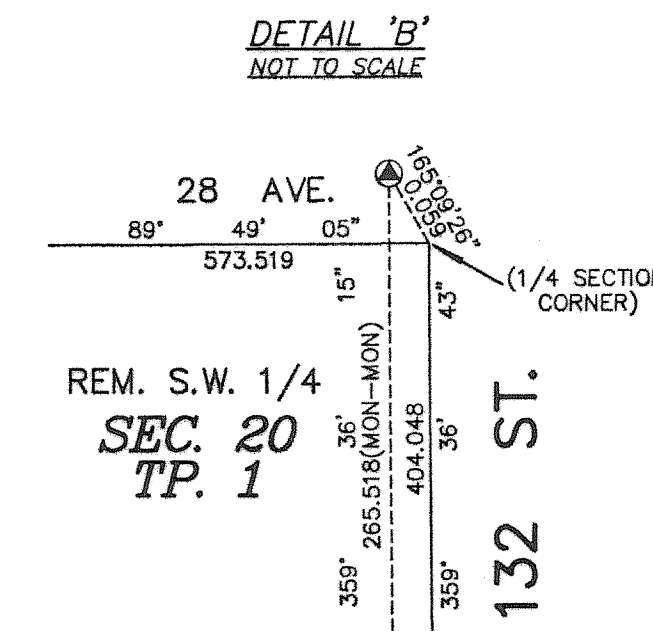
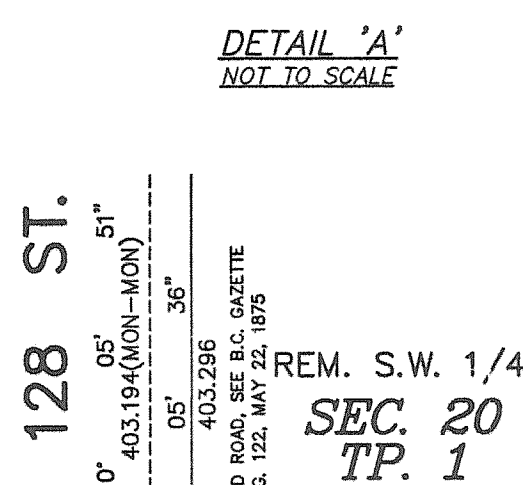
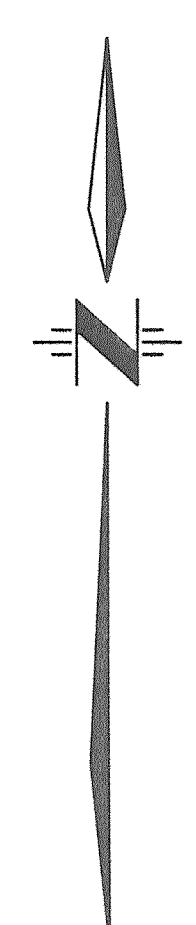
- DENOTES CONTROL MONUMENT FOUND
- DENOTES STANDARD IRON POST FOUND
- DENOTES LEAD PLUG FOUND
- DENOTES LEAD PLUG SET
- DENOTES STANDARD IRON POST SET
- DENOTES NON-STANDARD IRON POST FOUND
- NF DENOTES NO EVIDENCE FOUND



INTEGRATED SURVEY AREA NO. 1, SURREY, NAD83 (CSRS)

GRID BEARINGS ARE DERIVED FROM OBSERVATIONS BETWEEN GEODETIC CONTROL MONUMENTS 5479, 5480, 5496, 5567, 8626, 8627, 8628, 8632, 80H2023 AND 84H0605.

THIS PLAN SHOWS HORIZONTAL GROUND-LEVEL DISTANCES EXCEPT WHERE OTHERWISE NOTED. TO COMPUTE GRID DISTANCES, MULTIPLY GROUND LEVEL DISTANCES BY COMBINED FACTOR 0.9995935.



CITY OF SURREY  
 MAYOR: DOUGLAS McCALLUM  
 CITY CLERK:  
 WITNESS AS TO THE SIGNATURE OF THE CITY CLERK  
 ADDRESS OF WITNESS  
 OCCUPATION OF WITNESS

THIS PLAN LIES WITHIN THE GREATER VANCOUVER REGIONAL DISTRICT

I, MONTGOMERY C. BRISSON, A BRITISH COLUMBIA LAND SURVEYOR, OF MISSION, IN BRITISH COLUMBIA, CERTIFY THAT I WAS PRESENT AT AND PERSONALLY SUPERINTENDED THE SURVEY REPRESENTED BY THIS PLAN, AND THAT THE SURVEY AND PLAN ARE CORRECT. THE FIELD SURVEY WAS COMPLETED ON THE 2nd DAY OF DECEMBER, 2004. THE PLAN WAS COMPLETED AND CHECKED, AND THE CHECKLIST FILED UNDER ECP# 24622, ON THE 2nd DAY OF DECEMBER, 2004.

*[Signature]*