

CITY OF SURREY

BY-LAW NO. 15614

A By-law to close and to remove the dedication
of a highway of a portion of King George Highway.
.....

WHEREAS pursuant to Subsection 40(1)(a) of the *Community Charter*, S.B.C. 2003, c. 26, the Council may, by by-law, close all or part of a highway that is vested in the municipality to all or some types of traffic;

AND WHEREAS pursuant to Section 40(2) of the *Community Charter*, S.B.C. 2003, c. 26, the Council may, by by-law, remove the dedication of a highway that has been closed by a by-law under Subsection 40(1)(a).

NOW THEREFORE the Council of the City of Surrey in open meeting assembled, ENACTS as follows:

1. That portion of road lying in Section 22 Township 1 New Westminster District, shown outlined in heavy black line on a Reference Plan attached hereto, and forming part of this by-law, duly signed by the Mayor and Clerk, prepared by L. Achtemichuk, B.C.L.S. on the 4th day of December, 2004, called Parcel A, and more particularly described as follows:

That portion of road dedicated on Plan 5388, and containing
477.9 square metres,

(hereinafter referred to as that portion of King George Highway)

shall be closed to traffic.

2. The dedication as highway be removed of said portion of King George Highway.
3. This By-law may be cited for all purposes as "Surrey Close and Remove the Dedication of Highway of a Portion of King George Highway By-law, 2005, No. 15614".

READ A FIRST, SECOND AND THIRD TIME on the 10th day of January, 2005.

NOTICE OF INTENTION

ADVERTISED on the 15th and 16th day of January and on the 22nd and 23rd day of January, 2005, in the SURREY LEADER/PEACE ARCH Community newspaper.

RECONSIDERED AND FINALLY ADOPTED, signed by the Mayor and Clerk, and sealed with the Corporate Seal on the 24th day of January, 2005.

_____ MAYOR

_____ CLERK

h:\by-laws\adopted\2005\clk15614.blw.doc

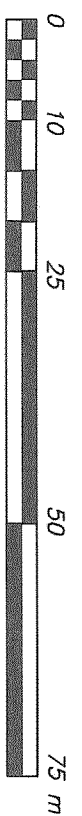
Reference Plan to Accompany the City of Surrey Highway Dedication
Cancellation By-Law No. 15614 Covering Road Shown on Plan 5388
Section 22 Tp 1 NWD

Plan BCP - - - -

Pursuant to Section 120 of the Land Title Act & Section 40 Community Charter

B.C.G.S. 92G.017

SCALE 1 : 750



Integrated Survey Area No. 1, Surrey, NAD83 (CSRS)

This Plan Shows Horizontal Ground Level Distances Except Where
Otherwise Noted. To Compute Grid Distances, Multiply Ground Level
Distances By Combined Factor 0.9995963

LEGEND:

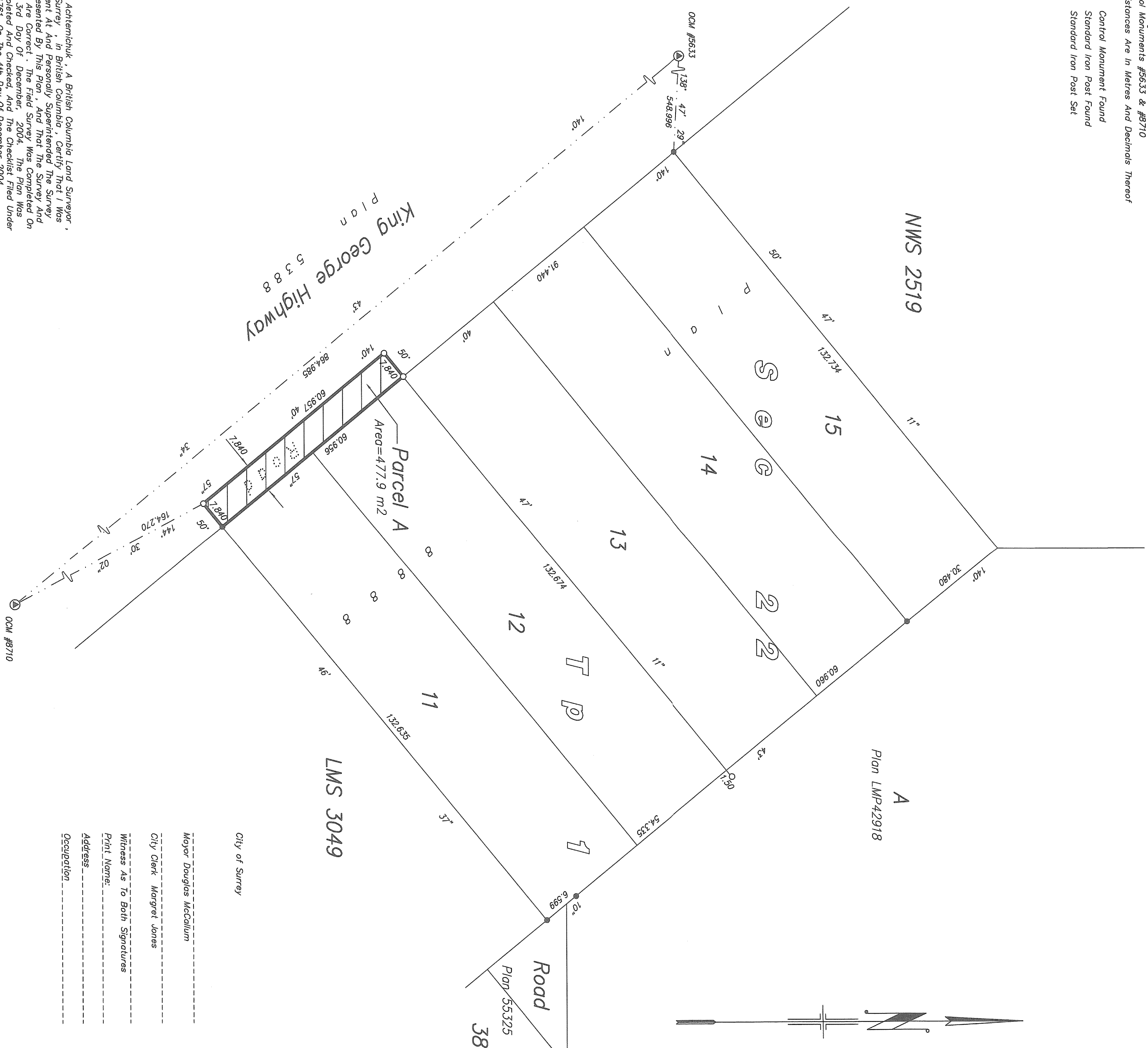
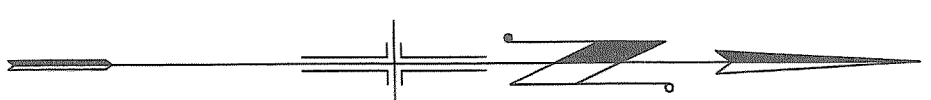
Grid Bearings Are Derived From Observations Between
Control Monuments #5633 & #8710
All Distances Are In Metres And Decimals Thereof

- Control Monument Found
- Standard Iron Post Found
- Standard Iron Post Set

Deposited in The Land Title Office
At New Westminster, B.C.
This Day Of _____

Registrar

Ref. No. _____



King George Highway
Plan 5388

LMS 3049

City of Surrey
Mayor Douglas McCallum
City Clerk Margaret Jones
Witness As To Both Signatures
Print Name:
Address:
Occupation:

I, L. Achtemichuk, A British Columbia Land Surveyor,
Of Surrey, in British Columbia, Certify That I Was
Present At And Personally Superintended The Survey
Represented By This Plan, And That The Survey And
Plan Are Correct. The Field Survey Was Completed On
The 3rd Day Of December, 2004. The Plan Was
Completed And Checked, And The Checklist Filed Under
24781, On The 4th Day Of December 2004.

B.C.L.S. [Signature]

This Plan Lies Within The Greater Vancouver Regional District

Terra Pacific Land Surveying Ltd

Suite 119 - 19292 - 80th Avenue, Surrey, BC

Tel: 604-533-0954

File: 04-044R0AD