

CITY OF SURREY

BY-LAW NO. 15505

A By-law to close and to remove the dedication
of a highway of a portion of King George Highway.
.....

WHEREAS pursuant to Subsection 40(1)(a) of the *Community Charter*, S.B.C. 2003, c. 26, the Council may, by by-law, close all or part of a highway that is vested in the municipality to all or some types of traffic;

AND WHEREAS pursuant to Section 40(2) of the *Community Charter*, S.B.C. 2003, c. 26, the Council may, by by-law, remove the dedication of a highway that has been closed by a by-law under Subsection 40(1)(a).

NOW THEREFORE the Council of the City of Surrey in open meeting assembled, ENACTS as follows:

1. That portion of road lying in Section 14 Township 1 New Westminster District, shown outlined in heavy bold outline and hatched on a Reference Plan attached hereto and forming part of this by-law, duly signed by the Mayor and Clerk, certified correct by J.G. Cameron, B.C.L.S. on the 3rd day of September, 2004, and more particularly described as follows:

That portion of road dedicated by Plan 5388, containing 360.3 square metres and called Parcel "A",

(hereinafter referred to as that portion of King George Highway)

shall be closed to traffic.

2. The dedication as highway be removed of said portion of King George Highway.
3. This By-law may be cited for all purposes as "Surrey Close and Remove the Dedication of Highway of a Portion of King George Highway at 24th Avenue By-law, 2004, No.15505".

READ A FIRST, SECOND AND THIRD TIME on the 27th day of September, 2004.

NOTICE OF INTENTION

ADVERTISED on the 2nd and 3rd day of October and on the 9th and 10th day of October, 2004, in the SURREY LEADER/PEACE ARCH Community newspaper.

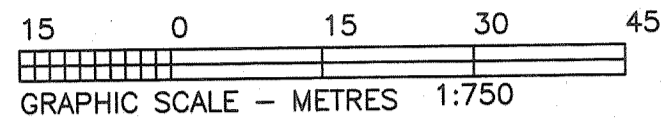
RECONSIDERED AND FINALLY ADOPTED, signed by the Mayor and Clerk, and sealed with the Corporate Seal on the 18th day of October, 2004.

_____ MAYOR

_____ CLERK

REFERENCE PLAN TO ACCOMPANY CITY OF SURREY HIGHWAY DEDICATION
 CANCELLATION BYLAW NO. 15505 COVERING ROAD SHOWN ON PLAN 5388,
 SECTION 14, TOWNSHIP 1, NEW WESTMINSTER DISTRICT

Pursuant to Section 120 of the Land Title Act & Section 40 Community Charter
 City of Surrey BCGS 92G.007



All distances are in metres

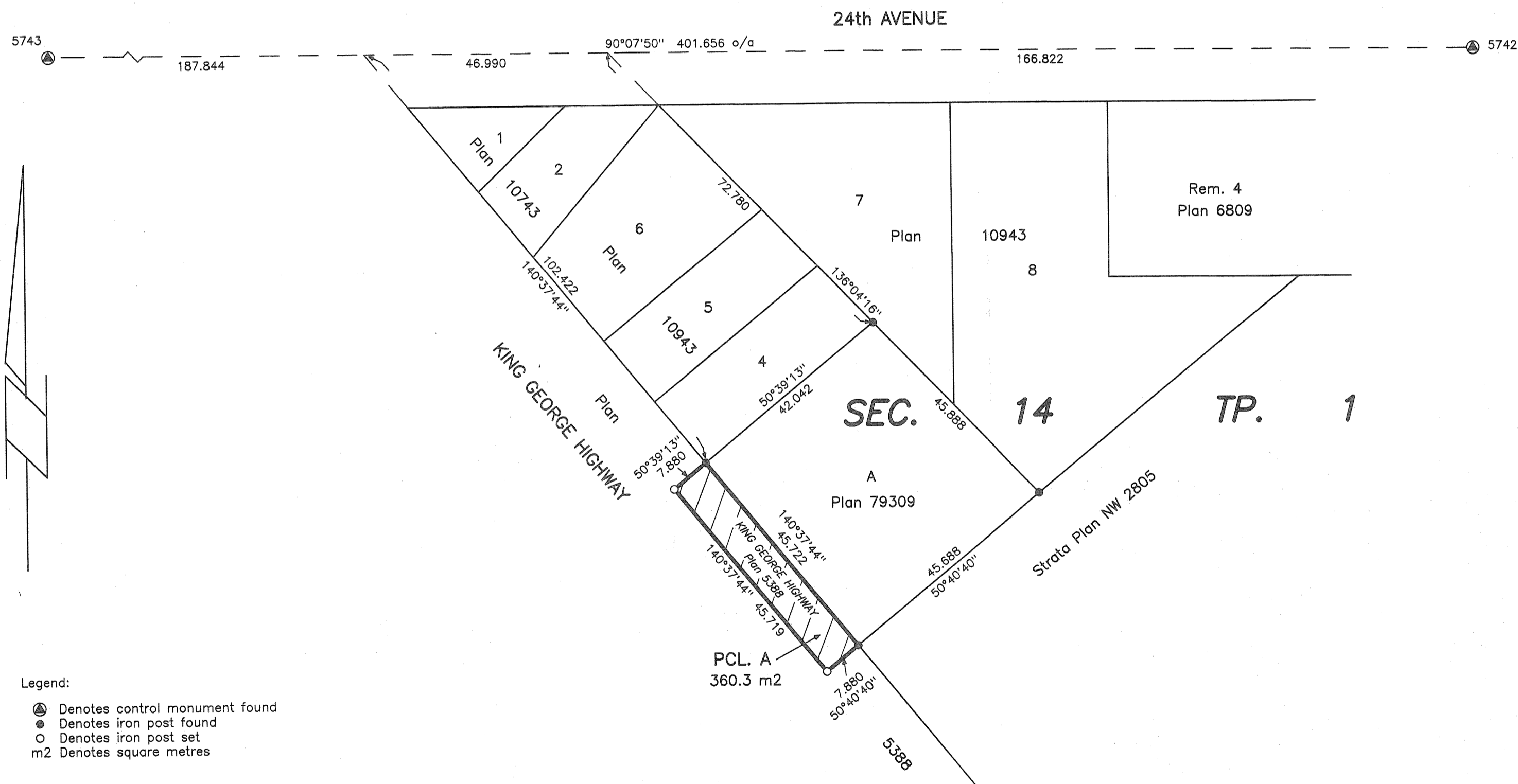
Integrated Survey Area No. 1, Surrey, B.C.
 Grid bearings are derived from observations
 between Control Monuments 5742 & 5743
 NAD 83 (CSRS)
 This Plan shows ground level measured
 distances. Prior to computation of U.T.M.
 coordinates, multiply by combined factor
 0.9995913

PLAN BCP

Deposited in the Land Title Office at
 New Westminster, B.C. this _____ day
 of _____, 2004.

Deputy Registrar

Ref. No. _____



- Legend:
- ⊙ Denotes control monument found
 - Denotes iron post found
 - Denotes iron post set
 - m2 Denotes square metres

CITY OF SURREY
Douglas McCallum
 Mayor - Douglas McCallum
Margaret Jones
 City Clerk - Margaret Jones
Susan Palmer
 Witness as to signature of the City Clerk
 14245-56 Avenue, Surrey, BC
 Address of Witness
 Assistant City Clerk
 Occupation of Witness

I, J.G. Cameron, a British Columbia Land Surveyor
 of Surrey, in British Columbia certify that I was
 present at and personally superintended the
 survey represented by this plan, and that the
 survey and plan are correct. The field survey
 was completed on the 6th day of
August, 2004. The plan was completed
 and checked, and the checklist filed under
 # 20558, on the 3rd day of September, 2004.

n Land Surveying Ltd.
 d Surveyors
 -6333-148th St.
 C. V3S 3C3
 7-3777
 -3783

This plan lies within the Greater
 Vancouver Regional District.

J.G. Cameron
 J.G. Cameron, B.C.L.S.