

CITY OF SURREY

BY-LAW NO. 15470

A By-law to close and to remove the dedication
of a highway of a portion of Road at 108 Avenue and 157A Street.

.....

WHEREAS pursuant to Subsection 40(1)(a) of the *Community Charter*, S.B.C. 2003, c. 26, the Council may, by by-law, close all or part of a highway that is vested in the municipality to all or some types of traffic;

AND WHEREAS pursuant to Section 40(2) of the *Community Charter*, S.B.C. 2003, c. 26, the Council may, by by-law, remove the dedication of a highway that has been closed by a by-law under Subsection 40(1)(a).

NOW THEREFORE the Council of the City of Surrey in open meeting assembled, ENACTS as follows:

1. That portion of road lying in Section 15 Block 5 North Range 1 West New Westminster District, shown outlined in heavy bold outline on a Reference Plan attached hereto, and forming part of this by-law, duly signed by the Mayor and Clerk, prepared by Sukh Minder Singh Dhaliwal, B.C.L.S. on the 14th day of July, 2004, and more particularly described as follows:

That portion of road dedicated by Plan BCP2821, containing
849.3 square metres and called Parcel "A":

(hereinafter referred to as that portion of Road)

shall be closed to traffic.

2. The dedication as highway be removed of said portion of Road.
3. This By-law may be cited for all purposes as "Surrey Close and Remove the Dedication of Highway of a Portion of Road at 108 Avenue and 157A Street By-law, 2004, No. 15470."

READ A FIRST, SECOND AND THIRD TIME on the 26th day of July, 2004.

NOTICE OF INTENTION

ADVERTISED on the 31st day of July and on the 1st day of August and on the 7th and 8th day of August, 2004, in the SURREY LEADER/PEACE ARCH Community newspaper.

RECONSIDERED AND FINALLY ADOPTED, signed by the Mayor and Clerk, and sealed with the Corporate Seal on the 7th day of September, 2004.

_____ MAYOR

_____ CLERK

REFERENCE PLAN TO ACCOMPANY THE CITY OF SURREY HIGHWAY DEDICATION
 CANCELLATION BYLAW NO. 15470 COVERING ROAD SHOWN ON PLAN BCP2821
 SECTION 15 BLOCK 5 NORTH RANGE 1 WEST NEW WESTMINSTER DISTRICT

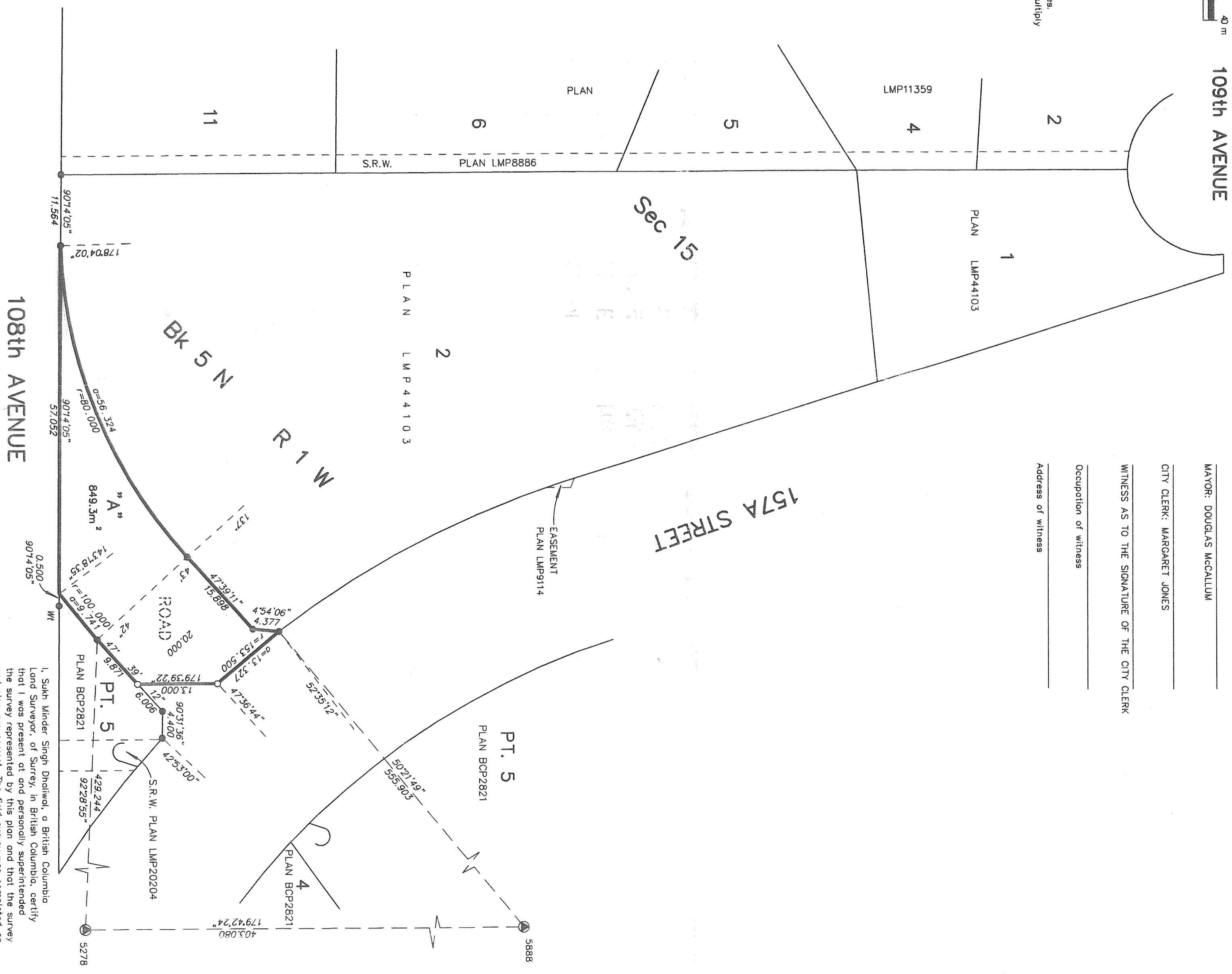
PURSUANT TO SECTION 120 OF THE LAND TITLE ACT AND
 SECTION 40 OF THE COMMUNITY CHARTER ACT

B.C.G.S. 92G.027
 CITY OF SURREY

LEGEND

- SCALE : 1:500
- (ALL DIMENSIONS ARE IN METRES)
- Grid bearings are derived from observations between control monuments 5278 and 5888, Integrated Survey Area No.1, Surrey B.C., NAD83 (CSRS).
- Indicates control monument found
 - Indicates from post found
 - Indicates iron post placed

This plan shows ground-level measured distances. Prior to computation of U.T.M. co-ordinates, multiply by overage combined factor 0.9999375



CITY OF SURREY

MAYOR: DOUGLAS MCCALLUM

CITY CLERK: MARGARET JONES

WITNESS AS TO THE SIGNATURE OF THE CITY CLERK

Occupation of witness

Address of witness

PLAN BCP

REF No. _____

Deposited in the Land Title Office of
 New Westminster, B.C.
 This ____ day of _____ 2004

Assistant Deputy Registrar

DHALIWAL & ASSOCIATES
 LAND SURVEYING INC.
 121-13140 80th Avenue
 Surrey, B.C.
 V3W 3B2
 (ph) 501-6188
 (fx) 501-6189
 FILE: 0312005-RD1.FLX

This Plan lies within the Greater Vancouver Regional District.

I, Sukh Minder Singh Dhaliwal, a British Columbia Land Surveyor, of Surrey, in British Columbia, certify that I was present at and personally supervised the survey represented by this plan and that the survey and plan are correct. The field survey was completed on the 14th day of July, 2004. The plan was completed and checked, and the checklist filed under ECP # 18088, on the 14th day of July, 2004.

[Signature]

B.C.L.S. 756