

CITY OF SURREY

BY-LAW NO. 15469

A By-law to close and to remove the dedication  
of a highway of a portion of Lane at 88 Avenue and 160 Street.

.....

WHEREAS pursuant to Subsection 40(1)(a) of the *Community Charter*, S.B.C. 2003, c. 26, the Council may, by by-law, close all or part of a highway that is vested in the municipality to all or some types of traffic;

AND WHEREAS pursuant to Section 40(2) of the *Community Charter*, S.B.C. 2003, c. 26, the Council may, by by-law, remove the dedication of a highway that has been closed by a by-law under Subsection 40(1)(a).

NOW THEREFORE the Council of the City of Surrey in open meeting assembled, ENACTS as follows:

1. That portion of lane lying in Section 26 Township 2 New Westminster District, shown outlined in bold on a Reference Plan attached hereto, and forming part of this by-law, duly signed by the Mayor and Clerk, prepared by Edmund T. Wong, B.C.L.S. on the 29th day of March, 2004, and more particularly described as follows:

That portion of lane dedicated by Plan LMP14051, containing  
298.3 square metres and called Parcel "A":

(hereinafter referred to as that portion of Lane)

shall be closed to traffic.

2. The dedication as highway be removed of said portion of Lane.
3. This By-law may be cited for all purposes as "Surrey Close and Remove the Dedication of Highway of a Portion of Lane at 88 Avenue and 160 Street By-law, 2004, No. 15469."

READ A FIRST, SECOND AND THIRD TIME on the 26th day of July, 2004.

NOTICE OF INTENTION

ADVERTISED on the 31st day of July and on the 1st day of August and on the 7th and 8th day of August, 2004, in the SURREY LEADER/PEACE ARCH Community newspaper.

RECONSIDERED AND FINALLY ADOPTED, signed by the Mayor and Clerk, and sealed with the Corporate Seal on the 1st day of November, 2004.

\_\_\_\_\_ MAYOR

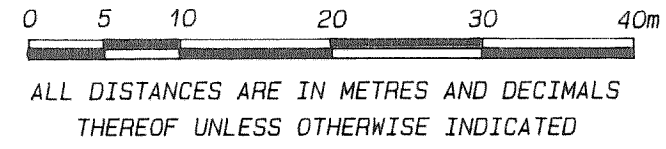
\_\_\_\_\_ CLERK

h:\by-laws\adopted\2004\clk15469.blw.doc

REFERENCE PLAN TO ACCOMPANY THE CITY OF SURREY BYLAW NO. 15469  
 TO REMOVE THE LANE DEDICATED BY PLAN 2824  
 OF SECTION 26, TOWNSHIP 2, NEW WESTMINSTER DISTRICT  
 PURSUANT TO SECTION 120 LAND TITLE ACT  
 B.C.G.S. 926.017

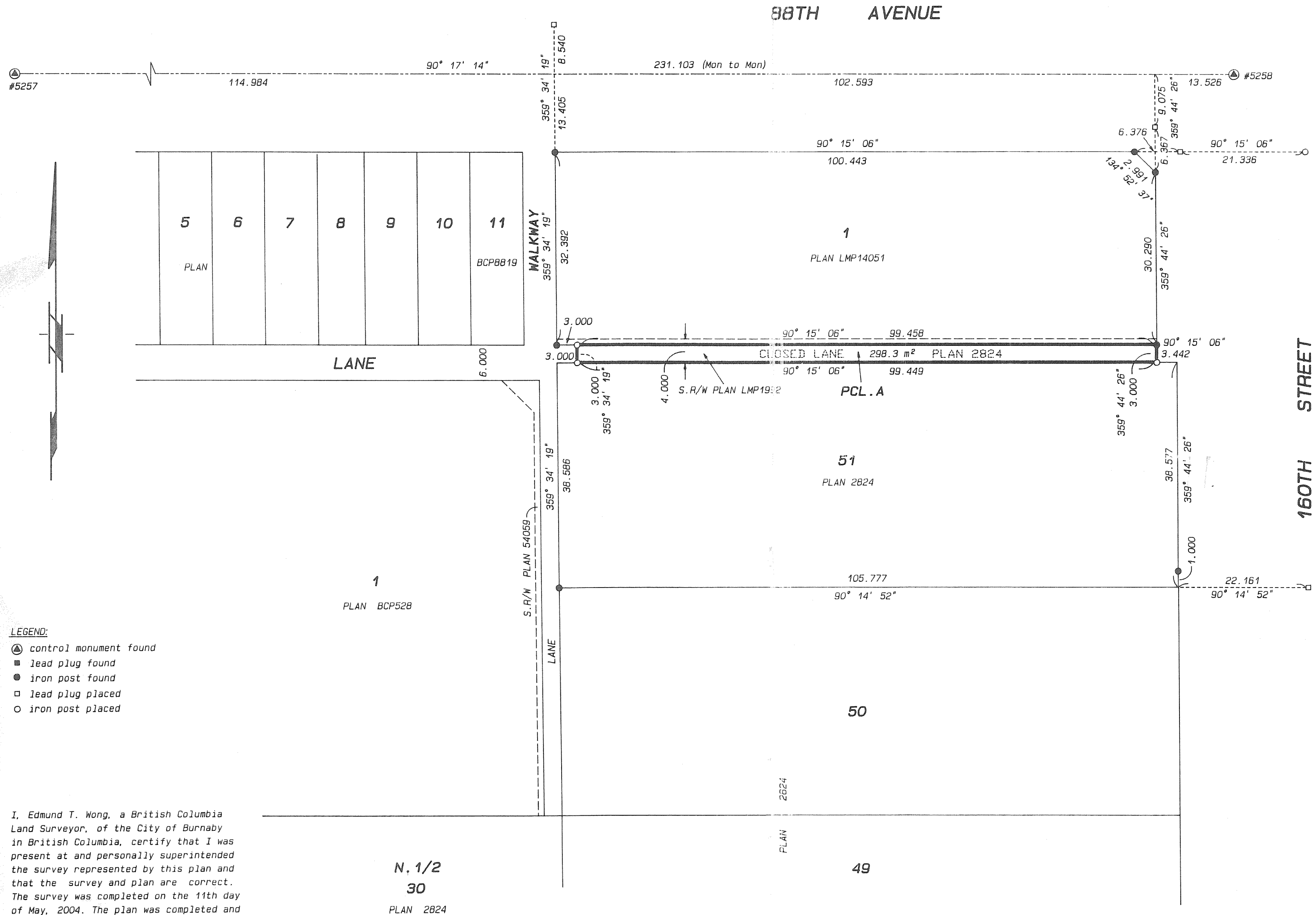
SCALE: 1: 500

PLAN BCP



Deposited in the Land Title office  
 at New Westminster, B.C. this \_\_\_\_ day  
 of \_\_\_\_\_, 2004.

Registrar



- LEGEND:**
- ▲ control monument found
  - lead plug found
  - iron post found
  - lead plug placed
  - iron post placed

I, Edmund T. Wong, a British Columbia Land Surveyor, of the City of Burnaby in British Columbia, certify that I was present at and personally superintended the survey represented by this plan and that the survey and plan are correct. The survey was completed on the 11th day of May, 2004. The plan was completed and checked, and the checklist filed under #13286, on the 29th day of March, 2004.

*Edmund T. Wong*  
 B.C.L.S.

N, 1/2  
 30  
 PLAN 2824

CITY OF SURREY

Authorized Signatory  
 (Sign and Print name)

Authorized Signatory  
 (Sign and Print name)

Witness as to signature(s)  
 (Sign and Print name)

Address of \_\_\_\_\_  
 Witness: \_\_\_\_\_

Occupation of \_\_\_\_\_  
 Witness: \_\_\_\_\_

Ken K. Wong and Associates  
 Canada and B.C. Land Surveyors  
 5624 E. Hastings Street  
 Burnaby, B.C. V5B 1R4  
 Telephone: 294-8881  
 Fax: 294-0625  
 020787 FB759 P96-98  
 Data File: 020787P.raw  
 File: 020787P R4440  
 FB777 P79 SU1495B, SI4106B  
 File: 020787A  
 Drawn by: WP

Grid bearings are derived from observations between Control Monuments #5257 and #5258. Integrated Survey Area No.1(City of Surrey) This plan shows ground level measured distances. Prior to computation of U.T.M. co-ordinates multiply by combined factor of 0.99959335. Datum: NAD83 (CSRS)

This plan lies within the Greater Vancouver Regional District.

FILE: SU-1496B