

CITY OF SURREY

BY-LAW NO. 15468

A By-law to close and to remove the dedication  
of a highway of a portion of King George Highway at 152 Street.

.....

WHEREAS pursuant to Subsection 40(1)(a) of the *Community Charter*, S.B.C. 2003, c. 26, the Council may, by by-law, close all or part of a highway that is vested in the municipality to all or some types of traffic;

AND WHEREAS pursuant to Section 40(2) of the *Community Charter*, S.B.C. 2003, c. 26, the Council may, by by-law, remove the dedication of a highway that has been closed by a by-law under Subsection 40(1)(a).

NOW THEREFORE the Council of the City of Surrey in open meeting assembled, ENACTS as follows:

1. That portion of road lying in Section 23 Township 1 New Westminster District, shown outlined in bold on a Reference Plan attached hereto, and forming part of this by-law, duly signed by the Mayor and Clerk, prepared by H. David Liddle, B.C.L.S. on the 26th day of May, 2004, and more particularly described as follows:

That portion of road dedicated by Plan 5388, containing  
376 square metres and called Parcel A:

(hereinafter referred to as that portion of King George Highway)

shall be closed to traffic.

2. The dedication as highway be removed of said portion of King George Highway.
3. "Portion of King George Highway at 152 Street Road Exchange By-law, 2003, No. 15246" is hereby repealed.
4. This By-law may be cited for all purposes as "Surrey Close and Remove the Dedication of Highway of a Portion of King George Highway at 152 Street By-law, 2004, No. 15468".

READ A FIRST, SECOND AND THIRD TIME on the 26th day of July, 2004.

NOTICE OF INTENTION

ADVERTISED on the 31st day of July and on the 1st day of August and on the 7th and 8th day of August, 2004, in the SURREY LEADER/PEACE ARCH Community newspaper.

RECONSIDERED AND FINALLY ADOPTED, signed by the Mayor and Clerk, and sealed with the Corporate Seal on the 7th day of September, 2004.

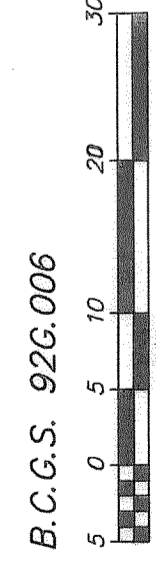
\_\_\_\_\_ MAYOR

\_\_\_\_\_ CLERK

h:\by-laws\adopted\2004\clk15468.blw.doc

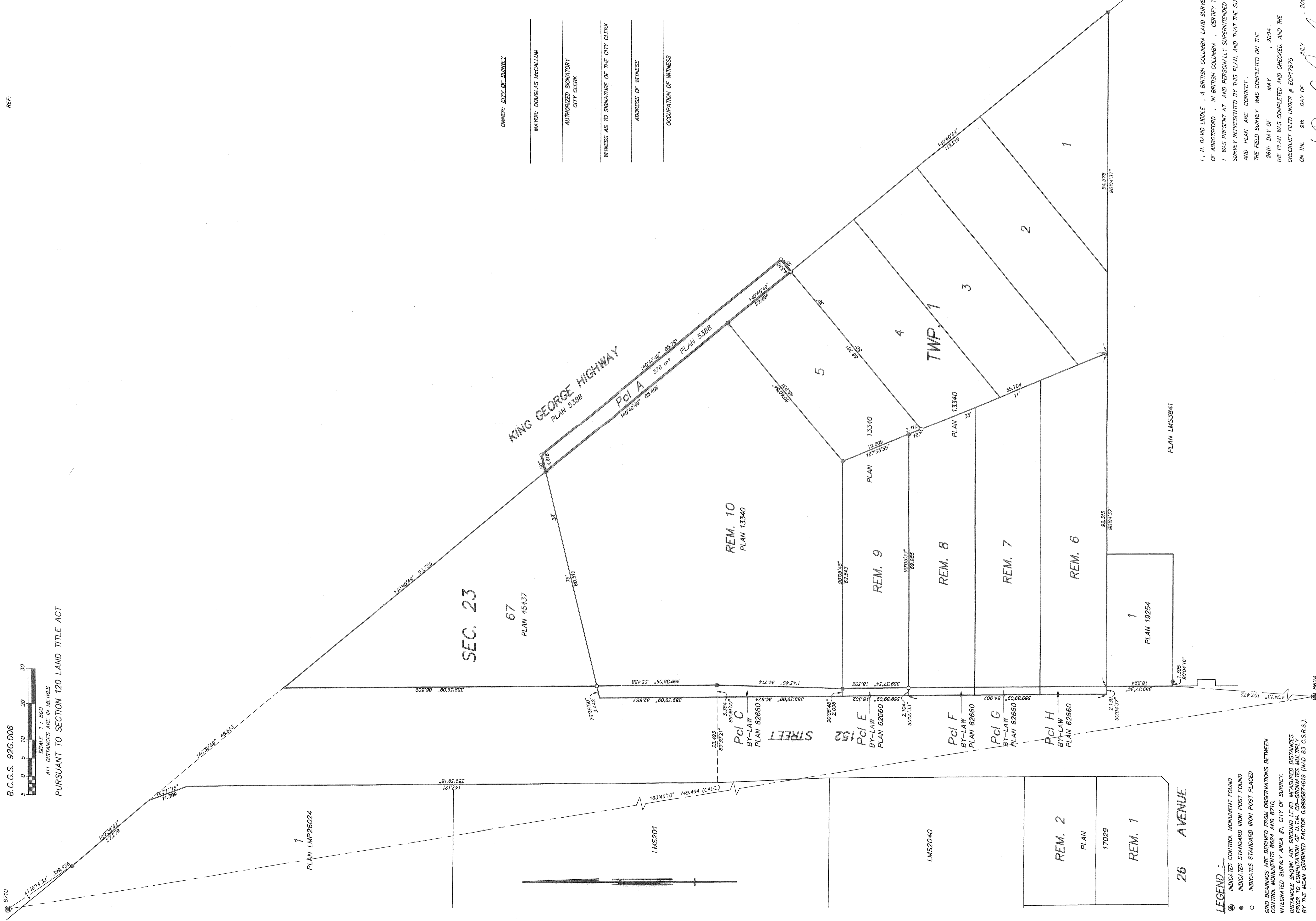
REFERENCE PLAN TO ACCOMPANY CITY OF SURREY  
 HIGHWAY DEDICATION CANCELLATION BYLAW 15468  
 OF A PORTION OF  
 SECTION 23, TOWNSHIP 1,  
 NEW WESTMINSTER DISTRICT  
 SHOWN ROAD PLAN 5388

B.C.C.S. 92G.006  
 SCALE 1 : 500  
 ALL DISTANCES ARE IN METRES  
 PURSUANT TO SECTION 120 LAND TITLE ACT



**PLAN BCP**  
 DEPOSITED IN THE LAND TITLE OFFICE  
 AT NEW WESTMINSTER, B.C.  
 THIS DAY OF \_\_\_\_\_, 2004.

REGISTRAR  
 REF:



OWNER: CITY OF SURREY  
 MAYOR DOUGLAS McCALLUM  
 AUTHORIZED SIGNATORY  
 CITY CLERK  
 WITNESS AS TO SIGNATURE OF THE CITY CLERK  
 ADDRESS OF WITNESS  
 OCCUPATION OF WITNESS

**LEGEND:**  
 ● INDICATES CONTROL MONUMENT FOUND  
 ○ INDICATES STANDARD IRON POST FOUND  
 ○ INDICATES STANDARD IRON POST PLACED  
 ○ OUR BEARINGS ARE DERIVED FROM OBSERVATIONS BETWEEN CONTROL MONUMENTS 8824 AND 8716  
 INTEGRATED SURVEY AREA #1, CITY OF SURREY  
 DISTANCES SHOWN ARE GROUND LEVEL MEASURED DISTANCES.  
 DISTANCES SHOWN WITHIN PARENT PLAN ARE MEASURED BY THE MEAN COMBINED FACTOR 0.9999874019 (MAD 83 C.S.R.S.).

MURRAY & ASSOCIATES  
 201-12448 82nd AVENUE  
 SURREY, B.C.  
 V3W 3E9  
 (604) 597-9169

I, H. DAVID LIDDLE, A BRITISH COLUMBIA LAND SURVEYOR OF ABBOTSFORD, IN BRITISH COLUMBIA, CERTIFY THAT I WAS PRESENT AT AND PERSONALLY SUPERVISED THE SURVEY REPRESENTED BY THIS PLAN, AND THAT THE SURVEY AND PLAN ARE CORRECT.  
 THE FIELD SURVEY WAS COMPLETED ON THE 26th DAY OF MAY, 2004.  
 THE PLAN WAS COMPLETED AND CHECKED, AND THE CHECKLIST FILED UNDER # ECP17875 ON THE 9th DAY OF JULY, 2004.

*H. David Liddle*

THIS PLAN LIES WITHIN THE GREATER VANCOUVER REGIONAL DISTRICT  
 (CITY OF SURREY)