

CITY OF SURREY

BY-LAW NO. 15411

A By-law to close and to remove the dedication
of a highway of a portion of 152 Street at 72 Avenue.

.....

WHEREAS pursuant to Subsection 40(1)(a) of the *Community Charter*, S.B.C. 2003, c. 26, the Council may, by by-law, close all or part of a highway that is vested in the municipality to all or some types of traffic;

AND WHEREAS pursuant to Section 40(2) of the *Community Charter*, S.B.C. 2003, c. 26, the Council may, by by-law, remove the dedication of a highway that has been closed by a by-law under Subsection 40(1)(a).

NOW THEREFORE the Council of the City of Surrey in open meeting assembled, ENACTS as follows:

1. That portion of road lying in Section 15 Township 2 New Westminster District, shown hatched on a Reference Plan attached hereto, and forming part of this by-law, duly signed by the Mayor and Clerk, prepared by Grant Butler, B.C.L.S. on the 5th day of December, 2003, and more particularly described as follows:

That portion of road dedicated by Plan LMP20814, containing
54.1 square metres and called Parcel 1:

(hereinafter referred to as that portion of 152 Street)

shall be closed to traffic.

2. The dedication as highway be removed of said portion of 152 Street.
3. "Portion of 152 Street at 72 Avenue Road Exchange By-law, 2003, No. 15247" is hereby repealed.
4. This By-law may be cited for all purposes as "Surrey Close and Remove the Dedication of Highway of a Portion of 152 Street at 72 Avenue By-law, 2004, No. 15411".

READ A FIRST, SECOND AND THIRD TIME on the 5th day of July, 2004.

NOTICE OF INTENTION

ADVERTISED on the 10th and 11th day of July and on the 17th and 18th day of July, 2004, in the SURREY LEADER/PEACE ARCH Community newspaper.

RECONSIDERED AND FINALLY ADOPTED, signed by the Mayor and Clerk, and sealed with the Corporate Seal on the 19th day of July, 2004.

_____ MAYOR

_____ CLERK

h:\by-laws\adopted\2004\clk15411.blw.doc

REFERENCE PLAN TO ACCOMPANY CITY OF SURREY HIGHWAY
DEDICATION CANCELLATION BYLAW NUMBER 1541
OF PART OF ROAD DEDICATED ON PLAN LMP20814
SECTION 15 TOWNSHIP 2 N.W.D.

PLAN BCP

DEPOSITED IN THE LAND TITLE OFFICE
AT NEW WESTMINSTER, B.C.,
THIS DAY OF _____, 2004

PURSUANT TO SECTION 120 OF THE LAND TITLE ACT
B.C.G.S. 92G.016

0 10 50
SCALE 1 : 750 DISTANCES ARE METRIC

INTEGRATED SURVEY AREA NO.1 (SURREY)
NAD83(CSRS)

THIS PLAN SHOWS HORIZONTAL GROUND-LEVEL MEASURED DISTANCES
EXCEPT WHERE OTHERWISE NOTED. TO COMPUTE GRID DISTANCES, MULTIPLY
GROUND-LEVEL DISTANCES BY COMBINED FACTOR 0.9996040

LEGEND

GRID BEARINGS ARE DERIVED FROM OBSERVATIONS BETWEEN
GEODETIC CONTROL MONUMENTS 5026 AND 5027

FOUND PLACED

- ⊙ DENOTES CONTROL MONUMENT
- DENOTES LEAD PLUG
- DENOTES IRON POST
- m2 DENOTES SQUARE METRES
- Wt DENOTES WITNESS

CITY OF SURREY

MAYOR

CLERK

WITNESS AS TO BOTH SIGNATURES

Name _____

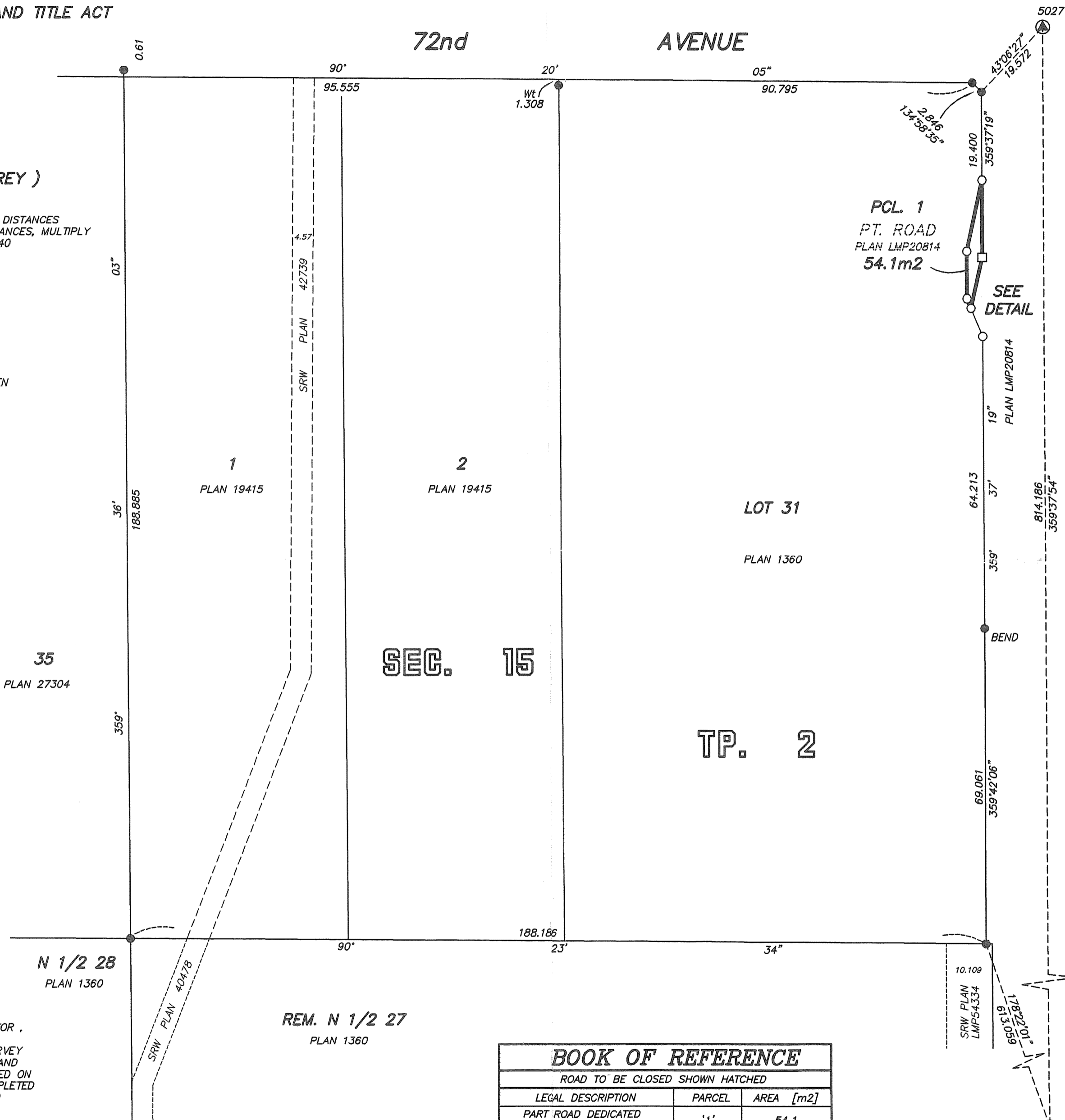
ADDRESS _____

OCCUPATION _____

I, GRANT BUTLER, A BRITISH COLUMBIA LAND SURVEYOR,
OF DELTA, BRITISH COLUMBIA, CERTIFY THAT I WAS
PRESENT AT AND PERSONALLY SUPERINTENDED THE SURVEY
REPRESENTED BY THIS PLAN, AND THAT THE SURVEY AND
PLAN ARE CORRECT. THE FIELD SURVEY WAS COMPLETED ON
THE 1st DAY OF DECEMBER, 2003. THE PLAN WAS COMPLETED
AND CHECKED, AND THE CHECKLIST FILED UNDER #9299
ON THE 5th DAY OF DECEMBER, 2003



B.C.L.S.



| BOOK OF REFERENCE | | |
|--------------------------------------|--------|-----------|
| ROAD TO BE CLOSED SHOWN HATCHED | | |
| LEGAL DESCRIPTION | PARCEL | AREA [m2] |
| PART ROAD DEDICATED BY PLAN LMP20814 | '1' | 54.1 |

THIS PLAN LIES WITHIN THE GREATER VANCOUVER REGIONAL DISTRICT

DYCK & ASSOCIATES
PROFESSIONAL LAND SURVEYORS
4 - 19089 - 94TH AVENUE
SURREY, B.C. V4N 3S4
TEL: 604-513-9611 FAX: 604-513-2202
FILE : 2257
DWG : 2257-RD1 REV.2

REGISTRAR