

CITY OF SURREY

BY-LAW NO. 15386

A By-law to close and to remove the dedication
of a highway of portions of 59 Avenue and 164 Street.

.....
WHEREAS pursuant to Subsection 40(1)(a) of the *Community Charter*, S.B.C. 2003, c. 26, the Council may, by by-law, close all or part of a highway that is vested in the municipality to all or some types of traffic;

AND WHEREAS pursuant to Section 40(2) of the *Community Charter*, S.B.C. 2003, c. 26, the Council may, by by-law, remove the dedication of a highway that has been closed by a by-law under Subsection 40(1)(a).

NOW THEREFORE the Council of the City of Surrey in open meeting assembled, ENACTS as follows:

1. Those portions of road lying in the South West Quarter, Section 12, Township 2, New Westminster District, outlined in heavy black line on a Reference Plan attached hereto, and forming part of this by-law, duly signed by the Mayor and Clerk, prepared by D.J. Dyck, B.C.L.S. on the 13th day of May, 2004, and more particularly described as follows:

That portion of road dedicated on Plan NWP87614, containing 52.8 square metres and called Parcel A,

(Portion of 59 Avenue)

That portion of road dedicated on Plan 1435, containing 0.364 hectares and called Parcel B,

(Portion of 59 Avenue)

That portion of road dedicated on Plan 1435, containing 0.325 hectares and called Parcel C,

(Portion of 164 Street)

That portion of road dedicated on Plan 1435, containing 31.8 square metres and called Parcel D,

(Portion of 164 Street)

That portion of road lying in the South East Quarter, Section 12, Township 2, New Westminster District, outlined in heavy black line on a Reference Plan attached hereto, and forming part of this by-law, duly signed by the Mayor and Clerk, prepared by D.J. Dyck, B.C.L.S. on the 13th day of May, 2004, and more particularly described as follows:

That portion of road dedicated on Plan 1752, containing 691.6 square metres and called Parcel E,

(Portion of 164 Street)

(hereinafter referred to as those portions of 59 Avenue and 164 Street)

shall be closed to traffic.

2. The dedication as highway be removed of said portions of 59 Avenue and 164 Street.
3. This By-law may be cited for all purposes as "Close and Remove the Dedication of Highway of Portions of 164 Street and 59 Avenue By-law, 2004, No. 15386."

READ A FIRST, SECOND AND THIRD TIME on the 17th day of May, 2004.

NOTICE OF INTENTION

ADVERTISED on the 22nd and 23rd day of May and on the 29th and 30th day of May, 2004, in the SURREY LEADER/PEACE ARCH Community newspaper.

RECONSIDERED AND FINALLY ADOPTED, signed by the Mayor and Clerk, and sealed with the Corporate Seal on the 7th day of June, 2004.

_____ MAYOR

_____ CLERK

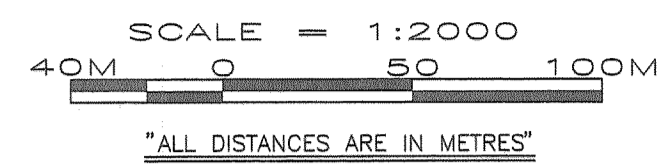
REFERENCE PLAN TO ACCOMPANY THE CITY OF SURREY HIGHWAY DEDICATION
 CANCELLATION BYLAW No. 15386 OF PART OF ROAD SHOWN ON PLAN NWP87614
 AND PLAN 1435 OF THE S.W. 1/4 SECTION 12 TOWNSHIP 2 AND
 PART OF ROAD SHOWN ON PLAN 1752 OF THE S.E. 1/4 SECTION 12 TOWNSHIP 2 N.W.D.

PLAN BCP

Deposited in the Land Title
 Office at NEW WESTMINSTER, B.C.
 This ____ day of _____, 2004

Registrar

PURSUANT TO SECTION 120 OF THE L.T.A.
 CITY OF SURREY
 B.C.G.S. 92G.017



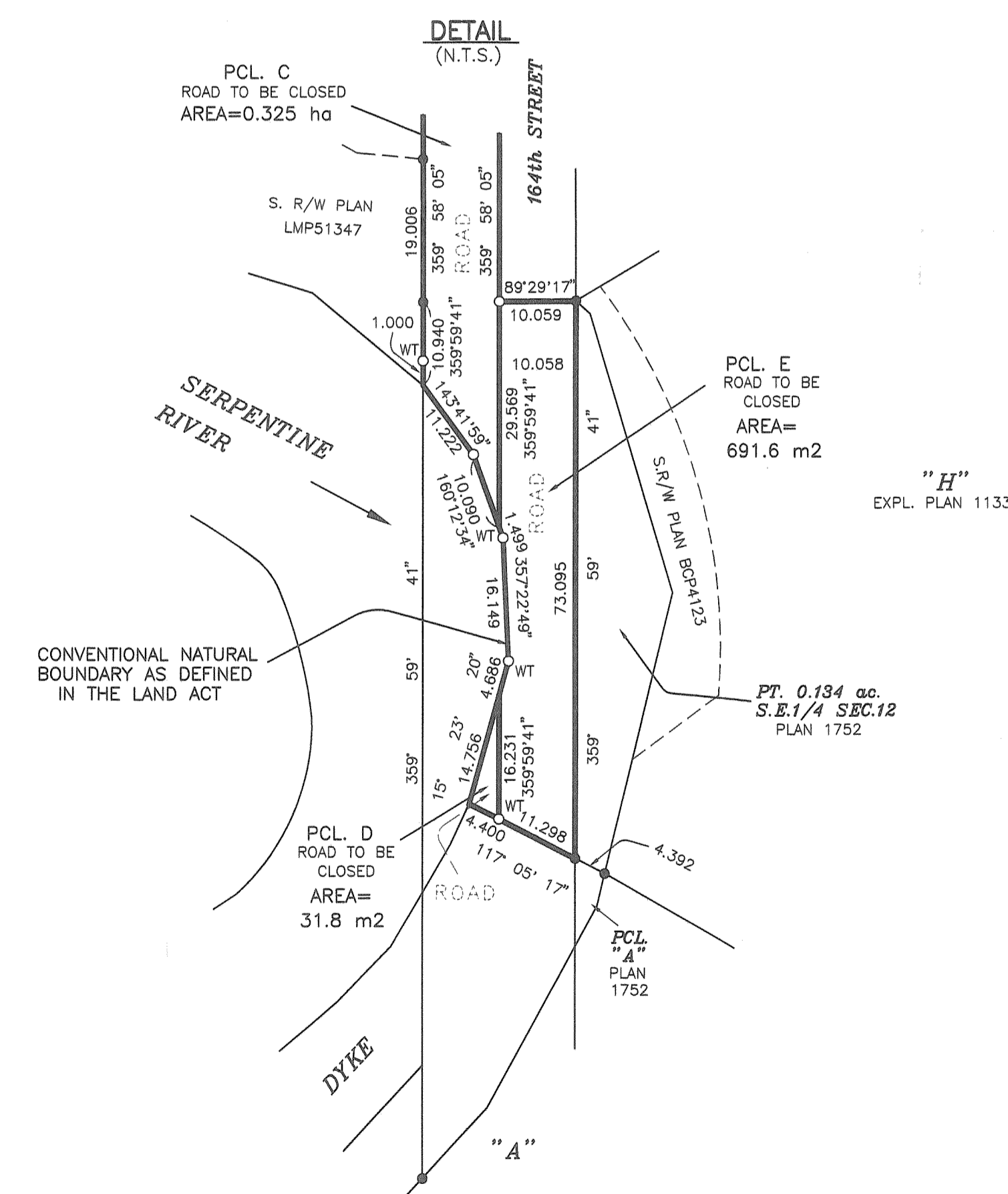
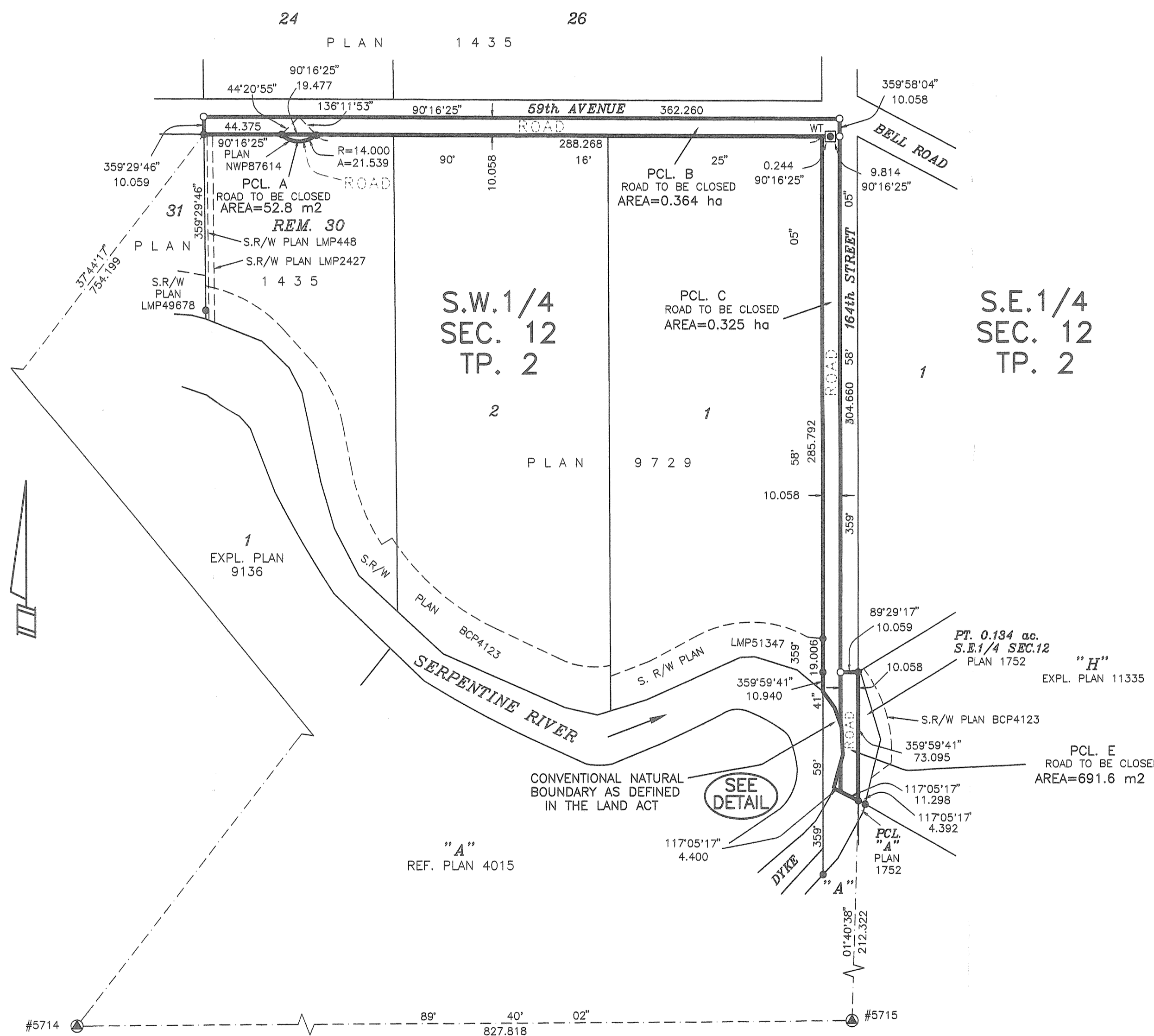
BOOK OF REFERENCE				
DESCRIPTION	PLAN	AREA		
PART 59th AVE. - S.W. 1/4 SEC. 12 TP. 2	NWP87614	52.8 m ²	PCL. A	
S. 1/2 59th AVENUE - S.W. 1/4 SEC. 12 TP. 2	1435	0.364 ha	PCL. B	
W. 1/2 164th STREET - S.W. 1/4 SEC. 12 TP. 2	1435	0.325 ha	PCL. C	
W. 1/2 164th STREET - S.W. 1/4 SEC. 12 TP. 2	1435	31.8 m ²	PCL. D	
E. 1/2 164th STREET - S.E. 1/4 SEC. 12 TP. 2	1752	691.6 m ²	PCL. E	

INTEGRATED SURVEY AREA NO. 1

City of Surrey
 Grid bearings derived from
 OCM# 5714 and OCM# 5715
 This plan shows ground level measured distances.
 Prior to computation of U.T.M. coordinates
 multiply by combined factor 0.99960625
 NAD83 CSRS

LEGEND

- standard iron post found
- standard iron post placed
- ⊠ Non Standard Round Iron Post
- ⊙ Control Monument
- WT Denotes Witness



CITY OF SURREY

Authorized Signatory
 Douglas McCallum (Mayor)

Authorized Signatory
 Margaret Jones (City Clerk)

Witness as to signature
 of the City Clerk

Address of Witness

Occupation of Witness

I, D.J. Dyck, a British Columbia Land Surveyor, of Surrey,
 in British Columbia, certify that I was present at and personally
 superintended the survey represented by this plan and that the
 survey and plan are correct. The field survey was completed on
 the 11th day of MAY, 2004
 The plan was completed and checked and the checklist filed under
 # 15199 on the 13th day of MAY, 2004

[Signature]
 SIGNATURE OF B.C.L.S.