

CITY OF SURREY

BY-LAW NO. 15316

A By-law to close and to remove the dedication
of a highway of portions of Lane at 88 Avenue and 126 Street.

.....

WHEREAS pursuant to Subsection 40(1)(a) of the *Community Charter*, S.B.C. 2003, c. 26, the Council may, by by-law, close all or part of a highway that is vested in the municipality to all or some types of traffic;

AND WHEREAS pursuant to Section 40(2) of the *Community Charter*, S.B.C. 2003, c. 26, the Council may, by by-law, remove the dedication of a highway that has been closed by a by-law under Subsection 40(1)(a).

NOW THEREFORE the Council of the City of Surrey in open meeting assembled, ENACTS as follows:

1. Those portions of road lying in Section 31 Township 2 New Westminster District, shown outlined in heavy black line on a Reference Plan attached hereto, and forming part of this by-law, duly signed by the Mayor and Clerk, prepared by H. David Liddle, B.C.L.S. on the 27th day of February, 2004, and more particularly described as follows:

That portion of road dedicated by Plan 2135, containing 747.5 square metres and called Parcel "A",

That portion of road dedicated by Plan LMP16556, containing 382.2 square metres and called Parcel "B",

(hereinafter referred to as those portions of Lane)

shall be closed to traffic.

2. The dedication as highway be removed of said portions of Lane.
3. This By-law may be cited for all purposes as "Surrey Close and Remove the Dedication of Highway of Portions of Lane at 88 Avenue and 126 Street By-law, 2004, No. 15316."

READ A FIRST, SECOND AND THIRD TIME on the 22nd day of March, 2004.

NOTICE OF INTENTION

ADVERTISED on the 27th and 28th day of March and on the 3rd and 4th day of April, 2004, in the SURREY LEADER/PEACE ARCH Community newspaper.

RECONSIDERED AND FINALLY ADOPTED, signed by the Mayor and Clerk, and sealed with the Corporate Seal on the 5th day of April, 2004.

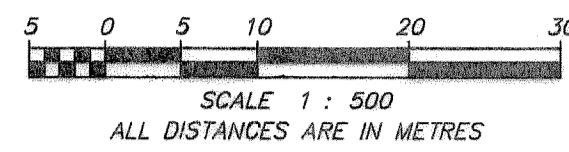
_____ MAYOR

_____ CLERK

h:\by-laws\adopted\2004\clk15316.blw.doc

REFERENCE PLAN TO ACCOMPANY
CITY OF SURREY HIGHWAY DEDICATION CANCELLATION BYLAW 15316
OF PORTIONS OF SECTION 31, TOWNSHIP 2,
SHOWN ROAD ON PLANS 2135 AND LMP16556,
NEW WESTMINSTER DISTRICT

B.C.G.S. 92G.016



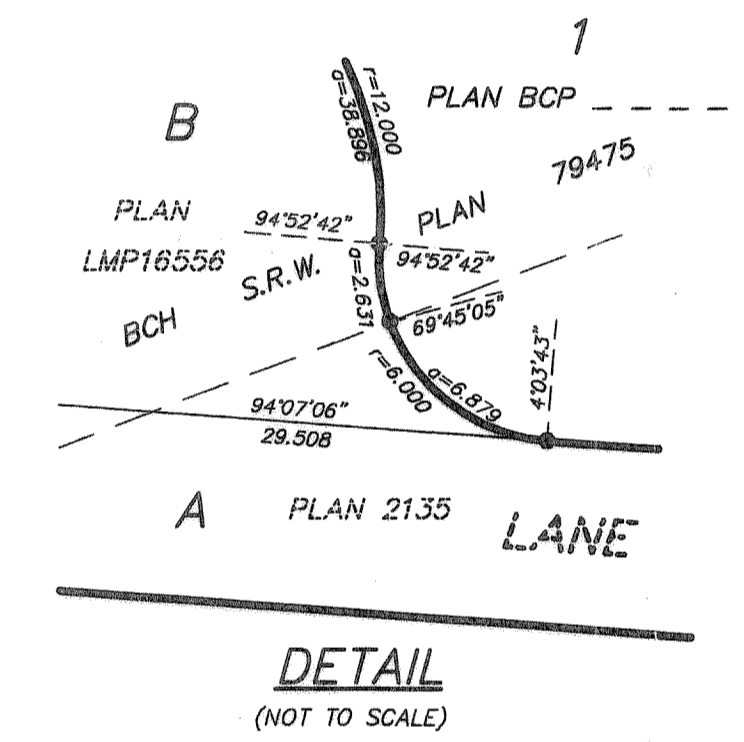
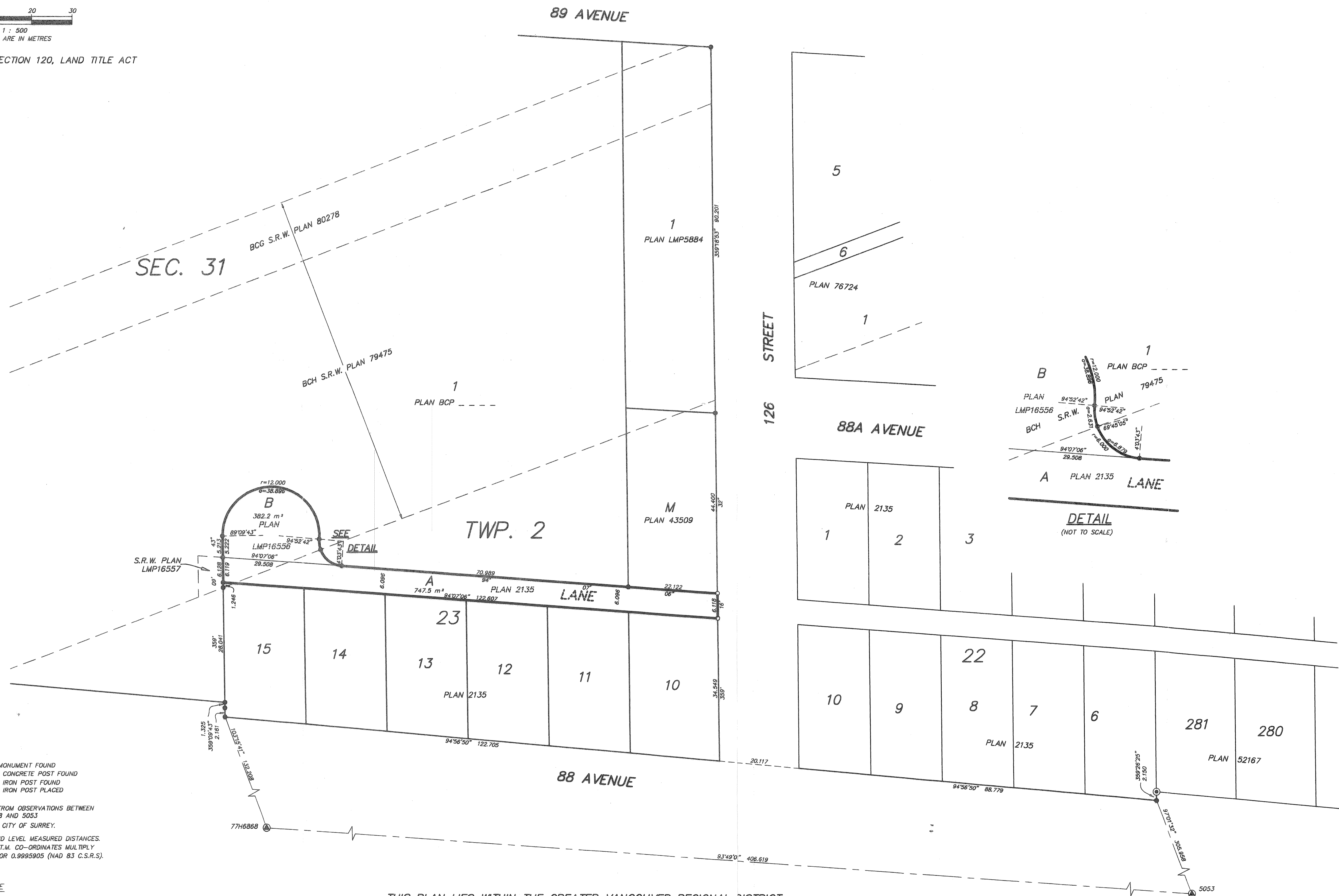
PURSUANT TO SECTION 120, LAND TITLE ACT

PLAN BCP

DEPOSITED IN THE LAND TITLE OFFICE
AT NEW WESTMINSTER, B.C.
THIS DAY OF _____, 2004.

REGISTRAR

REF:



LEGEND :
 (A) INDICATES CONTROL MONUMENT FOUND
 (C) INDICATES STANDARD CONCRETE POST FOUND
 (I) INDICATES STANDARD IRON POST FOUND
 (O) INDICATES STANDARD IRON POST PLACED
 GRID BEARINGS ARE DERIVED FROM OBSERVATIONS BETWEEN CONTROL MONUMENTS 77H6868 AND 5053
 INTEGRATED SURVEY AREA #1, CITY OF SURREY.
 DISTANCES SHOWN ARE GROUND LEVEL MEASURED DISTANCES. PRIOR TO COMPUTATION OF U.T.M. CO-ORDINATES MULTIPLY BY THE MEAN COMBINED FACTOR 0.9995905 (NAD 83 C.S.R.S.).

MURRAY & ASSOCIATES
201-12448 82nd AVENUE
SURREY, B.C.
V3W 3E9
(604) 597-9189

THIS PLAN LIES WITHIN THE GREATER VANCOUVER REGIONAL DISTRICT
(CITY OF SURREY)

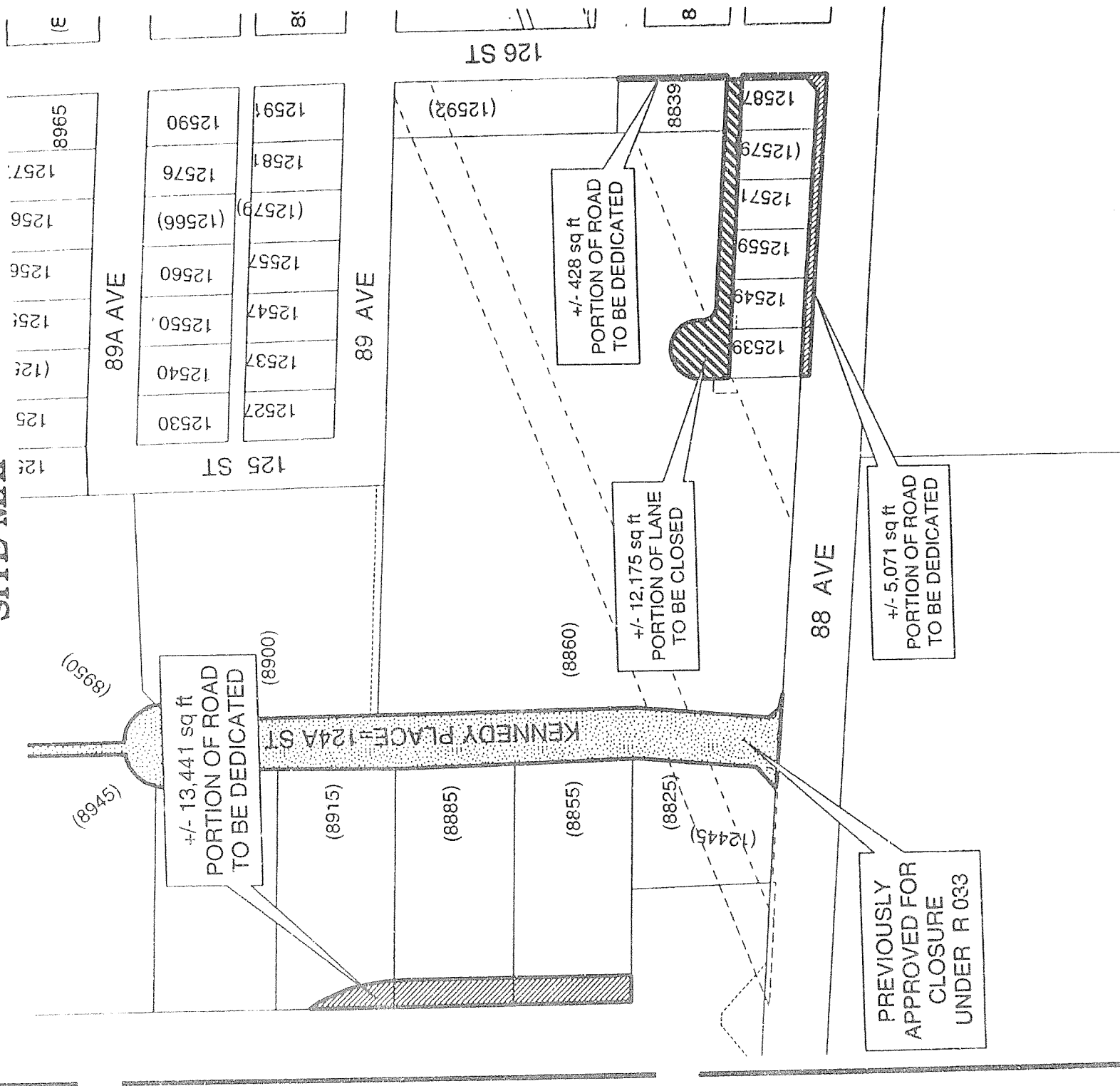
CITY OF SURREY
MAYOR: DOUGLAS McCALLUM
AUTHORIZED SIGNATORY
CITY CLERK
WITNESS AS TO SIGNATURE OF THE CITY CLERK
ADDRESS OF WITNESS
OCCUPATION OF WITNESS

I, H. DAVID LIDDLE, A BRITISH COLUMBIA LAND SURVEYOR OF ABBOTSFORD, IN BRITISH COLUMBIA, CERTIFY THAT I WAS PRESENT AT AND PERSONALLY SUPERINTENDED THE SURVEY REPRESENTED BY THIS PLAN, AND THAT THE SURVEY AND PLAN ARE CORRECT.
THE FIELD SURVEY WAS COMPLETED ON THE 26th DAY OF FEBRUARY, 2004.
THE PLAN WAS COMPLETED AND CHECKED, AND THE CHECKLIST FILED UNDER # ECP12187
ON THE 27th DAY OF FEBRUARY, 2004.

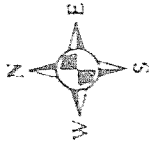
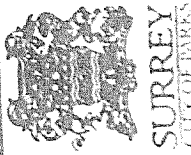
H. David Liddle B.C.L.S.

15316

APPENDIX I SITE MAP



PRODUCED BY ENGINEERING, GIS SECTION: MARCH 1, 2004, KGS



LANE CLOSURE AT 88 AVENUE & 126 STREET

REALTY DIVISION

The data provided is compiled from various sources and IS NOT warranted as to its accuracy or reliability. This information is provided for information and convenience purposes only. This information should be confirmed at the Land Title Office by the City of Surrey.

ING GIS MAPS CORPORATE REPORTS REALTY 888 126 SM.mxd