

CITY OF SURREY

BY-LAW NO. 15299

A By-law to close and to remove the dedication
of a highway of portions of Kennedy Place at 88 Avenue.

.....

WHEREAS pursuant to Subsection 40(1)(a) of the *Community Charter*, S.B.C. 2003, c. 26, the Council may, by by-law, close all or part of a highway that is vested in the municipality to all or some types of traffic;

AND WHEREAS pursuant to Section 40(2) of the *Community Charter*, S.B.C. 2003, c. 26, the Council may, by by-law, remove the dedication of a highway that has been closed by a by-law under Subsection 40(1)(a).

NOW THEREFORE the Council of the City of Surrey in open meeting assembled, ENACTS as follows:

1. Those portions of road lying in Section 31 Township 2 New Westminster District, shown outlined in heavy bold outline on a Reference Plan attached hereto and forming part of this by-law, duly signed by the Mayor and Clerk, prepared by Mike Bernemann, B.C.L.S. on the 6th day of February, 2004, and more particularly described as follows:

That portion of road dedicated by Plan LMP2901, containing 0.593 hectares and called Parcel "A";

That portion of road dedicated by Plan 2135, containing 17 square metres and called Parcel "B";

That portion of road dedicated on Plan LMP50043, containing 30 square metres and called Parcel "C";

That portion of road dedicated on Plan LMP50043, containing 12 square metres and called Parcel "D",

(hereinafter referred to as those portions of Kennedy Place)

shall be closed to traffic.

2. The dedication as highway be removed of said portions of Kennedy Place.
3. This By-law may be cited for all purposes as "Surrey Close and Remove the Dedication of Highway of a Portion of Kennedy Place at 88 Avenue By-law, 2004, No. 15299".

READ A FIRST, SECOND AND THIRD TIME on the 1st day of March, 2004.

NOTICE OF INTENTION

ADVERTISED on the 6th and 7th day of March and on the 13th and 14th day of March, 2004, in the SURREY LEADER/PEACE ARCH Community newspaper.

RECONSIDERED AND FINALLY ADOPTED, signed by the Mayor and Clerk, and sealed with the Corporate Seal on the 22nd day of March, 2004.

_____ MAYOR

_____ CLERK

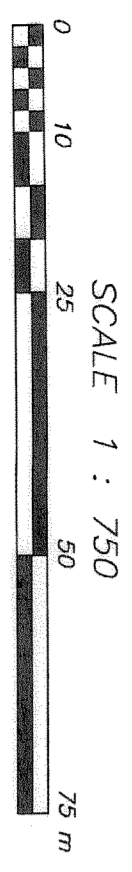
h:\by-laws\pending\2004\clk15299.blw.doc

Reference Plan To Accompany City Of Surrey Highway Dedication
Cancellation By-Law 15279 - Of Portions Of Road Dedicated On
Plan 2135, Plan LMP2901 And Plan LMP50043 All Of Section 31
Township 2 New Westminster District

Pursuant To Section 120 Of The Land Title Act
B.C.G.S. 92G.016

Plan BCP

Deposited in the Land Title Office
At New Westminster, B.C.
This "Day" Of 2004

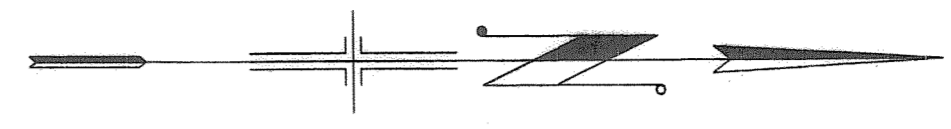
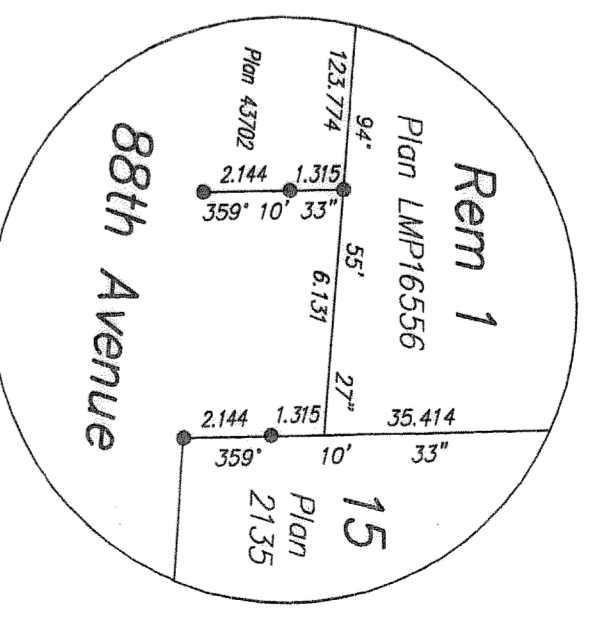
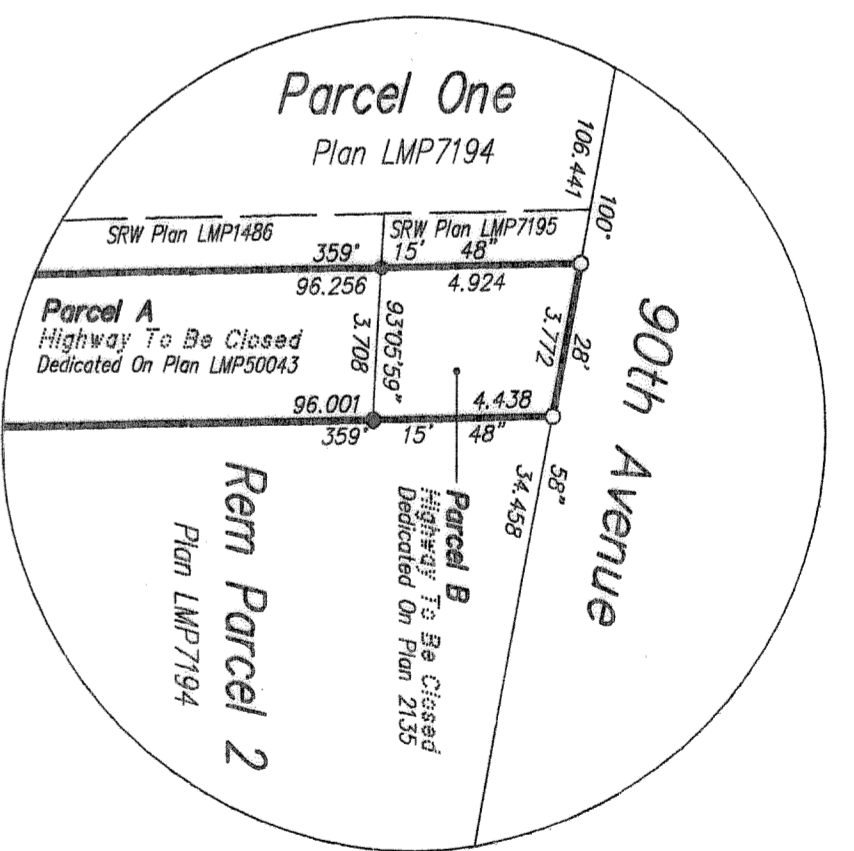
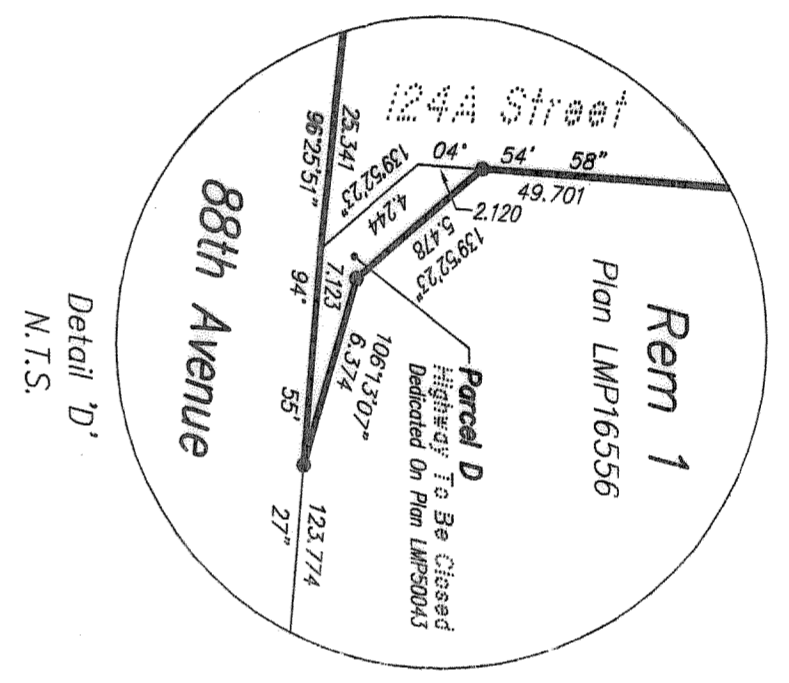


Integrated Survey Area No. 1, Surrey, M483 (CSRS)
This Plan Shows Ground Level Measured Distances
Prior To Computation Of U.T.M. Coordinates,
Multiply By Combined Factor 0.9999810

LEGEND:

- ⊙ Control Monument Found
- Standard Iron Post Found
- Standard Iron Post Set
- Standard Lead Plug Set

Grid Bearings Are Derived From Observations Between
Control Monuments 771655 and 5053
All Distances Are In Metres And Decimals Thereof



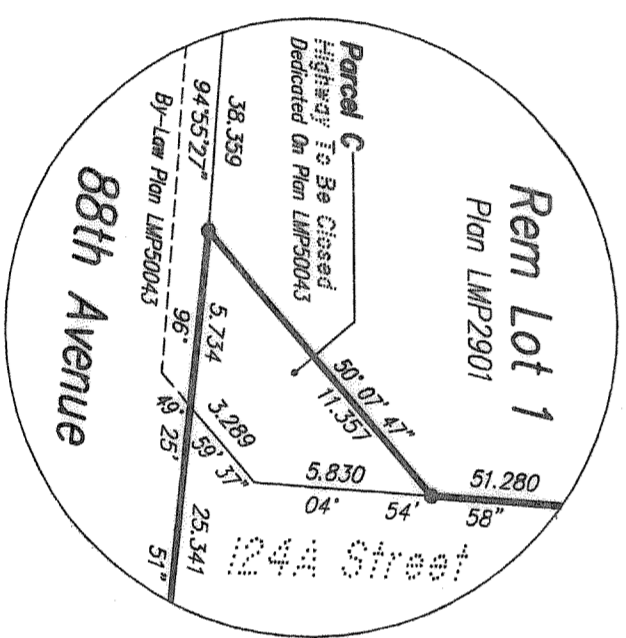
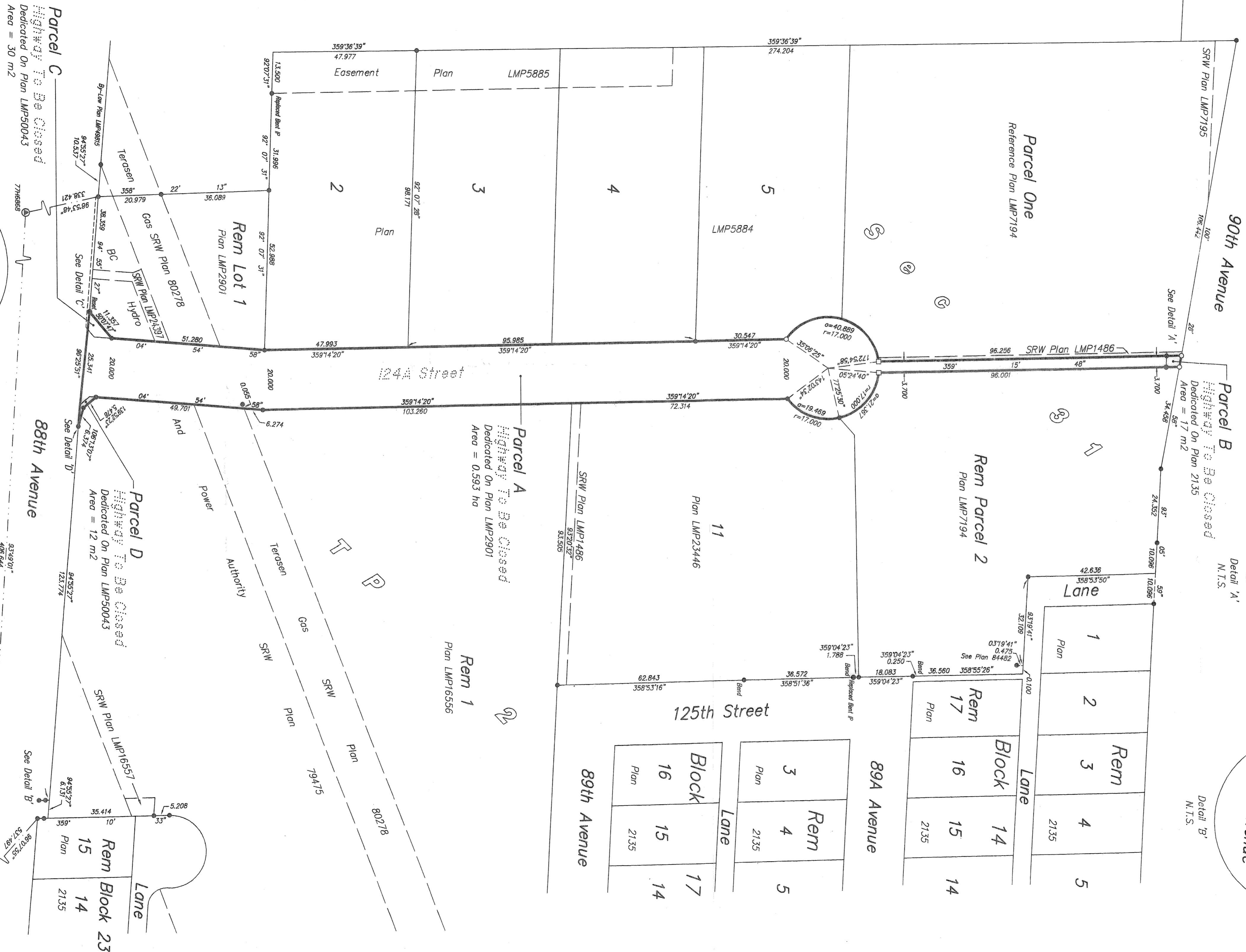
Highway To Be Closed	Area
A Portion Of Road Dedicated On Plan 2135 Section 31 Township 2 M483	17 m ²
A Portion Of Road Dedicated On Plan LMP2901 Section 31 Township 2 M483	0.593 ha
A Portion Of Road Dedicated On Plan LMP50043 Section 31 Township 2 M483	30 m ²
A Portion Of Road Dedicated On Plan LMP50043 Section 31 Township 2 M483	12 m ²

City Of Surrey
Major Point Name:
City Clerk:
City Name:
Witness As To Both Signatures:
Print Name:
Address:
Occupation:

This Plan Lies Within The Greater
Vancouver Regional District

I, Mike Bertram, A British Columbia Land Surveyor,
Present At And Personally Supervised The Survey
Represented By This Plan, And That The Survey And
Plan Are Correct. The Field Survey Was Completed On
February 2, 2004. This Plan Was Completed And
Filed On February 2, 2004. The Certificate Filed Under
11540, On The 6th Day Of February, 2004.

B.C.L.S.



Detail 'C'
N.T.S.