

CITY OF SURREY

BY-LAW NO. 15292

A By-law to close and to remove the dedication
of highway of a portion of Lane at 64 Avenue and 134A Street.

.....

WHEREAS pursuant to Subsection 40(1)(a) of the *Community Charter*, S.B.C. 2003, c. 26, the Council may, by by-law, close all or part of a highway that is vested in the municipality to all or some types of traffic;

AND WHEREAS pursuant to Section 40(2) of the *Community Charter*, S.B.C. 2003, c. 26, the Council may, by by-law, remove the dedication of a highway that has been closed by a by-law under Subsection 40(1)(a).

NOW THEREFORE the Council of the City of Surrey in open meeting assembled, ENACTS as follows:

1. That portion of road lying in Section 8 Township 2 New Westminster District, shown outlined in heavy black line on a Reference Plan attached hereto, duly signed by the Mayor and Clerk, prepared by Raymond Janzen, B.C.L.S. on the 3rd day of February, 2004, and more particularly described as follows:

That portion of road dedicated by Plan 19854, containing 54 square metres and called Parcel "A":

(hereinafter referred to as that portion of Lane)

shall be closed to traffic.

2. The dedication as highway be removed of said portion of Lane.
3. This By-law may be cited for all purposes as "Surrey Close and Remove the Dedication of Highway of a Portion of Lane at 134A Street between 63 Avenue and 64 Avenue By-law, 2004, No. 15292".

READ A FIRST, SECOND AND THIRD TIME on the 23rd day of February, 2004.

NOTICE OF INTENTION

ADVERTISED on the 28th and 29th day of February and on the 6th and 7th day of March, 2004, in the SURREY LEADER/PEACE ARCH Community newspaper.

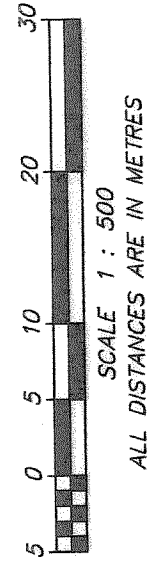
RECONSIDERED AND FINALLY ADOPTED, signed by the Mayor and Clerk, and sealed with the Corporate Seal on the 22nd day of March, 2004.

_____ MAYOR

_____ CLERK

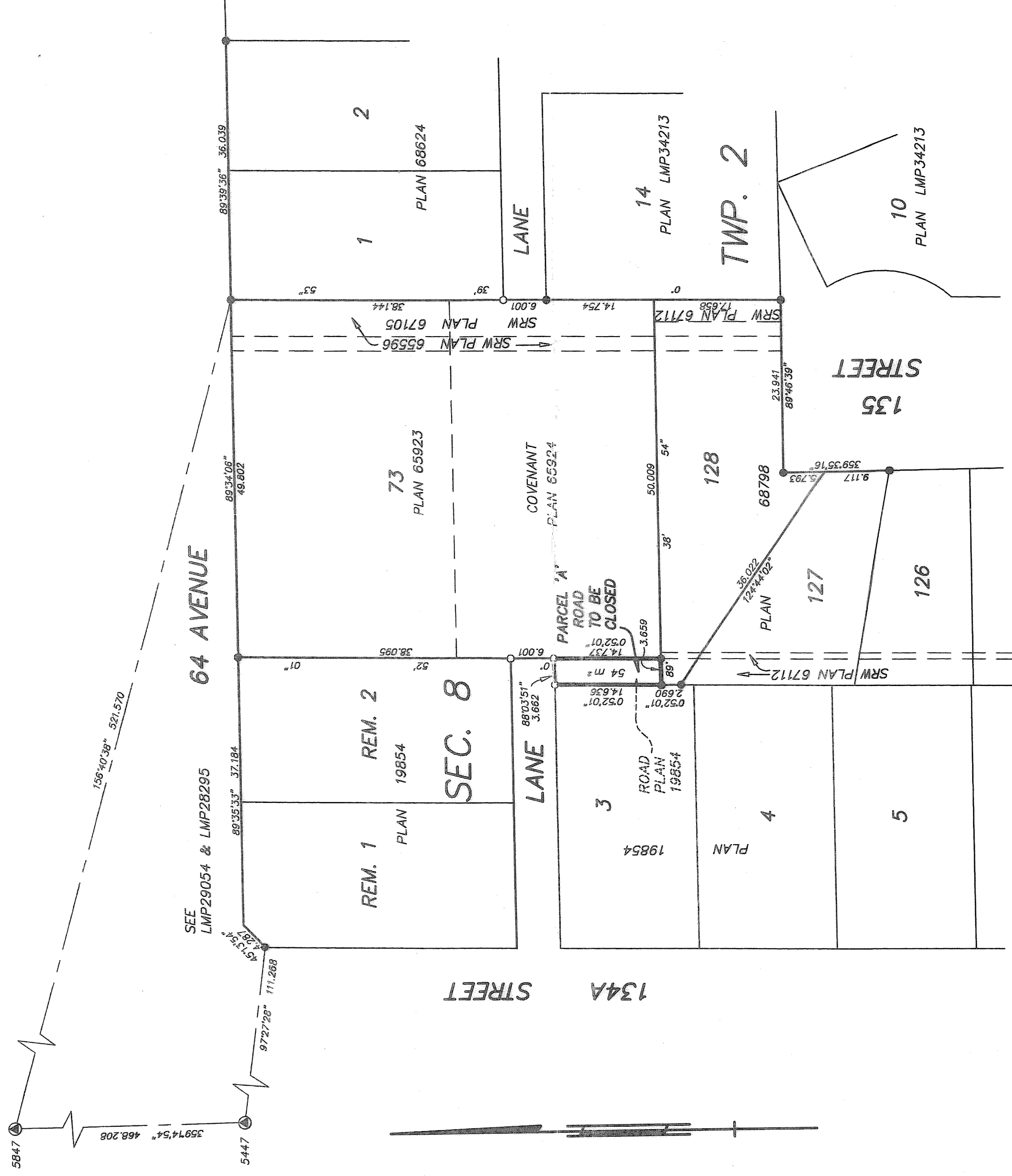
REFERENCE PLAN TO ACCOMPANY A CITY OF SURREY
 HIGHWAY DEDICATION CANCELLATION BY-LAW 15292
 OF A PORTION OF
 SECTION 8, TOWNSHIP 2,
 NEW WESTMINSTER DISTRICT, SHOWN ROAD ON PLAN 19854
 B.C.G.S. 92G.016

PLAN BCP
 DEPOSITED IN THE LAND TITLE OFFICE
 AT NEW WESTMINSTER, B.C.
 THIS DAY OF _____, 2004



REGISTRAR
 REF: _____

PURSUANT TO SECTION 120 OF THE LAND TITLE ACT



OWNER: CITY OF SURREY

MAYOR: DOUGLAS McCALLUM

AUTHORIZED SIGNATORY
 CITY CLERK

WITNESS AS TO SIGNATURE OF THE CITY CLERK

ADDRESS OF WITNESS

OCCUPATION OF WITNESS

LEGEND:

- ⊙ INDICATES CONTROL MONUMENT FOUND
- INDICATES STANDARD IRON POST FOUND
- INDICATES STANDARD IRON POST PLACED

GRID BEARINGS ARE DERIVED FROM OBSERVATIONS BETWEEN CONTROL MONUMENTS 5447 AND 5847.

INTEGRATED SURVEY AREA #1, CITY OF SURREY.

DISTANCES SHOWN ARE GROUND LEVEL MEASURED DISTANCES. PRIOR TO COMPUTATION OF U.T.M. CO-ORDINATES MULTIPLY BY THE MEAN COMBINED FACTOR 0.9996000 (NAD 83 C.S.R.S.).

MURRAY & ASSOCIATES
 201-12448 82nd AVENUE
 SURREY, B.C.
 V3W 3E9
 (604) 597-9189

THIS PLAN LIES WITHIN THE GREATER VANCOUVER REGIONAL DISTRICT
 (CITY OF SURREY)

B. C. L. S.
 FILE 8961-3

I, RAYMOND HAROLD JANZEN, A BRITISH COLUMBIA LAND SURVEYOR, OF DELTA, IN BRITISH COLUMBIA, CERTIFY THAT I WAS PRESENT AT AND PERSONALLY SUPERINTENDED THE SURVEY REPRESENTED BY THIS PLAN, AND THAT THE SURVEY AND PLAN ARE CORRECT.
 THE FIELD SURVEY WAS COMPLETED ON THE 3rd DAY OF FEBRUARY, 2004.
 THE PLAN WAS COMPLETED AND CHECKED, AND THE CHECKLIST FILED UNDER ECP#11666 ON THE 12th DAY OF FEBRUARY, 2004.

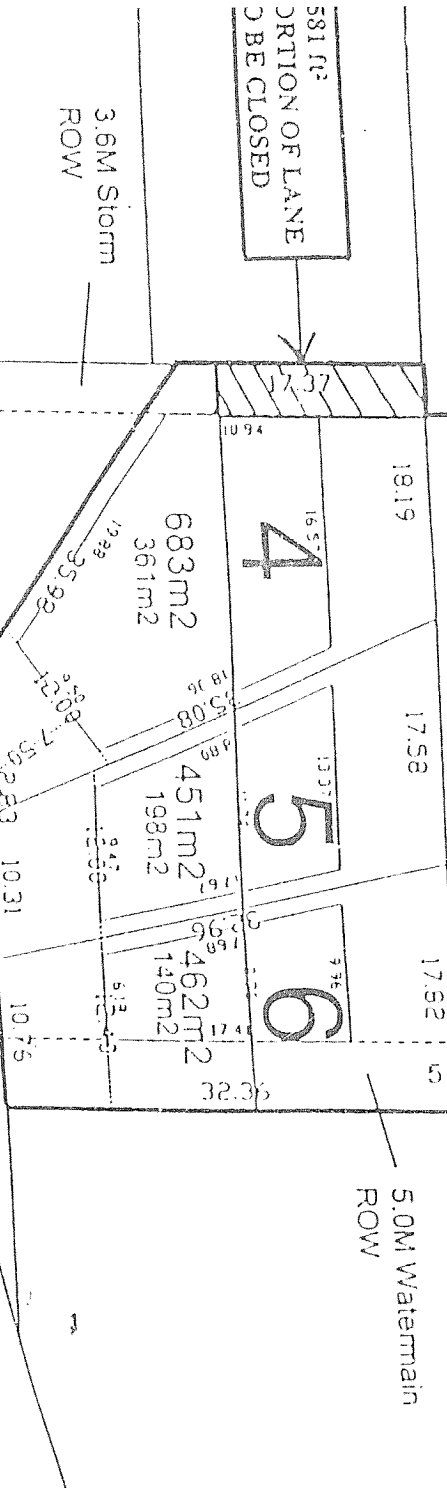
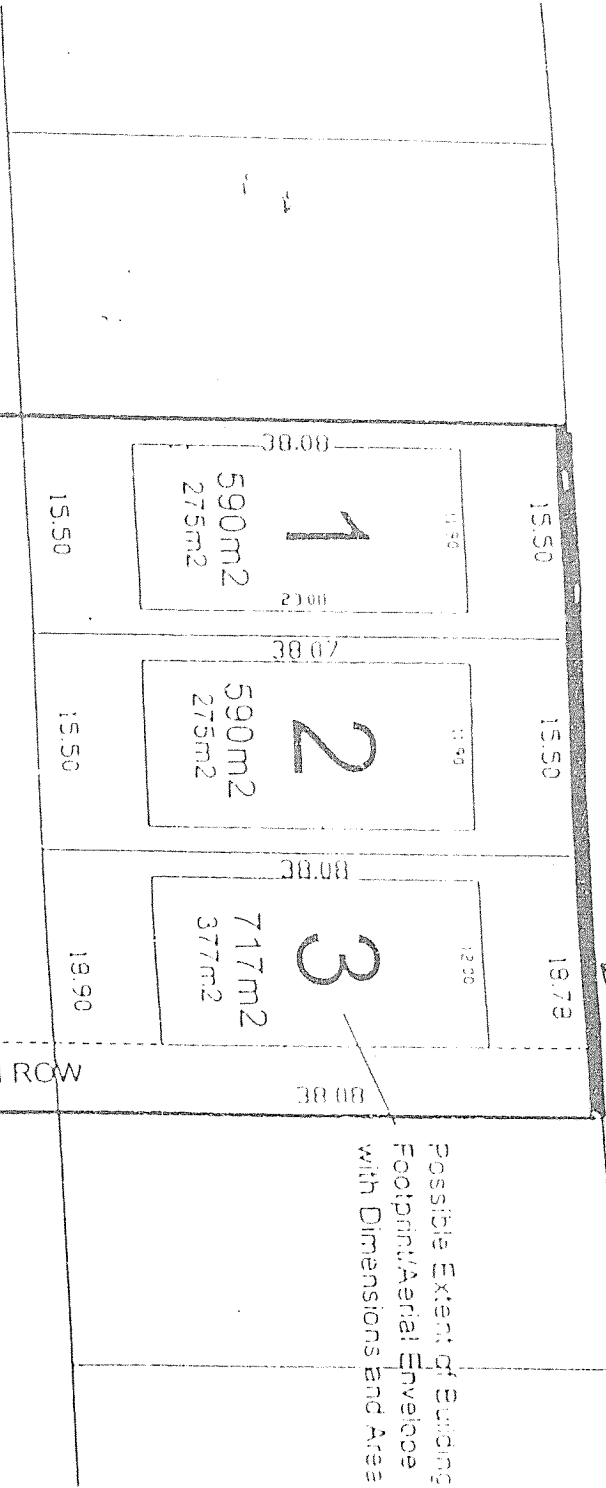
15292

APPENDIX III
PROPOSED SUBDIVISION LAYOUT

64 AVENUE

ADDITIONAL PORTIONS
OF ROAD TO BE
DEDICATED WITHOUT
COMPENSATION

Possible Extent of Building
Footprint/Aerial Envelope
with Dimensions and Area



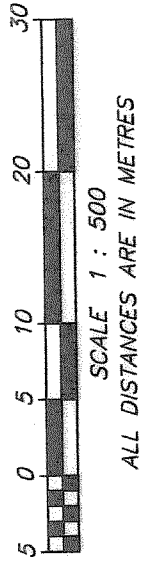
SECTION OF LANE
TO BE CLOSED

3.6M Storm
ROW

135 STREET

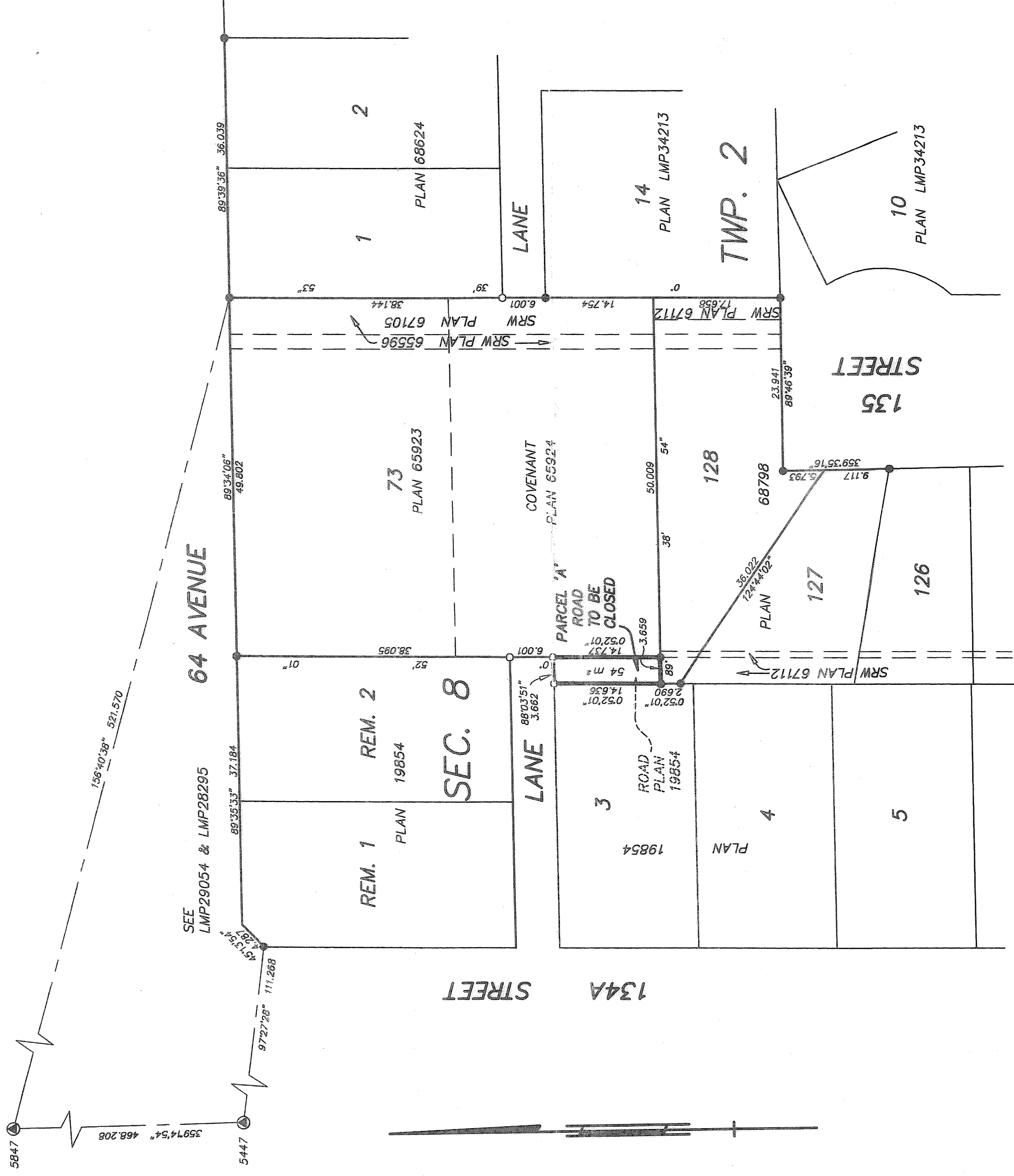
REFERENCE PLAN TO ACCOMPANY A CITY OF SURREY
 HIGHWAY DEDICATION CANCELLATION BY-LAW 15292
 OF A PORTION OF
 SECTION 8, TOWNSHIP 2,
 NEW WESTMINSTER DISTRICT, SHOWN ROAD ON PLAN 19854
 B.C.G.S. 92G.016

PLAN BCP
 DEPOSITED IN THE LAND TITLE OFFICE
 AT NEW WESTMINSTER, B.C.
 THIS DAY OF _____, 2004



REGISTRAR
 REF:

PURSUANT TO SECTION 120 OF THE LAND TITLE ACT



LEGEND:

- INDICATES CONTROL MONUMENT FOUND
- INDICATES STANDARD IRON POST FOUND
- INDICATES STANDARD IRON POST PLACED

GRID BEARINGS ARE DERIVED FROM OBSERVATIONS BETWEEN CONTROL MONUMENTS 5447 AND 5847, INTEGRATED SURVEY AREA #1, CITY OF SURREY. DISTANCES SHOWN ARE GROUND LEVEL MEASURED DISTANCES. PRIOR TO COMPUTATION OF U.T.M. CO-ORDINATES MULTIPLY BY THE MEAN COMBINED FACTOR 0.9996000 (NAD 83 C.S.R.S.).

OWNER: CITY OF SURREY

MAYOR: DOUGLAS McCALLUM

AUTHORIZED SIGNATORY
 CITY CLERK

WITNESS AS TO SIGNATURE OF THE CITY CLERK

ADDRESS OF WITNESS

OCCUPATION OF WITNESS

MURRAY & ASSOCIATES
 201-12448 82nd AVENUE
 SURREY, B.C.
 V3W 3E9
 (604) 597-9189

THIS PLAN LIES WITHIN THE GREATER VANCOUVER REGIONAL DISTRICT
 (CITY OF SURREY)

B. C. L. S.
 FILE 8961-3

I, RAYMOND HAROLD JANZEN, A BRITISH COLUMBIA LAND SURVEYOR, OF DELTA, IN BRITISH COLUMBIA, CERTIFY THAT I WAS PRESENT AT AND PERSONALLY SUPERINTENDED THE SURVEY REPRESENTED BY THIS PLAN, AND THAT THE SURVEY AND PLAN ARE CORRECT.
 THE FIELD SURVEY WAS COMPLETED ON THE 3rd DAY OF FEBRUARY, 2004.
 THE PLAN WAS COMPLETED AND CHECKED, AND THE CHECKLIST FILED UNDER ECP#11666 ON THE 12th DAY OF FEBRUARY, 2004.

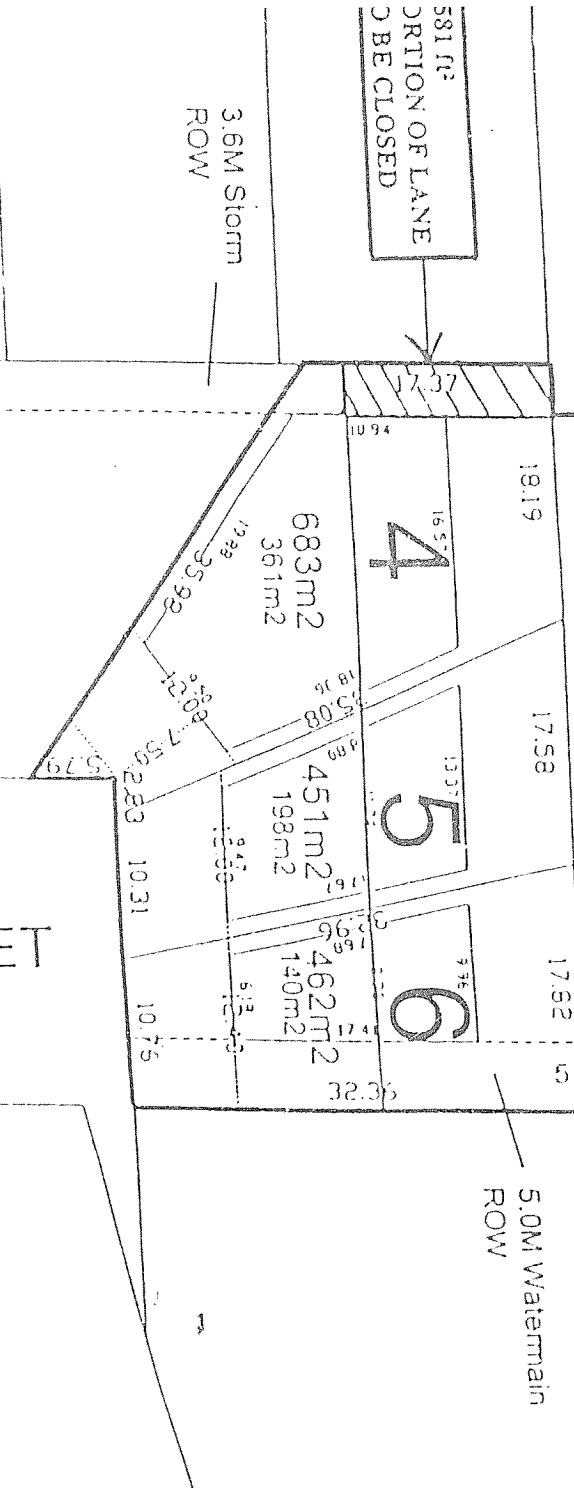
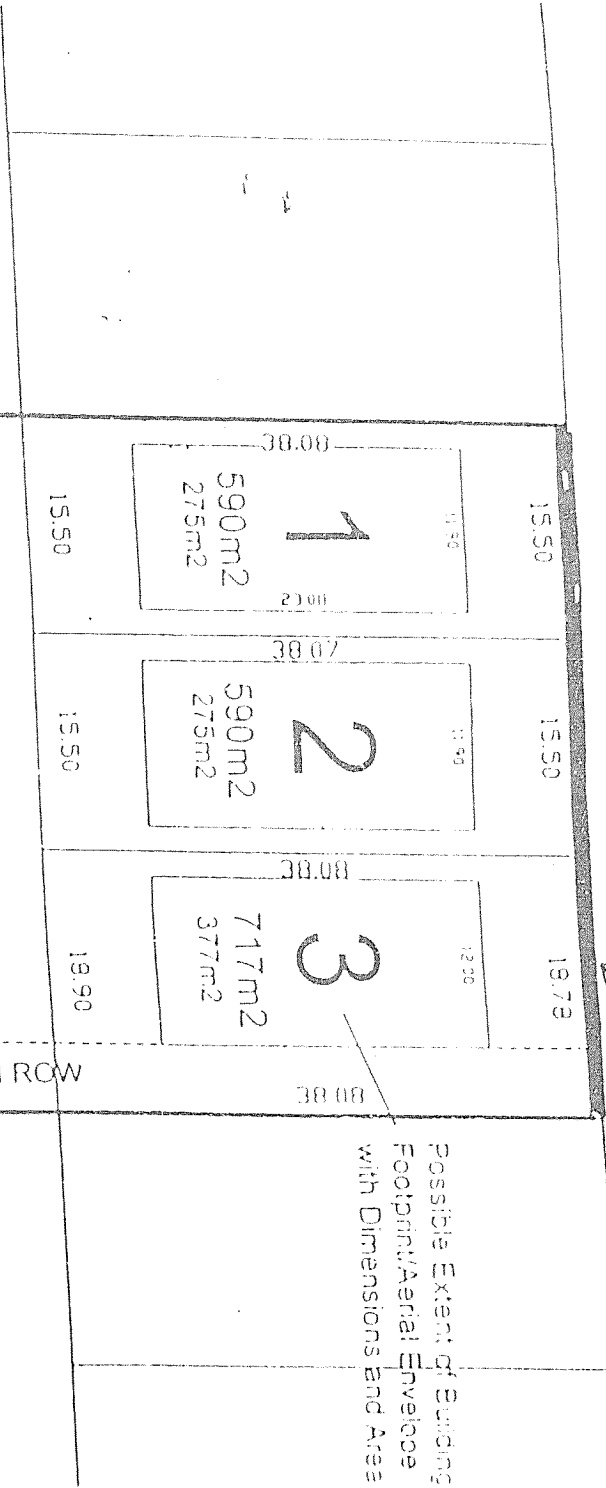
15292

APPENDIX III
PROPOSED SUBDIVISION LAYOUT

64 AVENUE

ADDITIONAL PORTIONS
OF ROAD TO BE
DEDICATED WITHOUT
COMPENSATION

Possible Extent of Building
Footprint/Aerial Envelope
with Dimensions and Area



135 STREET