

CITY OF SURREY

BY-LAW NO. 13249

A by-law to stop up and close a portion of  
Lane at 94 Avenue and 190 Street.  
.....

WHEREAS the Council of the City of Surrey, pursuant to Section 541. of the *Municipal Act*, R.S.B.C. 1996, c.323, as amended, may by by-law, stop up and close to traffic a highway or any portion of a highway;

NOW, THEREFORE, the Council of the City of Surrey, in open meeting assembled, ENACTS AS FOLLOWS:

1. All that portion of North East 1/4 Section 33, Township 8, New Westminster District shown dedicated road on Plan 519 and shown within the heavy bold outline on a Reference Plan attached hereto and prepared by L. Achtemichuk, B.C.L.S. on the 23rd day of September, 1997, containing 245.0 square metres and called Parcel "A"

(Portion of Lane at 94 Avenue and 190 Street)

is hereby stopped up and closed to traffic.

2. This By-law may be cited for all purposes as "Portion of Lane at 94 Avenue and 190 Street Road Closing By-law, 1997, No. 13249."

PASSED THREE READINGS on the 14th day of October, 1997.

RECONSIDERED AND FINALLY ADOPTED, signed by the Mayor and Clerk, and sealed with the Corporate Seal on the 27th day of October, 1997.

\_\_\_\_\_MAYOR

\_\_\_\_\_CLERK

Reference Plan To Accompany City Of Surrey Road Closing By-Law No. 13249  
 Of A Portion Of Road In NE 1/4 Sec 33 Tp 8 N.W.D.  
 Dedicated By Plan 519  
 B.C.G.S. 92G:017

Plan LMP ---

Pursuant To Section 120 Of The Land Title Act

SCALE 1 : 750



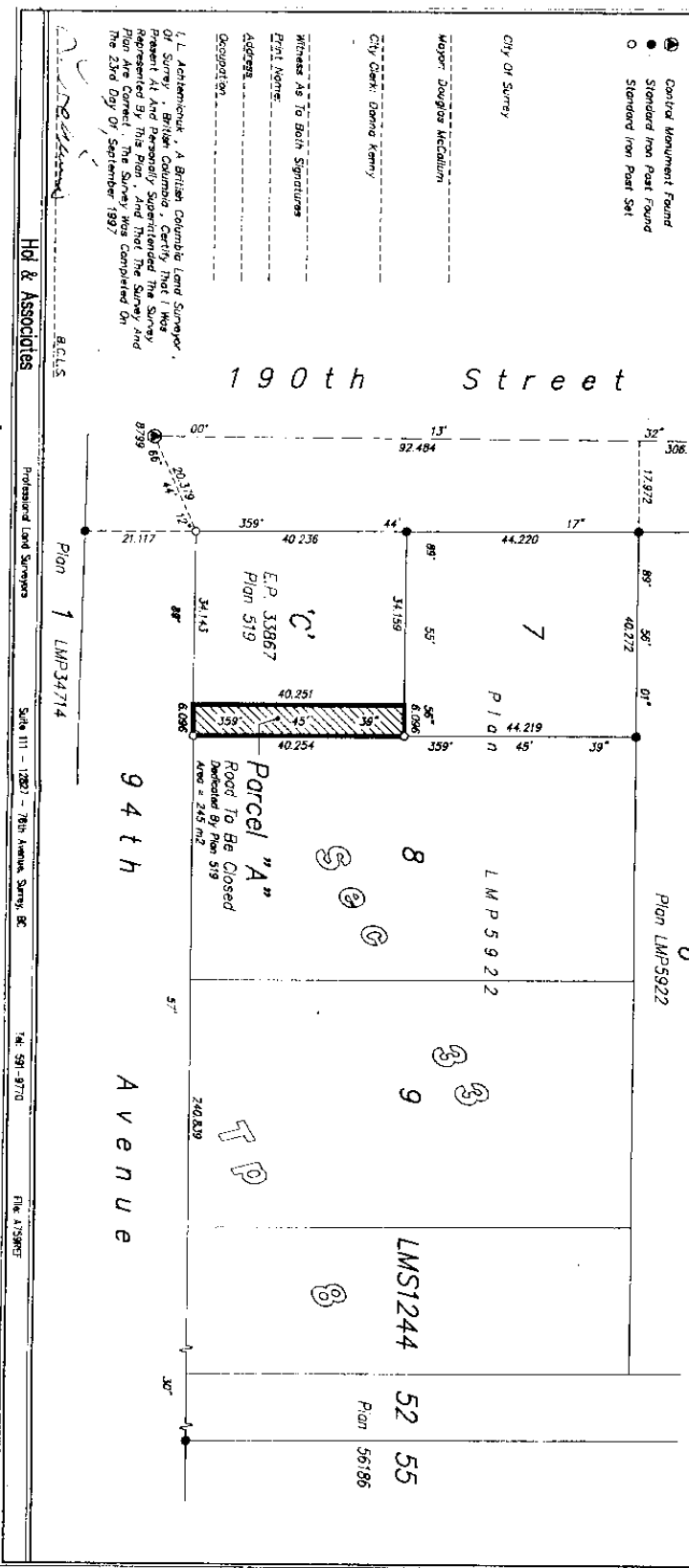
LEGEND:

- Old Bearings Are Derived From Observations
- Survey Control Monument 8194529 & 8799
- All Distances Are In Metres And Decimals Thereof
- Control Monument Found
- Standard Iron Post Found
- Standard Iron Post 541

This Plan Lies Within The Greater Vancouver Regional District  
 Integrated Survey Area No.1 (Surrey) NAD 83  
 This Plan Shows Ground Level Measured Distances  
 Prior To Computation Of U.T.M. Coordinates  
 Multiplied By Combined Factor 0.9998057



Deposited In The Land Title Office  
 At New Westminster, B.C.  
 This Day Of \_\_\_\_\_  
 Registrar



1 L.L. Ashkenbuck, A British Columbia Land Surveyor,  
 Of Surrey, British Columbia, Being Personally Sworn and Represented By This Plan, And That The Survey and Plan Are Correct. The Survey Was Completed on  
 The 23rd Day Of September 1997

Professional Land Surveyor  
 Plan 1 LMP 34714  
 A.C.L.S.  
 Hold & Associates  
 Suite 111 - 12827 - 76th Avenue, Surrey, BC  
 Tel: 591-9770  
 Fax: 591-9770  
 The ATISMET