

CITY OF SURREY

BYLAW NO. 18454

Surrey Park Closure Bylaw

.....

WHEREAS pursuant to Section 27 of the *Community Charter*, SBC, 2003, c. 26, as amended, the Council of the City of Surrey may by bylaw dispose of all or part of dedicated park land vested in a municipality.

NOW, THEREFORE, the Council of the City of Surrey, ENACTS AS FOLLOWS:

1. The Council hereby authorizes the removal of the park dedication of land within that portion of Section 25 Township 2, Plan BCP 30044, New Westminster District shown as Park to be closed within the heavy bold outline on Reference Plan EPP51854 attached hereto, prepared by Montgomery C. Brisson, B.C.L.S. on the 27th day of May, 2015, and described as follows:

That portion of Park shown as Parcel 'A' and containing 0.870 hectares; and

That portion of Park shown as Parcel 'B' and containing 3.00 hectares.

2. The Council hereby authorizes that the proceeds of the disposal be placed to the credit of the reserve fund established under Section 188 of the *Community Charter*, SBC, 2003, c. 26, as amended, for the purpose of acquiring park lands.
3. This Bylaw may be cited as "Surrey Park Closure Bylaw, 2015, No. 18454"

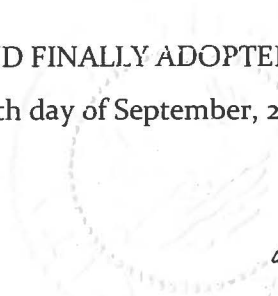
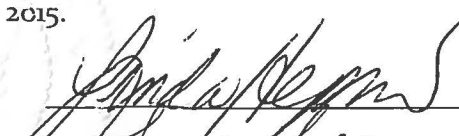
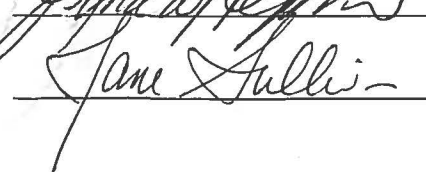
PASSED FIRST READING on the 13th day of July, 2015.

PASSED SECOND READING on the 13th day of July, 2015.

PASSED THIRD READING on the 13th day of July, 2015.

RECEIVED APPROVAL OF THE ELECTORS on the 14th day of September, 2015.

RECONSIDERED AND FINALLY ADOPTED, signed by the Mayor and Clerk, and sealed with the Corporate Seal on 28th day of September, 2015.


 MAYOR
 CLERK

REFERENCE PLAN TO ACCOMPANY CITY OF SURREY PARK CLOSING BYLAW NUMBER 18454
 OF PORTIONS OF PARK LYING IN SECTION 25 TOWNSHIP 2
 NEW WESTMINSTER DISTRICT DEDICATED PARK ON PLAN BCP30044

PLAN EPP51854

BCGS 92G.017

PURSUANT TO SECTION 12D, LAND TITLE ACT
 PURSUANT TO SECTION 27, COMMUNITY CHARTER

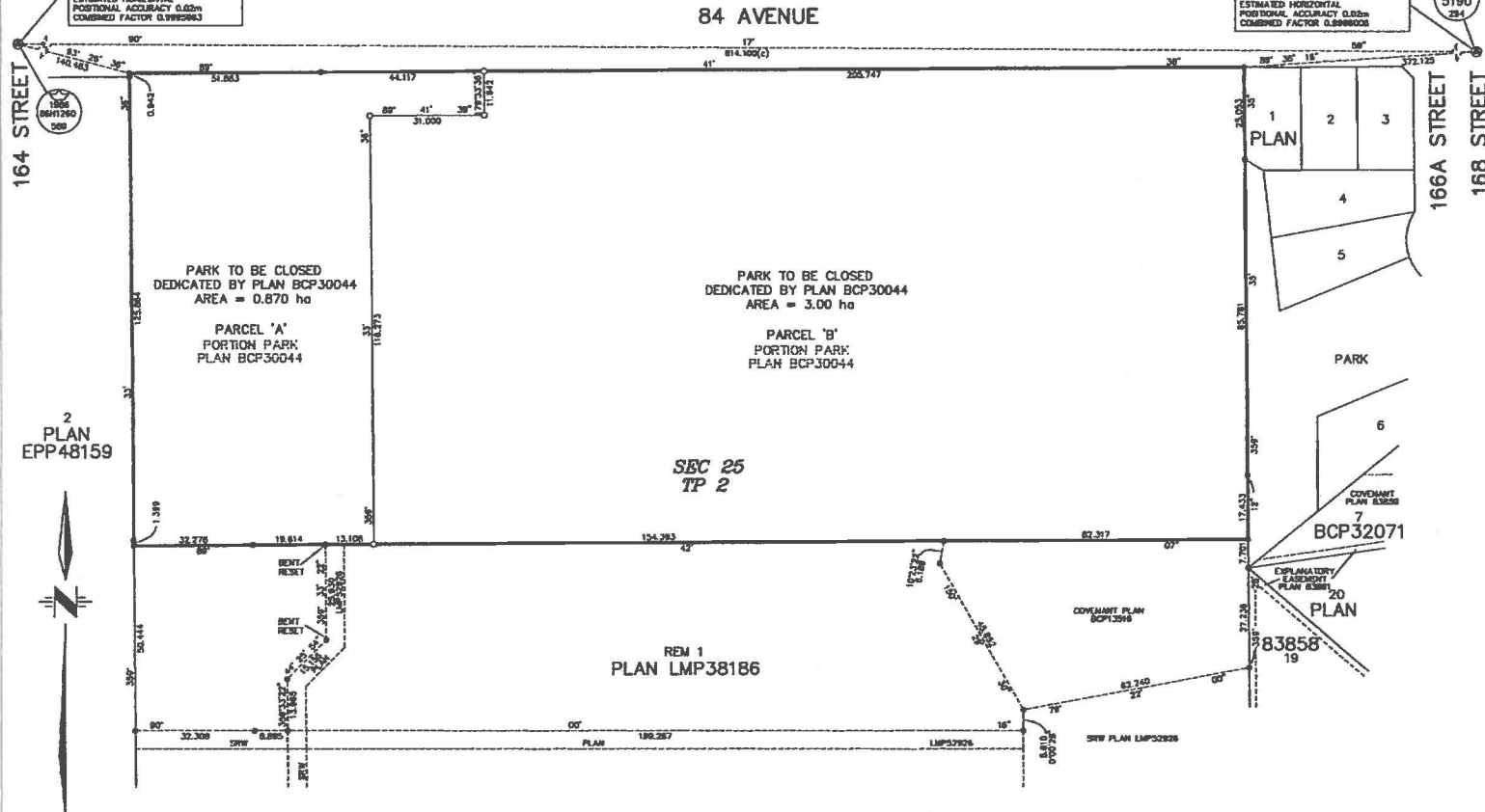
LEGEND

- ⊕ DENOTES CONTROL MONUMENT FOUND
- ⊙ DENOTES STANDARD IRON POST FOUND
- DENOTES STANDARD IRON POST SET

BOOK OF REFERENCE		
DESCRIPTION	AREA	PARCEL
PARK TO BE CLOSED		
PORTION OF PARK LYING IN SEC 25 TP 2 HMO DEDICATED BY PLAN BCP30044	0.870 ha	PARCEL 'A'
PORTION OF PARK LYING IN SEC 25 TP 2 HMO DEDICATED BY PLAN BCP30044	3.00 ha	PARCEL 'B'

UTM ZONE 10 COORDINATES
 DATUM: NAD83(CSRS) 4.0.D.B.C.1.0VRD
 NORTHING: 5444763.488
 EASTING: 548932.913
 ESTIMATED HORIZONTAL
 POSITIONAL ACCURACY: 0.02m
 COMBINED FACTOR: 0.9992963

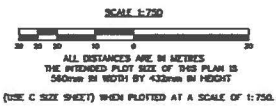
UTM ZONE 10 COORDINATES
 DATUM: NAD83(CSRS) 4.0.D.B.C.1.0VRD
 NORTHING: 544758.214
 EASTING: 517745.773
 ESTIMATED HORIZONTAL
 POSITIONAL ACCURACY: 0.02m
 COMBINED FACTOR: 0.9998008



2
 PLAN
 EPP48159

CITY OF SURREY
 SURVEY SECTION
 13450 - 104 AVE.
 SURREY, B.C. V3T 1V6
 TEL: (604) 591-4253
 FAX: (604) 591-6883

INTEGRATED SURVEY AREA NO. 1, SURREY, NAD83 (CSRS) 4.0.D.B.C.1.0VRD
 GRID BEARINGS ARE DERIVED FROM OBSERVATIONS BETWEEN
 GEODETIC CONTROL MONUMENTS SH90 AND SH1263.
 THIS PLAN SHOWS HORIZONTAL GROUND-LEVEL DISTANCES UNLESS
 OTHERWISE SPECIFIED. TO COMPUTE GRID DISTANCES, MULTIPLY
 GROUND-LEVEL DISTANCES BY THE AVERAGE COMBINED FACTOR OF
 0.9992963 WHICH HAS BEEN DERIVED FROM SH1263.



THIS PLAN LIES WITHIN THE GREATER
 VANCOUVER REGIONAL DISTRICT
 THE FIELD SURVEY REPRESENTED BY THIS PLAN WAS COMPLETED ON
 THE 27TH DAY OF MAY, 2015.
 MONTGOMERY C. BRISON, B.C.S. 774
 5308A.DWG