

CITY OF SURREY

BY-LAW NO. 17792

A by-law to close Park dedicated by a Subdivision Plan in
the City of Surrey.

.....

WHEREAS pursuant to Section 27 of the *Community Charter*, SBC, 2003, c. 26, as amended, the Council of the City of Surrey may by by-law dispose of all or part of dedicated parkland vested in a municipality provided that the proceeds of the disposal are to be placed to the credit of the park land acquisition reserve fund.

NOW, THEREFORE, the Council of the City of Surrey, ENACTS AS FOLLOWS:

1. The Council hereby authorizes the disposal of all that portion of Section 17 Township 1 New Westminster District shown as dedicated Park on Plan 76846 and included within the heavy bold outline on a reference plan prepared by Lorin Levac, B.C.L.S. on the 20th day of December, 2012, containing 60.4 square meters and called Parcel A.
2. The Council hereby authorizes that instead of taking land in exchange of the park disposal, the proceeds of the disposal be placed to the credit of the reserve fund established under Section 188 of the *Community Charter*, SBC, 2003, c. 26, as amended, for the purpose of acquiring park lands.
3. As required by Section 84 of the *Community Charter*, SBC, 2003, c. 26, as amended, an alternative approval process was provided in accordance with Section 86.
4. This By-law may be cited as "Surrey Park Closure By-law, 2013, No. 17792".

PASSED FIRST READING on the 28th day of January, 2013.


PASSED SECOND READING on the 28th day of January, 2013.

PASSED THIRD READING on the 28th day of January, 2013.

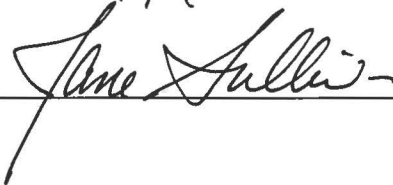
NOTICE OF INTENTION ADVERTISED in the SURREY LEADER AND PEACE ARCH NEWS
on the 31st day of January, 2013 and 7th day of February, 2013.

RECEIVED APPROVAL OF THE ELECTORS on the 11th day of March, 2013.

RECONSIDERED AND FINALLY ADOPTED, signed by the Mayor and Clerk, and sealed with the
Corporate Seal on 11th day of March, 2013.



Acting
MAYOR



CLERK

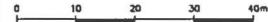


REFERENCE PLAN TO ACCOMPANY THE CITY OF SURREY
 PARK CLOSURE BYLAW No. 17792 OF A PORTION OF PARK
 DEDICATED BY PLAN 76846, SECTION 17 TOWNSHIP 1
 NEW WESTMINSTER DISTRICT

PLAN EPP26386

PURSUANT TO SECTION 120 OF THE LAND TITLE ACT
 AND SECTION 27 OF THE COMMUNITY CHARTER

BCGS 92G.006
 CITY OF SURREY
 SCALE 1:500



(All distances are in metres)

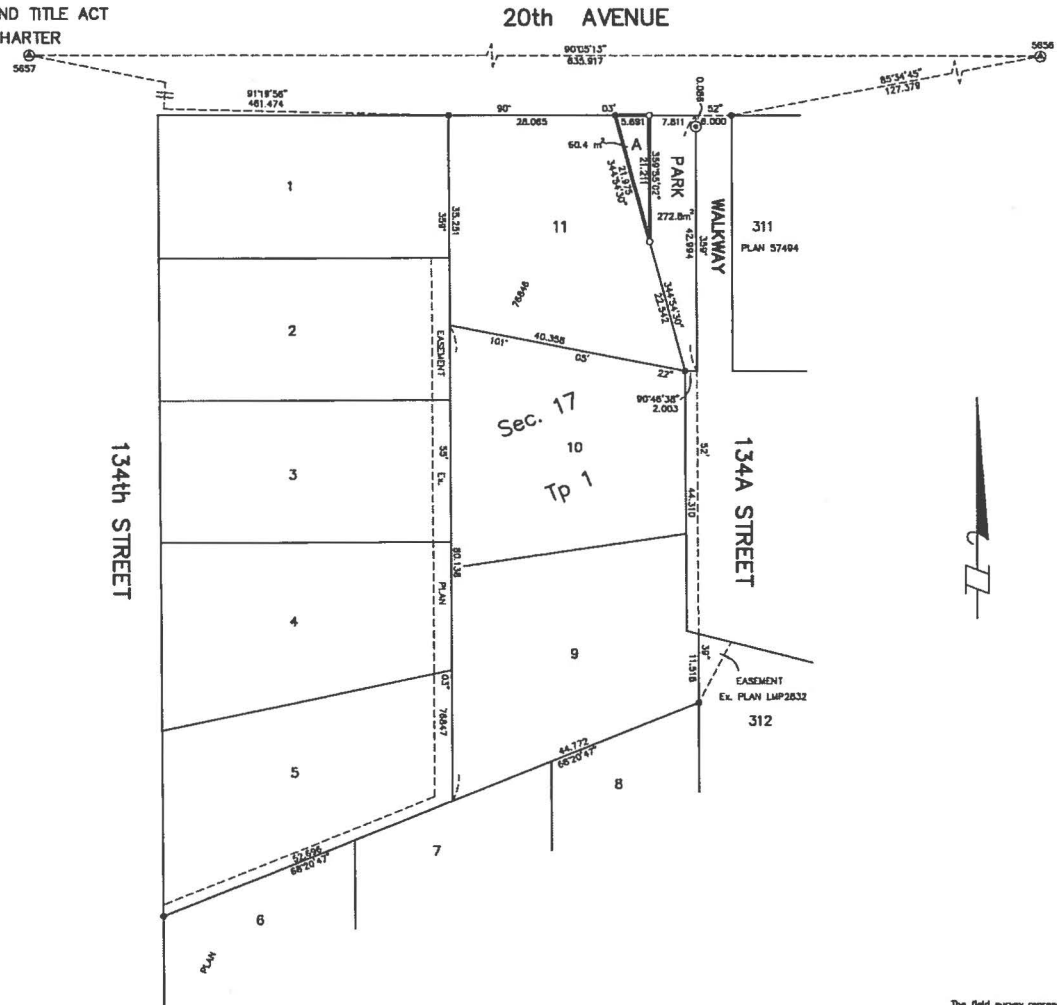
The intended plot size of this plan is 560mm in width by
 420mm in height (C size) when plotted at a scale of 1:500.

LEGEND

- ⊕ Indicates control monument found
- ⊙ Indicates standard concrete post found
- ⊖ Indicates standard iron post found
- Indicates standard iron post placed

Grid bearings are derived from observations
 between control monuments 5656 and 5657,
 Integrated Survey Area No.1, Surrey B.C.,
 NAD83 (CSRS).

This plan shows horizontal ground-level
 distances unless otherwise specified.
 To compute grid distances, multiply
 ground-level distances by the average
 combined factor of 0.9999993 which
 has been derived from control monuments
 5656 and 5657.



DHALIWAL & ASSOCIATES
 LAND SURVEYING INC.
 121 - 13140 80th Avenue
 Surrey, B.C.
 V3W 3E2
 (ph) 604 501-8188
 (fx) 604 501-8189
 FILE : 1201124-R01.DWG

THIS PLAN LIES WITHIN THE GREATER VANCOUVER REGIONAL DISTRICT

The field survey represented by this plan was
 completed on the 20th day of December, 2012.
 Lavin Levac, BCLS