

CITY OF SURREY

BY-LAW NO. 17770

A by-law to close Park dedicated by a Subdivision Plan in
the City of Surrey.

.....

WHEREAS pursuant to Section 27 of the *Community Charter*, SBC, 2003, c. 26, as amended, the Council of the City of Surrey may by by-law dispose of all or part of dedicated parkland vested in a municipality provided that the proceeds of the disposal are to be placed to the credit of the park land acquisition reserve fund.

NOW, THEREFORE, the Council of the City of Surrey, ENACTS AS FOLLOWS:

1. The Council hereby authorizes the disposal of all that portion of District Lot 121 Group 2 New Westminster District Plan LMP14011 shown as dedicated Park and included within the heavy bold outline on Reference Plan EPP1680 attached hereto, prepared by Michael J. Seitz, B.C.L.S. on the 14th day of January, 2011, and described as follows:

That portion of Park dedicated by Plan LMP14011 containing 0.308 hectare and called Closed Park.

2. The Council hereby authorizes that instead of taking land in exchange of the park disposal, the proceeds of the disposal be placed to the credit of the reserve fund established under Section 188 of the *Community Charter*, SBC, 2003, c. 26, as amended, for the purpose of acquiring park lands.
3. As required by Section 84 of the *Community Charter*, SBC, 2003, c. 26, as amended, an alternative approval process was provided in accordance with Section 86.
4. This By-law may be cited as "Surrey Park Closure By-law, 2013, No. 17770".

PASSED FIRST READING on the 14th day of January, 2013.


PASSED SECOND READING on the 14th day of January, 2013.

PASSED THIRD READING on the 14th day of January, 2013.

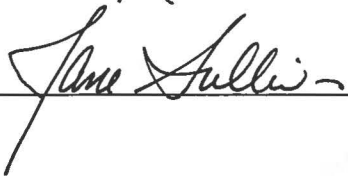
NOTICE OF INTENTION ADVERTISED in the SURREY LEADER AND PEACE ARCH NEWS on the 17th and 24th day of January, 2013.

RECEIVED APPROVAL OF THE ELECTORS on the 25th day of February, 2013.

RECONSIDERED AND FINALLY ADOPTED, signed by the Mayor and Clerk, and sealed with the Corporate Seal on 11th day of March, 2013.



Acting
MAYOR



CLERK

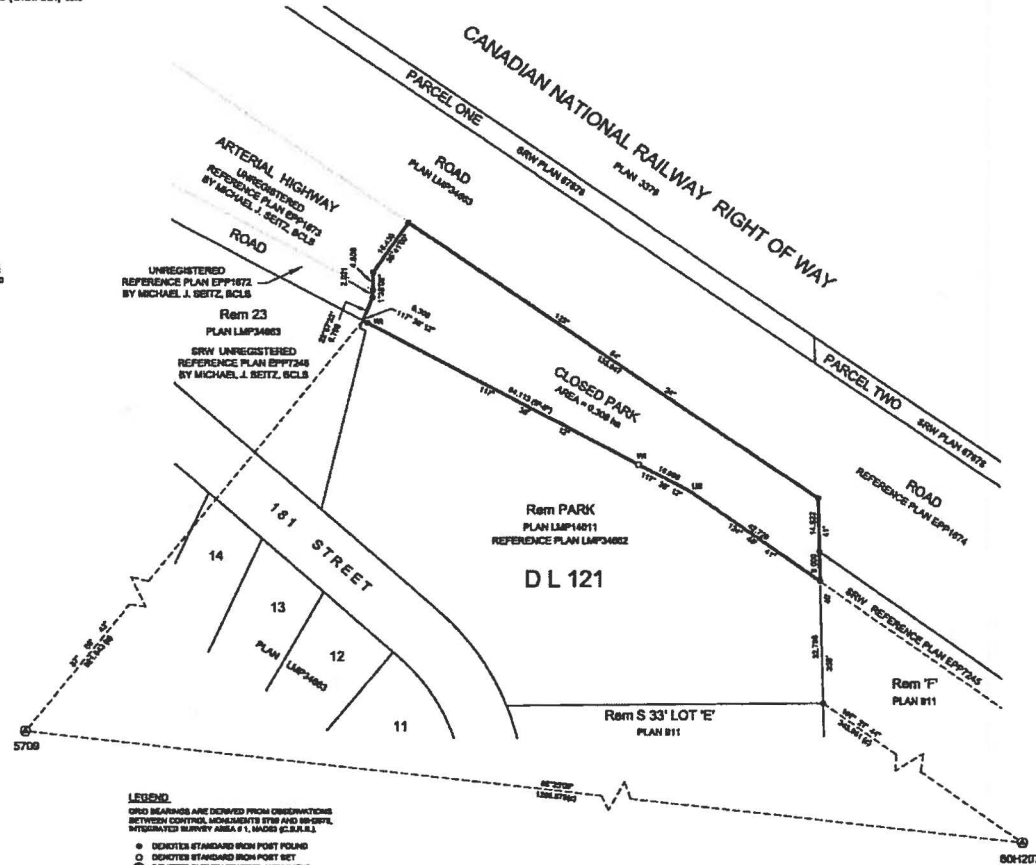
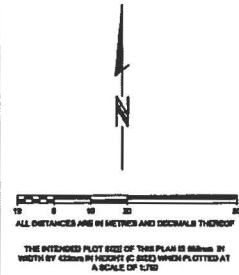


REFERENCE PLAN TO ACCOMPANY BYLAW No. 17770 OF THE CITY OF SURREY CLOSING AND REMOVING DESIGNATION OF PARK, DEDICATED AS PARK ON PLAN LMP14011, DISTRICT LOT 121, GROUP 2, NEW WESTMINSTER DISTRICT, PLAN LMP14011.

PLAN EPP1680

PURSUANT TO SECTION 27 OF THE COMMUNITY CHARTER AND SECTION 120 OF THE LAND TITLE ACT.

INTEGRATED SURVEY AREA No.1, NAD 83 (C.S.F.S.)
MUNICIPALITY OF SURREY
BCGS 92G.017



LEGEND
 GRID BEARINGS ARE DERIVED FROM OBSERVATIONS BETWEEN CONTROL MONUMENTS SRW AND SRW/PT. INTEGRATED SURVEY AREA # 1, NAD83 (C.S.F.S.)
 ● DENOTES STANDARD IRON POST FOUND
 ○ DENOTES STANDARD IRON POST SET
 ⊕ DENOTES SURVEY CONTROL MONUMENT
 ⊗ DENOTES UNDETECTABLE TO POST
 THIS PLAN SHOWS HORIZONTAL GROUND-LEVEL DISTANCES EXCEPT WHERE OTHERWISE NOTED. TO COMPUTE GRID DISTANCES, USE FULLY GROUND-LEVEL DISTANCES BY CORRECTION FACTOR 0.99992.
 THIS PLAN SHOWS ONE OR MORE WETNESS POINTS WHICH ARE SET ALONG THE PERIPHERY OF THE PROPERTY BOUNDARY UNLESS OTHERWISE NOTED.

BEHNETT LAND SURVEYING LTD.
 S.L.C. LAND SURVEYORS
 8201 - 278 FELL AVENUE
 NEWTON WARDEN, B.C.
 V3P 3K3
 TEL: 604-882-4888
 FAX: 604-882-4888
 www.bccollege.com
 JOB DIRECTORY: W4781215484.00 - Sidway Program Parcel Heights Survey Section
 Project: 12404.00 - Downtown
 PROJECT: 12404.00 - Legal (Planning)
 DRAWING FILE: R13484.20.dwg P4 602_602.13 (MULTIPLAN)

THIS PLAN LIES WITHIN THE GREATER VINCOWEN REGIONAL DISTRICT
 THIS FIELD SURVEY REPRESENTED BY THIS PLAN WAS COMPLETED BY MICHAEL J. BETZ, S.L.C., ON THE 14th DAY OF JANUARY, 2011