

CITY OF SURREY

BY-LAW NO. 17520

A by-law to close Park dedicated by a Subdivision Plan in
the City of Surrey.

.....

WHEREAS

- A. Pursuant to Section 27 of the *Community Charter*, SBC, 2003, c. 26, as amended, the Council of the City of Surrey may by by-law dispose of all or part of dedicated parkland vested in a municipality provided that the proceeds of the disposal are to be placed to the credit of the park land acquisition reserve fund.

NOW, THEREFORE, the Council of the City of Surrey, in open meeting assembled, ENACTS AS FOLLOWS:

1. The Council hereby authorizes the disposal of all that portion of park lying in District Lot 155, Group 2, New Westminster District, shown outlined in heavy black line and labelled PCL "A" on the Reference Plan attached hereto, duly signed by the Mayor and Clerk, prepared by Kenneth W. Schuurman, B.C.L.S. on the 17th day of November 2011, as described as follows:

That portion of park dedicated by British Columbia plan seventeen thousand nine hundred eleven (BCP17911) shown as parcel 'A' containing one hundred eighty-five and 4 tenths (185.4) square metres.

2. The Council hereby authorizes that instead of taking land in exchange of the park disposal, the proceeds of the disposal be placed to the credit of the reserve fund established under Section 188 of the *Community Charter*, SBC, 2003, c. 26, as amended, for the purpose of acquiring park lands.
3. As required by Section 84 of the *Community Charter*, SBC, 2003, c. 26, as amended, an alternative approval process was provided in accordance with Section 86.

4. This By-law may be cited as "Surrey Park Closure By-law, 2011, No. 17520".

PASSED FIRST READING on the 28th day of November, 2011.

PASSED SECOND READING on the 28th day of November, 2011.

PASSED THIRD READING on the 28th day of November, 2012.

NOTICE OF INTENTION ADVERTISED in the SURREY LEADER AND PEACE ARCH NEWS on the 1st and 8th day of December, 2011.

RECEIVED APPROVAL OF THE ELECTORS on the 24th day of January, 2012.

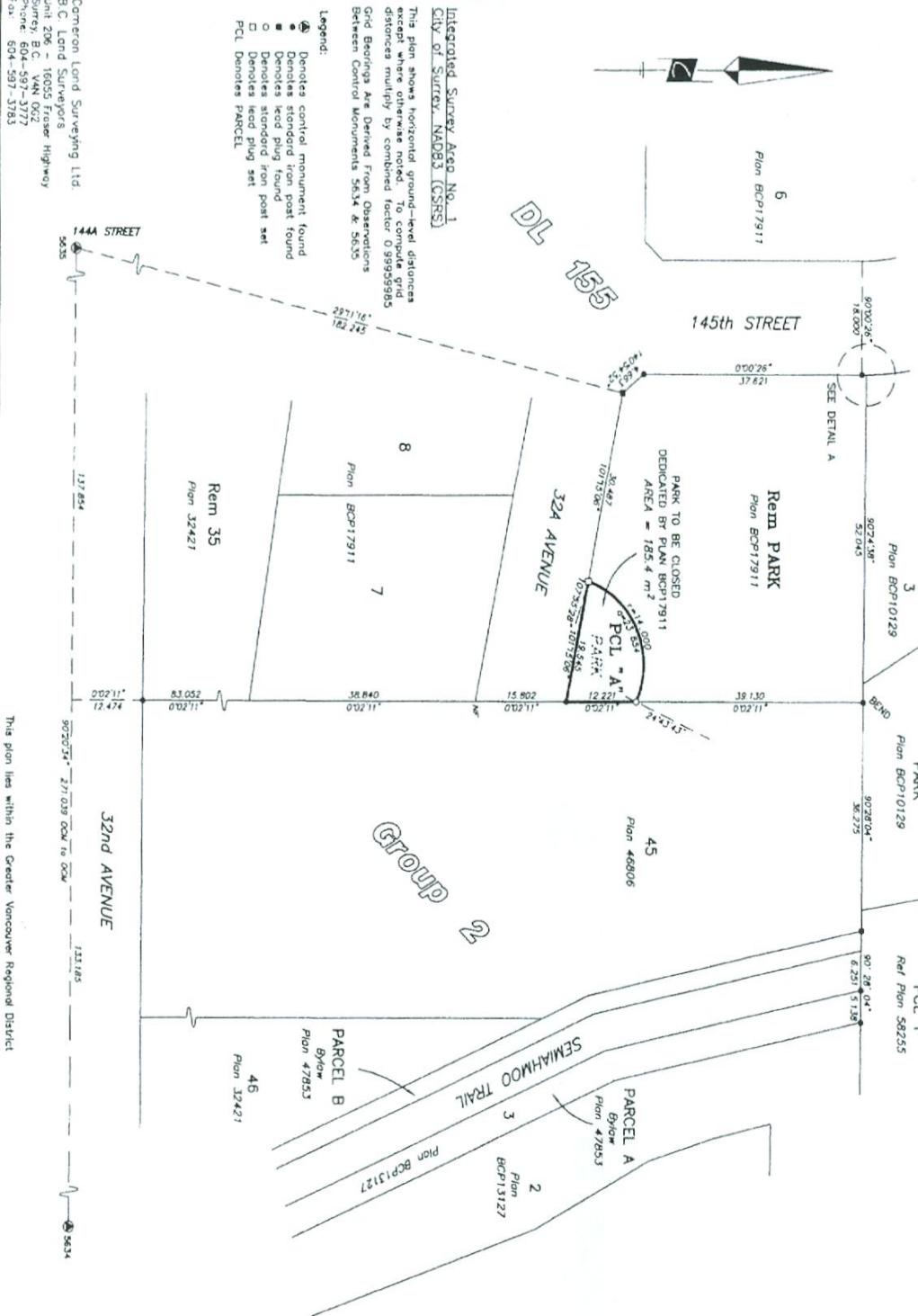
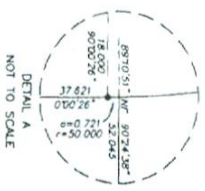
RECONSIDERED AND FINALLY ADOPTED, signed by the Mayor and Clerk, and sealed with the Corporate Seal on 6th day of February, 2012.

_____MAYOR

_____CLERK

REFERENCE PLAN TO ACCOMPANY CITY OF SURREY PARK CLOSING BYLAW NUMBER 17520
 OF A PORTION OF PARK LYING IN DISTRICT LOT 155, GROUP 2, NEW WESTMINSTER DISTRICT,
 DEDICATED BY PLAN BCP17911

City of Surrey BCCS 920.006
 Pursuant to Section 120 Land Title Act
 and Section 27 of the Community Charter



Plan BCP
 Deposited in the Land Title Office of
 New Westminster, B.C. this
 day of _____, 2012
 Deputy Registrar

Ref. No. _____

Owner: City of Surrey
 LATOR: Donna Wells
 City Clerk: Jane Sullivan
 Witnesses as to the signature of the City Clerk
 (SIGN AND PRINT NAME)
 Address of Witness
 Occupation of Witness

I, Kenneth W. Schummon, a British Columbia Land Surveyor, do hereby certify that I am a duly qualified and licensed surveyor, and that I have personally supervised the survey and plan are correct. The field survey was completed on the 18th day of November, 2011. This plan was filed under #128999 on the 17th day of November, 2011.

Kenneth W. Schummon, B.C.L.S.
 Kenneth W. Schummon, B.C.L.S.
 Fik: 4784-BCT

Integrated Survey Area No. 1
 City of Surrey, NA083 (CSRS)
 This plan shows horizontal ground-level distances
 measured, where otherwise noted, to compute grid
 distances multiplying by combined factor 0.999999983
 Grid Bearings are Derived From Observations
 Between Control Monuments 5634 & 5635

Legend:
 ▲ Denotes control monument found
 ● Denotes standard iron post found
 ■ Denotes lead plug found
 □ Denotes standard iron post set
 ○ Denotes lead plug set
 PCL Denotes PARCEL

Cameron Land Surveying Ltd
 B.C. Land Surveyors
 Unit 206 - 16055 Fraser Highway
 Surrey, B.C. V4N 0X2
 Phone: 604-597-3777
 Fax: 604-597-3783

This plan lies within the Greater Vancouver Regional District