

CITY OF SURREY

BY-LAW NO. 16412

A by-law to close park land in the City of Surrey that has been dedicated by a Subdivision Plan registered in the Land Title Office and which title has been vested in the City of Surrey.

.....

WHEREAS

- A. Pursuant to Section 27 of the *Community Charter*, SBC, 2003, Chapter 26, the Council of the City of Surrey may by by-law dispose of all or part of the land vested in a municipality by subdivision in exchange for other land suitable for a park or public square; and
- B. Pursuant to Section 27, Subsection 2 of the *Community Charter*, SBC, 2003, Chapter 26, a by-law under Subsection 1 may provide that instead of taking land in exchange, the proceeds of the disposal are to be placed to the credit of a reserve fund under section 188(2) (b) established for the purpose of acquiring park lands.

NOW, THEREFORE, the Council of the City of Surrey, in open meeting assembled, ENACTS AS FOLLOWS:

- 1. The Council hereby authorizes the disposal of all and singular that certain portions of Park lying in Section 10, Township 2, New Westminster District, shown outlined in heavy black outline on a Reference Plan attached hereto and forming part of this by-law, certified correct by Colin Burrige, B.C.L.S. on the 19th day of January, 2006, and more particularly described as follows:

That portion of park dedicated on Plan LMP1123, called Parcel "A" and containing 482.8 square metres, and civically described as 14482 - 57 Avenue.

2. The Council hereby authorizes that instead of taking land in exchange of the Park disposal, the proceeds of the disposal be placed to the credit of the reserve fund under Part 13 of the *Local Government Act*, R.S.B.C. 1996, c.323, as amended, established for the purpose of acquiring park lands.
3. A Counter Petition opportunity was provided in accordance with Section 305.2, Subsection 3 of the *Local Government Act*, R.S.B.C. 1996, c.323, as amended.
4. This By-law may be cited as "Surrey Park Closure By-law, 2007, No. 16412.

PASSED THREE READINGS on the 23rd day of July, 2007.

NOTICE OF INTENTION

ADVERTISED on the 27th day of July and 3rd day of August, 2007, in the SURREY NOW Community newspaper.

RECONSIDERED AND FINALLY ADOPTED, signed by the Mayor and Clerk, and sealed with the Corporate Seal on the 17th day of September, 2007.

_____MAYOR

_____CLERK

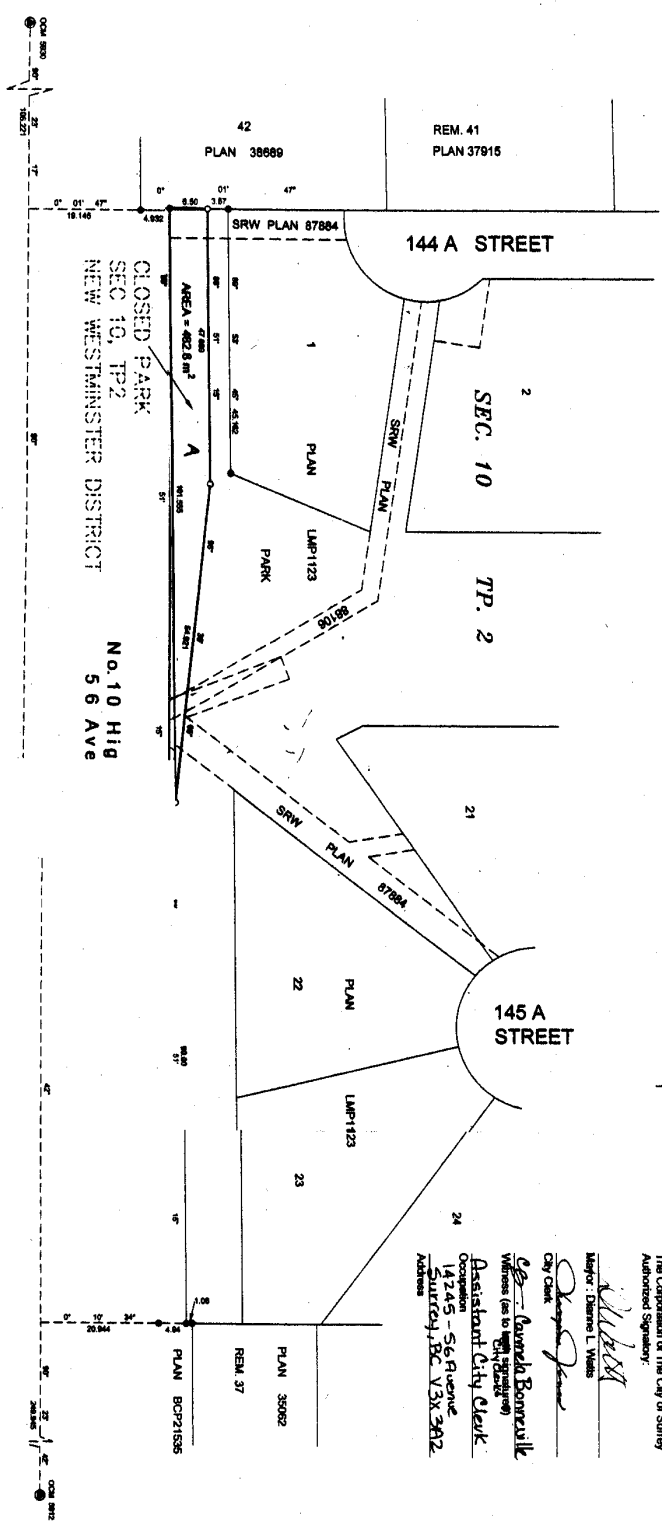
**REFERENCE PLAN TO ACCOMPANY CORPORATION OF
THE CITY OF SURREY PARK CLOSING BYLAW No. 1492
OF PART OF PARK DEDICATED BY PLAN LMP1123
SECTION 10, TOWNSHIP 2,
NEW WESTMINSTER DISTRICT**

Pursuant to Section 27 of the Community Charter
B.C.S. 2006 016

SCALE 1:500 meters
ALL DISTANCES ARE IN METERS AND DECIMALS THEREOF

LEGEND
 ● Indicates standard from post found
 ○ Indicates standard from post placed
 ⊙ Indicates control monument found

INTEGRATED SURVEY AREA No. 1 SURVEY
 THIS PLAN SHOWS GROUND LEVEL MEASURED DISTANCES
 AND BEARINGS (MEASUREMENTS MADE BY THE SURVEYOR
 AND BEARINGS ARE MADE TO CENSUS DERIVED FROM
 CONTROL MONUMENTS 5000 AND 5012



PLAN BCP _____

Deposited in the Land Title Office at New Westminster, B.C.
 This _____ day of _____, 2006.

Deputy Registrar

The Corporation of The City of Surrey
 Authorized Signatory:

Mayor: Darlene L. Viles

City Clerk

Angela Bonnyville
 Assistant City Clerk

14245 - 56 Avenue
 Surrey, BC V3X 3R2
 Address

I, COLIN BURRIDGE, British Columbia Land Surveyor,
 of Coquitlam, in British Columbia, certify that I was
 present at and personally supervised the survey
 represented by this plan. The survey was completed and plan
 on the 18th day of January, 2006. This plan was
 completed and checked, and the checklist filed under
 #43444 on the 27th day of January, 2006.

Colin Burridge B.C.L.S.

COLIN BURRIDGE LAND SURVEYING
 and GEOMETRICS LTD.
 421-1300 COQUITLAM STREET
 COQUITLAM, B.C. V3R 5A6
 Phone: (604) 271-4888
 Fax: (604) 271-4822
 Web: www.colinburridge.com

THIS PLAN LIES WITHIN
 THE GREATER VANCOUVER REGIONAL DISTRICT AND THE