

CITY OF SURREY

BY-LAW NO. 13994

An Expropriation by-law for the purpose of acquiring a Statutory
Right-of-Way

.....

WHEREAS the Council of the City of Surrey has found it necessary to acquire the within
described property for the purpose of Statutory Right-of-Way;

AND WHEREAS pursuant to Section 527(1) of the *Municipal Act*, R.S.B.C. 1996, c. 323, as
amended, the City Council may by by-law authorize the widening of a highway or any portion of
a highway;

AND WHEREAS pursuant to Section 309 of the *Municipal Act*, R.S.B.C. 1996, c.323, as
amended, the City Council may acquire property by expropriation and have free entry thereon;

NOW, THEREFORE, the Council of the City of Surrey, in open meeting assembled, ENACTS
AS FOLLOWS:

1. Pursuant to Section 309 of the *Municipal Act*, R.S.B.C. 1996, c. 323, as amended, the
Council of the City of Surrey hereby authorizes the expropriation of a temporary
Statutory Right-of-Way for the purpose of full, free, and unrestricted access, ingress,
egress and passage for vehicles, equipment and workers to clear and for temporary access
and construction for road, gas and hydro works in, over, upon and under ALL AND
SINGULAR that certain parcel or tract of land premises situate, lying and being in the
City of Surrey in the Province of British Columbia and being:

Parcel Identifier: 011-375-639

That portion of West Half Lot 2 Except: Part on Statutory Right of Way
Plan 53884 Section 30 Township 2 New Westminster District Plan 8630
outlined on Statutory Right-of-Way Plan LMP45370 containing 68 square
metres.

(Portion of 8768 - 120 Street)

2. The Mayor and Clerk are hereby authorized to sign and seal all documents necessary and incidental to effect such expropriation.
3. This By-law may be cited for all purposes as "Portion of 8768 - 120 Street Expropriation By-law, 2000, No. 13994".
4. This By-law comes in to full force and effect on the date of final adoption.

PASSED THREE READINGS on the 3rd day of April, 2000.

RECONSIDERED AND FINALLY ADOPTED, signed by the Mayor and Clerk, and sealed with the Corporate Seal on the 10th day of April, 2000.

_____ MAYOR

_____ CLERK

h:\by-laws\adopted\2000\clk13994.blw

STATIONARY RIGHT OF WAY PLAN OF PORTIONS OF SECTION 30
 TOWNSHIP 2 & NEW WESTMINSTER DISTRICT
 B.C. S. 926.018

DEPARTMENT OF LAND TITLE ACT
 N.L.S.
 88 AVE.

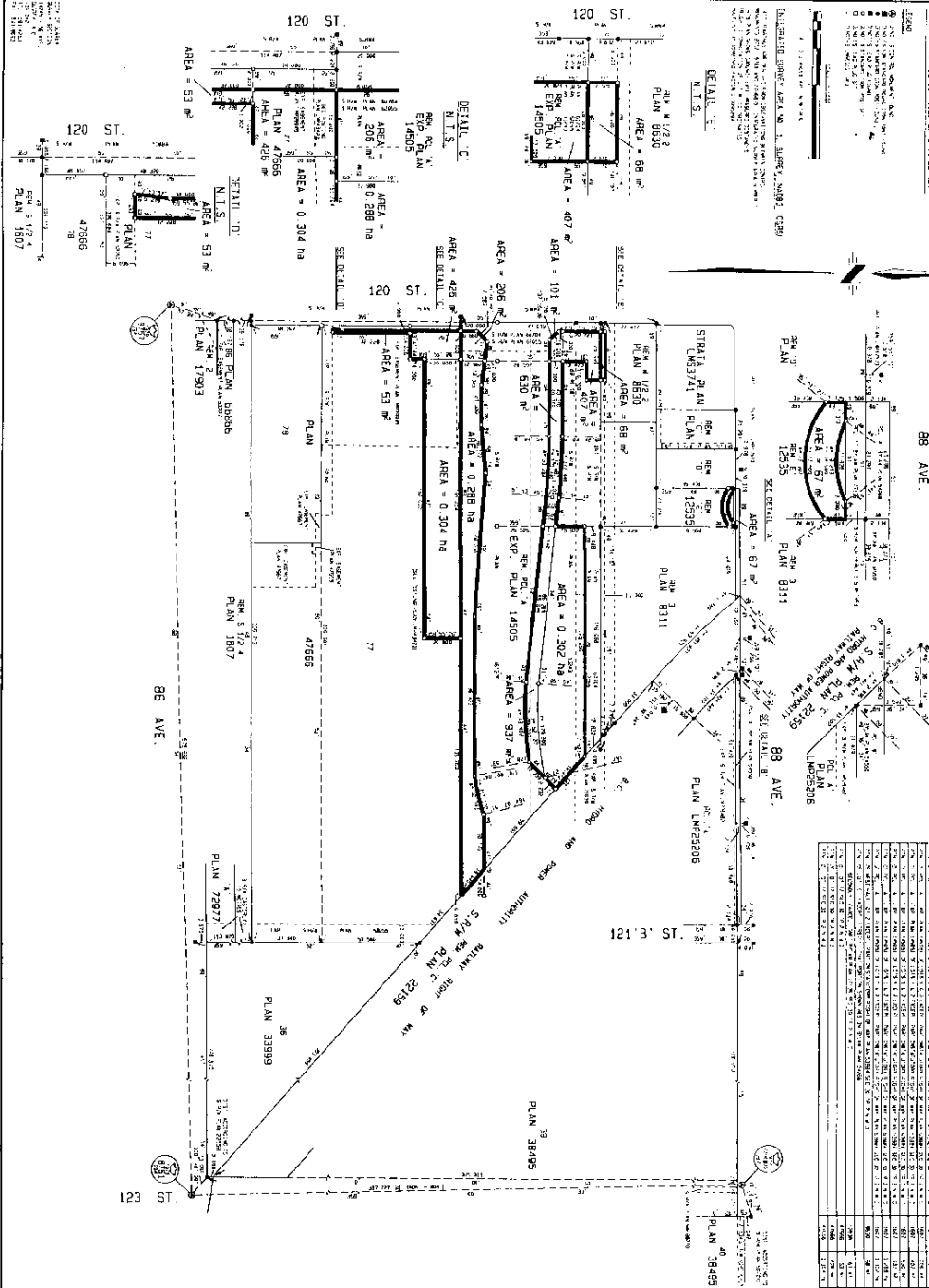
DETAILED B.
 N.L.S.
 88 AVE.

PLAN LMP 45370

PREPARED IN THE LAND TITLE OFFICE
 AT NEW WESTMINSTER 2002

DESCRIPTION
 THE PLAN, THE STATION, THE SERVICE
 AND/OR THE SECTION, AND THE ACT

NO.	DESCRIPTION	AREA	PLAN	DATE
1	STRAITA PLAN LMS3741	AREA = 68 sq	PLAN 14505	2002
2	PLAN 8311	AREA = 101 sq	PLAN 14505	2002
3	PLAN 8333	AREA = 67 sq	PLAN 14505	2002
4	PLAN 8249	AREA = 317 sq	PLAN 14505	2002
5	PLAN 8206	AREA = 53 sq	PLAN 14505	2002
6	PLAN 8206	AREA = 53 sq	PLAN 14505	2002
7	PLAN 8206	AREA = 53 sq	PLAN 14505	2002
8	PLAN 8206	AREA = 53 sq	PLAN 14505	2002
9	PLAN 8206	AREA = 53 sq	PLAN 14505	2002
10	PLAN 8206	AREA = 53 sq	PLAN 14505	2002
11	PLAN 8206	AREA = 53 sq	PLAN 14505	2002
12	PLAN 8206	AREA = 53 sq	PLAN 14505	2002
13	PLAN 8206	AREA = 53 sq	PLAN 14505	2002
14	PLAN 8206	AREA = 53 sq	PLAN 14505	2002
15	PLAN 8206	AREA = 53 sq	PLAN 14505	2002
16	PLAN 8206	AREA = 53 sq	PLAN 14505	2002
17	PLAN 8206	AREA = 53 sq	PLAN 14505	2002
18	PLAN 8206	AREA = 53 sq	PLAN 14505	2002
19	PLAN 8206	AREA = 53 sq	PLAN 14505	2002
20	PLAN 8206	AREA = 53 sq	PLAN 14505	2002
21	PLAN 8206	AREA = 53 sq	PLAN 14505	2002
22	PLAN 8206	AREA = 53 sq	PLAN 14505	2002
23	PLAN 8206	AREA = 53 sq	PLAN 14505	2002
24	PLAN 8206	AREA = 53 sq	PLAN 14505	2002
25	PLAN 8206	AREA = 53 sq	PLAN 14505	2002
26	PLAN 8206	AREA = 53 sq	PLAN 14505	2002
27	PLAN 8206	AREA = 53 sq	PLAN 14505	2002
28	PLAN 8206	AREA = 53 sq	PLAN 14505	2002
29	PLAN 8206	AREA = 53 sq	PLAN 14505	2002
30	PLAN 8206	AREA = 53 sq	PLAN 14505	2002
31	PLAN 8206	AREA = 53 sq	PLAN 14505	2002
32	PLAN 8206	AREA = 53 sq	PLAN 14505	2002
33	PLAN 8206	AREA = 53 sq	PLAN 14505	2002
34	PLAN 8206	AREA = 53 sq	PLAN 14505	2002
35	PLAN 8206	AREA = 53 sq	PLAN 14505	2002
36	PLAN 8206	AREA = 53 sq	PLAN 14505	2002
37	PLAN 8206	AREA = 53 sq	PLAN 14505	2002
38	PLAN 8206	AREA = 53 sq	PLAN 14505	2002
39	PLAN 8206	AREA = 53 sq	PLAN 14505	2002
40	PLAN 8206	AREA = 53 sq	PLAN 14505	2002
41	PLAN 8206	AREA = 53 sq	PLAN 14505	2002
42	PLAN 8206	AREA = 53 sq	PLAN 14505	2002
43	PLAN 8206	AREA = 53 sq	PLAN 14505	2002
44	PLAN 8206	AREA = 53 sq	PLAN 14505	2002
45	PLAN 8206	AREA = 53 sq	PLAN 14505	2002
46	PLAN 8206	AREA = 53 sq	PLAN 14505	2002
47	PLAN 8206	AREA = 53 sq	PLAN 14505	2002
48	PLAN 8206	AREA = 53 sq	PLAN 14505	2002
49	PLAN 8206	AREA = 53 sq	PLAN 14505	2002
50	PLAN 8206	AREA = 53 sq	PLAN 14505	2002
51	PLAN 8206	AREA = 53 sq	PLAN 14505	2002
52	PLAN 8206	AREA = 53 sq	PLAN 14505	2002
53	PLAN 8206	AREA = 53 sq	PLAN 14505	2002
54	PLAN 8206	AREA = 53 sq	PLAN 14505	2002
55	PLAN 8206	AREA = 53 sq	PLAN 14505	2002
56	PLAN 8206	AREA = 53 sq	PLAN 14505	2002
57	PLAN 8206	AREA = 53 sq	PLAN 14505	2002
58	PLAN 8206	AREA = 53 sq	PLAN 14505	2002
59	PLAN 8206	AREA = 53 sq	PLAN 14505	2002
60	PLAN 8206	AREA = 53 sq	PLAN 14505	2002
61	PLAN 8206	AREA = 53 sq	PLAN 14505	2002
62	PLAN 8206	AREA = 53 sq	PLAN 14505	2002
63	PLAN 8206	AREA = 53 sq	PLAN 14505	2002
64	PLAN 8206	AREA = 53 sq	PLAN 14505	2002
65	PLAN 8206	AREA = 53 sq	PLAN 14505	2002
66	PLAN 8206	AREA = 53 sq	PLAN 14505	2002
67	PLAN 8206	AREA = 53 sq	PLAN 14505	2002
68	PLAN 8206	AREA = 53 sq	PLAN 14505	2002
69	PLAN 8206	AREA = 53 sq	PLAN 14505	2002
70	PLAN 8206	AREA = 53 sq	PLAN 14505	2002
71	PLAN 8206	AREA = 53 sq	PLAN 14505	2002
72	PLAN 8206	AREA = 53 sq	PLAN 14505	2002
73	PLAN 8206	AREA = 53 sq	PLAN 14505	2002
74	PLAN 8206	AREA = 53 sq	PLAN 14505	2002
75	PLAN 8206	AREA = 53 sq	PLAN 14505	2002
76	PLAN 8206	AREA = 53 sq	PLAN 14505	2002
77	PLAN 8206	AREA = 53 sq	PLAN 14505	2002
78	PLAN 8206	AREA = 53 sq	PLAN 14505	2002
79	PLAN 8206	AREA = 53 sq	PLAN 14505	2002
80	PLAN 8206	AREA = 53 sq	PLAN 14505	2002
81	PLAN 8206	AREA = 53 sq	PLAN 14505	2002
82	PLAN 8206	AREA = 53 sq	PLAN 14505	2002
83	PLAN 8206	AREA = 53 sq	PLAN 14505	2002
84	PLAN 8206	AREA = 53 sq	PLAN 14505	2002
85	PLAN 8206	AREA = 53 sq	PLAN 14505	2002
86	PLAN 8206	AREA = 53 sq	PLAN 14505	2002
87	PLAN 8206	AREA = 53 sq	PLAN 14505	2002
88	PLAN 8206	AREA = 53 sq	PLAN 14505	2002
89	PLAN 8206	AREA = 53 sq	PLAN 14505	2002
90	PLAN 8206	AREA = 53 sq	PLAN 14505	2002
91	PLAN 8206	AREA = 53 sq	PLAN 14505	2002
92	PLAN 8206	AREA = 53 sq	PLAN 14505	2002
93	PLAN 8206	AREA = 53 sq	PLAN 14505	2002
94	PLAN 8206	AREA = 53 sq	PLAN 14505	2002
95	PLAN 8206	AREA = 53 sq	PLAN 14505	2002
96	PLAN 8206	AREA = 53 sq	PLAN 14505	2002
97	PLAN 8206	AREA = 53 sq	PLAN 14505	2002
98	PLAN 8206	AREA = 53 sq	PLAN 14505	2002
99	PLAN 8206	AREA = 53 sq	PLAN 14505	2002
100	PLAN 8206	AREA = 53 sq	PLAN 14505	2002



1. IN THE PLAN, A REFERENCE TO AN AREA OR AN AREA OF LAND IS TO BE UNDERSTOOD TO REFER TO THE AREA OR AREA OF LAND AS SHOWN ON THE PLAN AND NOT TO THE AREA OR AREA OF LAND AS SHOWN ON THE GROUND. THE AREA OR AREA OF LAND AS SHOWN ON THE GROUND MAY BE DIFFERENT FROM THE AREA OR AREA OF LAND AS SHOWN ON THE PLAN.

2. THE PLAN, THE STATION, THE SERVICE AND/OR THE SECTION, AND THE ACT

B.C.L.S.
 2002-02-27