

CITY OF SURREY

BY-LAW NO. 13991

An Expropriation by-law for the purpose of acquiring a Statutory
Right-of-Way

.....

WHEREAS the Council of the City of Surrey has found it necessary to acquire the within
described property for the purpose of Statutory Right-of-Way;

AND WHEREAS pursuant to Section 527(1) of the *Municipal Act*, R.S.B.C. 1996, c. 323, as
amended, the City Council may by by-law authorize the widening of a highway or any portion of
a highway;

AND WHEREAS pursuant to Section 309 of the *Municipal Act*, R.S.B.C. 1996, c.323, as
amended, the City Council may acquire property by expropriation and have free entry thereon;

NOW, THEREFORE, the Council of the City of Surrey, in open meeting assembled, ENACTS
AS FOLLOWS:

1. Pursuant to Section 309 of the *Municipal Act*, R.S.B.C. 1996, c. 323, as amended, the
Council of the City of Surrey hereby authorizes the expropriation of a temporary
Statutory Right-of-Way for the purpose of full, free, and unrestricted access, ingress,
egress and passage for vehicles, equipment and workers to clear and for temporary access
and construction for road, gas and hydro works in, over, upon and under ALL AND
SINGULAR that certain parcel or tract of land premises situate, lying and being in the
City of Surrey in the Province of British Columbia and being:

Parcel Identifier: 001-927-779
That portion of Parcel "A" (Explanatory Plan 14505) of Lots 1 and 2
Except: Part on Statutory Right-of-Way Plan 53884; Section 30
Township 2 New Westminster District Plan 1607 outlined on Statutory
Right-of-Way Plan LMP45370 containing 0.288 hectares.

(Portion of 8748 - 120 Street)

2. The Mayor and Clerk are hereby authorized to sign and seal all documents necessary and incidental to effect such expropriation.
3. This By-law may be cited for all purposes as "Portion of 8748 - 120 Street Expropriation By-law, 2000, No. 13991".
4. This By-law comes in to full force and effect on the date of final adoption.

PASSED THREE READINGS on the 3rd day of April, 2000.

RECONSIDERED AND FINALLY ADOPTED, signed by the Mayor and Clerk, and sealed with the Corporate Seal on the 10th day of April, 2000.

_____MAYOR

_____CLERK

h:\by-laws\adopted\2000\clk13991.blw

STATIONARY RIGHT OF WAY PLAN OF PORTIONS OF SECTION 30
 TOWNSHIP 4 NORTH, RANGE 12 WEST, COUNTY OF
 B. C. S. 928, 018

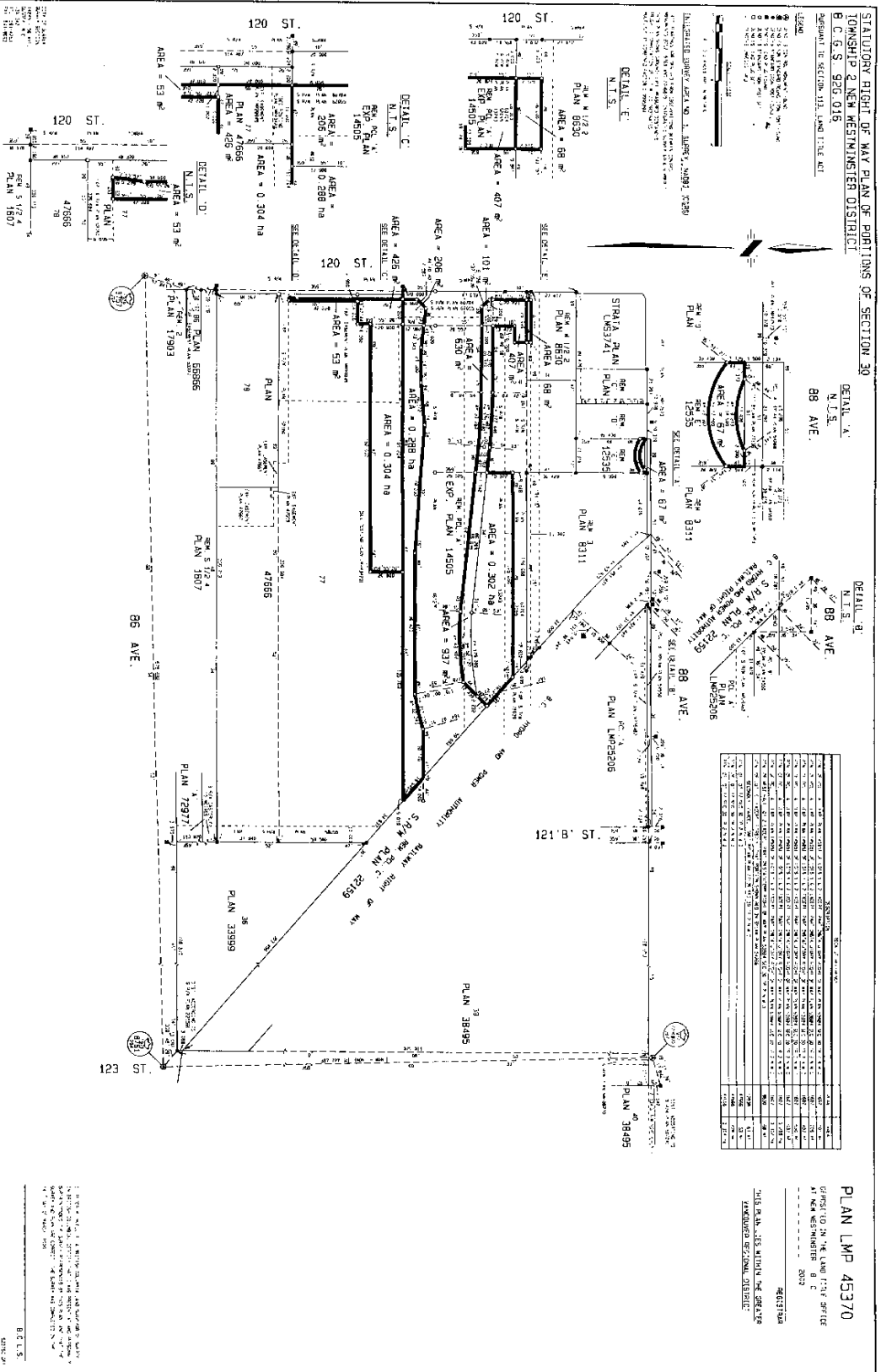
DEPARTMENT OF TRANSPORTATION
 N.T.S.

DETAIL - A
 N.T.S.
 88 AVE.

NO.	DESCRIPTION	AREA	PLAN
1	AREA 1	407 sq. ft.	PLAN 14505
2	AREA 2	101 sq. ft.	PLAN 14505
3	AREA 3	206 sq. ft.	PLAN 14505
4	AREA 4	428 sq. ft.	PLAN 14505
5	AREA 5	53 sq. ft.	PLAN 14505
6	AREA 6	537 sq. ft.	PLAN 14505
7	AREA 7	302 sq. ft.	PLAN 14505
8	AREA 8	304 sq. ft.	PLAN 14505
9	AREA 9	304 sq. ft.	PLAN 14505
10	AREA 10	888 sq. ft.	PLAN 14505
11	AREA 11	428 sq. ft.	PLAN 14505
12	AREA 12	53 sq. ft.	PLAN 14505
13	AREA 13	53 sq. ft.	PLAN 14505
14	AREA 14	53 sq. ft.	PLAN 14505
15	AREA 15	53 sq. ft.	PLAN 14505
16	AREA 16	53 sq. ft.	PLAN 14505
17	AREA 17	53 sq. ft.	PLAN 14505
18	AREA 18	53 sq. ft.	PLAN 14505
19	AREA 19	53 sq. ft.	PLAN 14505
20	AREA 20	53 sq. ft.	PLAN 14505
21	AREA 21	53 sq. ft.	PLAN 14505
22	AREA 22	53 sq. ft.	PLAN 14505
23	AREA 23	53 sq. ft.	PLAN 14505
24	AREA 24	53 sq. ft.	PLAN 14505
25	AREA 25	53 sq. ft.	PLAN 14505
26	AREA 26	53 sq. ft.	PLAN 14505
27	AREA 27	53 sq. ft.	PLAN 14505
28	AREA 28	53 sq. ft.	PLAN 14505
29	AREA 29	53 sq. ft.	PLAN 14505
30	AREA 30	53 sq. ft.	PLAN 14505
31	AREA 31	53 sq. ft.	PLAN 14505
32	AREA 32	53 sq. ft.	PLAN 14505
33	AREA 33	53 sq. ft.	PLAN 14505
34	AREA 34	53 sq. ft.	PLAN 14505
35	AREA 35	53 sq. ft.	PLAN 14505
36	AREA 36	53 sq. ft.	PLAN 14505
37	AREA 37	53 sq. ft.	PLAN 14505
38	AREA 38	53 sq. ft.	PLAN 14505
39	AREA 39	53 sq. ft.	PLAN 14505
40	AREA 40	53 sq. ft.	PLAN 14505
41	AREA 41	53 sq. ft.	PLAN 14505
42	AREA 42	53 sq. ft.	PLAN 14505
43	AREA 43	53 sq. ft.	PLAN 14505
44	AREA 44	53 sq. ft.	PLAN 14505
45	AREA 45	53 sq. ft.	PLAN 14505
46	AREA 46	53 sq. ft.	PLAN 14505
47	AREA 47	53 sq. ft.	PLAN 14505
48	AREA 48	53 sq. ft.	PLAN 14505
49	AREA 49	53 sq. ft.	PLAN 14505
50	AREA 50	53 sq. ft.	PLAN 14505
51	AREA 51	53 sq. ft.	PLAN 14505
52	AREA 52	53 sq. ft.	PLAN 14505
53	AREA 53	53 sq. ft.	PLAN 14505
54	AREA 54	53 sq. ft.	PLAN 14505
55	AREA 55	53 sq. ft.	PLAN 14505
56	AREA 56	53 sq. ft.	PLAN 14505
57	AREA 57	53 sq. ft.	PLAN 14505
58	AREA 58	53 sq. ft.	PLAN 14505
59	AREA 59	53 sq. ft.	PLAN 14505
60	AREA 60	53 sq. ft.	PLAN 14505
61	AREA 61	53 sq. ft.	PLAN 14505
62	AREA 62	53 sq. ft.	PLAN 14505
63	AREA 63	53 sq. ft.	PLAN 14505
64	AREA 64	53 sq. ft.	PLAN 14505
65	AREA 65	53 sq. ft.	PLAN 14505
66	AREA 66	53 sq. ft.	PLAN 14505
67	AREA 67	53 sq. ft.	PLAN 14505
68	AREA 68	53 sq. ft.	PLAN 14505
69	AREA 69	53 sq. ft.	PLAN 14505
70	AREA 70	53 sq. ft.	PLAN 14505
71	AREA 71	53 sq. ft.	PLAN 14505
72	AREA 72	53 sq. ft.	PLAN 14505
73	AREA 73	53 sq. ft.	PLAN 14505
74	AREA 74	53 sq. ft.	PLAN 14505
75	AREA 75	53 sq. ft.	PLAN 14505
76	AREA 76	53 sq. ft.	PLAN 14505
77	AREA 77	53 sq. ft.	PLAN 14505
78	AREA 78	53 sq. ft.	PLAN 14505
79	AREA 79	53 sq. ft.	PLAN 14505
80	AREA 80	53 sq. ft.	PLAN 14505
81	AREA 81	53 sq. ft.	PLAN 14505
82	AREA 82	53 sq. ft.	PLAN 14505
83	AREA 83	53 sq. ft.	PLAN 14505
84	AREA 84	53 sq. ft.	PLAN 14505
85	AREA 85	53 sq. ft.	PLAN 14505
86	AREA 86	53 sq. ft.	PLAN 14505
87	AREA 87	53 sq. ft.	PLAN 14505
88	AREA 88	53 sq. ft.	PLAN 14505
89	AREA 89	53 sq. ft.	PLAN 14505
90	AREA 90	53 sq. ft.	PLAN 14505
91	AREA 91	53 sq. ft.	PLAN 14505
92	AREA 92	53 sq. ft.	PLAN 14505
93	AREA 93	53 sq. ft.	PLAN 14505
94	AREA 94	53 sq. ft.	PLAN 14505
95	AREA 95	53 sq. ft.	PLAN 14505
96	AREA 96	53 sq. ft.	PLAN 14505
97	AREA 97	53 sq. ft.	PLAN 14505
98	AREA 98	53 sq. ft.	PLAN 14505
99	AREA 99	53 sq. ft.	PLAN 14505
100	AREA 100	53 sq. ft.	PLAN 14505

PLAN LMP 45370

PREPARED IN THE LAND TITLE OFFICE
 AT NEW WESTMINSTER 2002
 REGISTRATION
 TITLE PLAN, THE DISTRICT OF COLUMBIA
 EXAMINED AND APPROVED



120 ST.
 PLAN 5 172 A
 PLAN 1807

120 ST.
 PLAN 17903
 PLAN 1807

85 AVE.
 PLAN 72977
 PLAN 33999

123 ST.
 PLAN 38495
 PLAN 72977

PLAN 14505
 PLAN 14505
 PLAN 14505

PLAN 14505
 PLAN 14505
 PLAN 14505

PLAN 14505
 PLAN 14505
 PLAN 14505

PLAN 14505
 PLAN 14505
 PLAN 14505

PLAN 14505
 PLAN 14505
 PLAN 14505

PLAN 14505
 PLAN 14505
 PLAN 14505

PLAN 14505
 PLAN 14505
 PLAN 14505

PLAN 14505
 PLAN 14505
 PLAN 14505