

CITY OF SURREY

BY-LAW NO. 13989

An Expropriation by-law for the purpose of acquiring a Statutory Right-of-Way.
.....

WHEREAS the Council of the City of Surrey has found it necessary to acquire the within described property for the purpose of Statutory Right-of-Way;

AND WHEREAS pursuant to Section 527(1) of the *Municipal Act*, R.S.B.C. 1996, c. 323, as amended, the City Council may by by-law authorize the widening of a highway or any portion of a highway;

AND WHEREAS pursuant to Section 309 of the *Municipal Act*, R.S.B.C. 1996, c.323, as amended, the City Council may acquire property by expropriation and have free entry thereon;

NOW, THEREFORE, the Council of the City of Surrey, in open meeting assembled, ENACTS AS FOLLOWS:

1. Pursuant to Section 309 of the *Municipal Act*, R.S.B.C. 1996, c. 323, as amended, the Council of the City of Surrey hereby authorizes the expropriation of a temporary Statutory Right-of-Way for the purpose of full, free, and unrestricted access, ingress, egress and passage for vehicles, equipment and workers to clear and for temporary access and construction for road, gas and hydro works in, over, upon and under ALL AND SINGULAR that certain parcel or tract of land premises situate, lying and being in the City of Surrey in the Province of British Columbia and being:

Parcel Identifier: 001-927-779
That portion of Parcel "A" (Explanatory Plan 14505) of Lots 1 and 2 Except: Part on Statutory Right-of-Way Plan 53884; Section 30 Township 2 New Westminster District Plan 1607 outlined on Statutory Right-of-Way Plan LMP45370 containing 937 square metres.

(Portion of 8748 - 120 Street)

2. The Mayor and Clerk are hereby authorized to sign and seal all documents necessary and incidental to effect such expropriation.
3. This By-law may be cited for all purposes as "Portion of 8748 - 120 Street Expropriation By-law, 2000, No. 13989".
4. This By-law comes in to full force and effect on the date of final adoption.

PASSED THREE READINGS on the 3rd day of April, 2000.

RECONSIDERED AND FINALLY ADOPTED, signed by the Mayor and Clerk, and sealed with the Corporate Seal on the 10th day of April, 2000.

_____ MAYOR

_____ CLERK

h:\by-laws\adopted\2000\clk13989.blw

STATIONARY RIGHT OF WAY PLAN OF PORTIONS OF SECTION 30
 TOWNSHIP 2 & NEW WESTMINSTER DISTRICT
 B.C. S. 926.018

DEPARTMENT OF HIGHWAYS, LAND TITLE ACT

DETAIL - A
 N.L.S.
 88 AVE.

DETAIL - B
 N.L.S.
 88 AVE.

DETAIL - C
 N.L.S.
 88 AVE.

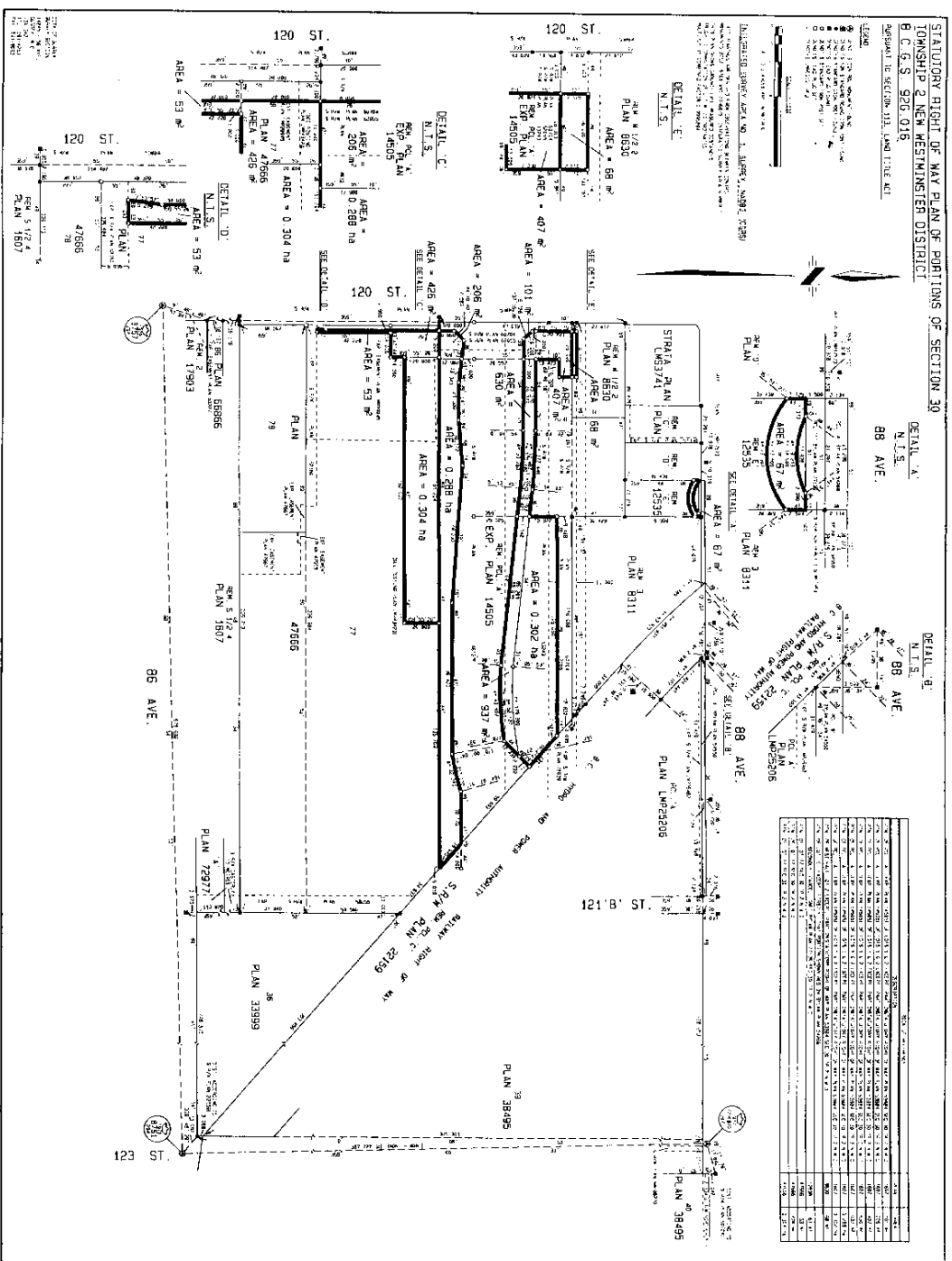
DETAIL - D
 N.L.S.
 88 AVE.

PLAN LMP 45370

PREPARED IN THE LAND TITLE OFFICE
 AT NEW WESTMINSTER 2002

THE PLAN, THE DISTRICT, THE SECTION AND
 EXAMINED SECTION NUMBER

PLAN NO.	AREA (sq. ft.)	AREA (sq. m.)	PLAN NO.	AREA (sq. ft.)	AREA (sq. m.)
PLAN 1793	1,100	101	PLAN 1794	1,100	101
PLAN 1795	1,100	101	PLAN 1796	1,100	101
PLAN 1797	1,100	101	PLAN 1798	1,100	101
PLAN 1799	1,100	101	PLAN 1800	1,100	101
PLAN 1801	1,100	101	PLAN 1802	1,100	101
PLAN 1803	1,100	101	PLAN 1804	1,100	101
PLAN 1805	1,100	101	PLAN 1806	1,100	101
PLAN 1807	1,100	101	PLAN 1808	1,100	101
PLAN 1809	1,100	101	PLAN 1810	1,100	101
PLAN 1811	1,100	101	PLAN 1812	1,100	101
PLAN 1813	1,100	101	PLAN 1814	1,100	101
PLAN 1815	1,100	101	PLAN 1816	1,100	101
PLAN 1817	1,100	101	PLAN 1818	1,100	101
PLAN 1819	1,100	101	PLAN 1820	1,100	101
PLAN 1821	1,100	101	PLAN 1822	1,100	101
PLAN 1823	1,100	101	PLAN 1824	1,100	101
PLAN 1825	1,100	101	PLAN 1826	1,100	101
PLAN 1827	1,100	101	PLAN 1828	1,100	101
PLAN 1829	1,100	101	PLAN 1830	1,100	101
PLAN 1831	1,100	101	PLAN 1832	1,100	101
PLAN 1833	1,100	101	PLAN 1834	1,100	101
PLAN 1835	1,100	101	PLAN 1836	1,100	101
PLAN 1837	1,100	101	PLAN 1838	1,100	101
PLAN 1839	1,100	101	PLAN 1840	1,100	101
PLAN 1841	1,100	101	PLAN 1842	1,100	101
PLAN 1843	1,100	101	PLAN 1844	1,100	101
PLAN 1845	1,100	101	PLAN 1846	1,100	101
PLAN 1847	1,100	101	PLAN 1848	1,100	101
PLAN 1849	1,100	101	PLAN 1850	1,100	101
PLAN 1851	1,100	101	PLAN 1852	1,100	101
PLAN 1853	1,100	101	PLAN 1854	1,100	101
PLAN 1855	1,100	101	PLAN 1856	1,100	101
PLAN 1857	1,100	101	PLAN 1858	1,100	101
PLAN 1859	1,100	101	PLAN 1860	1,100	101
PLAN 1861	1,100	101	PLAN 1862	1,100	101
PLAN 1863	1,100	101	PLAN 1864	1,100	101
PLAN 1865	1,100	101	PLAN 1866	1,100	101
PLAN 1867	1,100	101	PLAN 1868	1,100	101
PLAN 1869	1,100	101	PLAN 1870	1,100	101
PLAN 1871	1,100	101	PLAN 1872	1,100	101
PLAN 1873	1,100	101	PLAN 1874	1,100	101
PLAN 1875	1,100	101	PLAN 1876	1,100	101
PLAN 1877	1,100	101	PLAN 1878	1,100	101
PLAN 1879	1,100	101	PLAN 1880	1,100	101
PLAN 1881	1,100	101	PLAN 1882	1,100	101
PLAN 1883	1,100	101	PLAN 1884	1,100	101
PLAN 1885	1,100	101	PLAN 1886	1,100	101
PLAN 1887	1,100	101	PLAN 1888	1,100	101
PLAN 1889	1,100	101	PLAN 1890	1,100	101
PLAN 1891	1,100	101	PLAN 1892	1,100	101
PLAN 1893	1,100	101	PLAN 1894	1,100	101
PLAN 1895	1,100	101	PLAN 1896	1,100	101
PLAN 1897	1,100	101	PLAN 1898	1,100	101
PLAN 1899	1,100	101	PLAN 1900	1,100	101



1. IN THE PLAN, A REFERENCE TO AN AREA OR DISTANCE IS TO BE TAKEN AS THE MEASURED DISTANCE OR AREA, UNLESS OTHERWISE SPECIFIED.
 2. THE PLAN IS TO BE CONSIDERED AS A PART OF THE LAND TITLE RECORD AND AS SUCH, IT IS TO BE OPEN TO PUBLIC INSPECTION AT ALL TIMES.
 3. THE PLAN IS TO BE CONSIDERED AS A PART OF THE LAND TITLE RECORD AND AS SUCH, IT IS TO BE OPEN TO PUBLIC INSPECTION AT ALL TIMES.
 4. THE PLAN IS TO BE CONSIDERED AS A PART OF THE LAND TITLE RECORD AND AS SUCH, IT IS TO BE OPEN TO PUBLIC INSPECTION AT ALL TIMES.
 B.C.L.S.
 2002-07