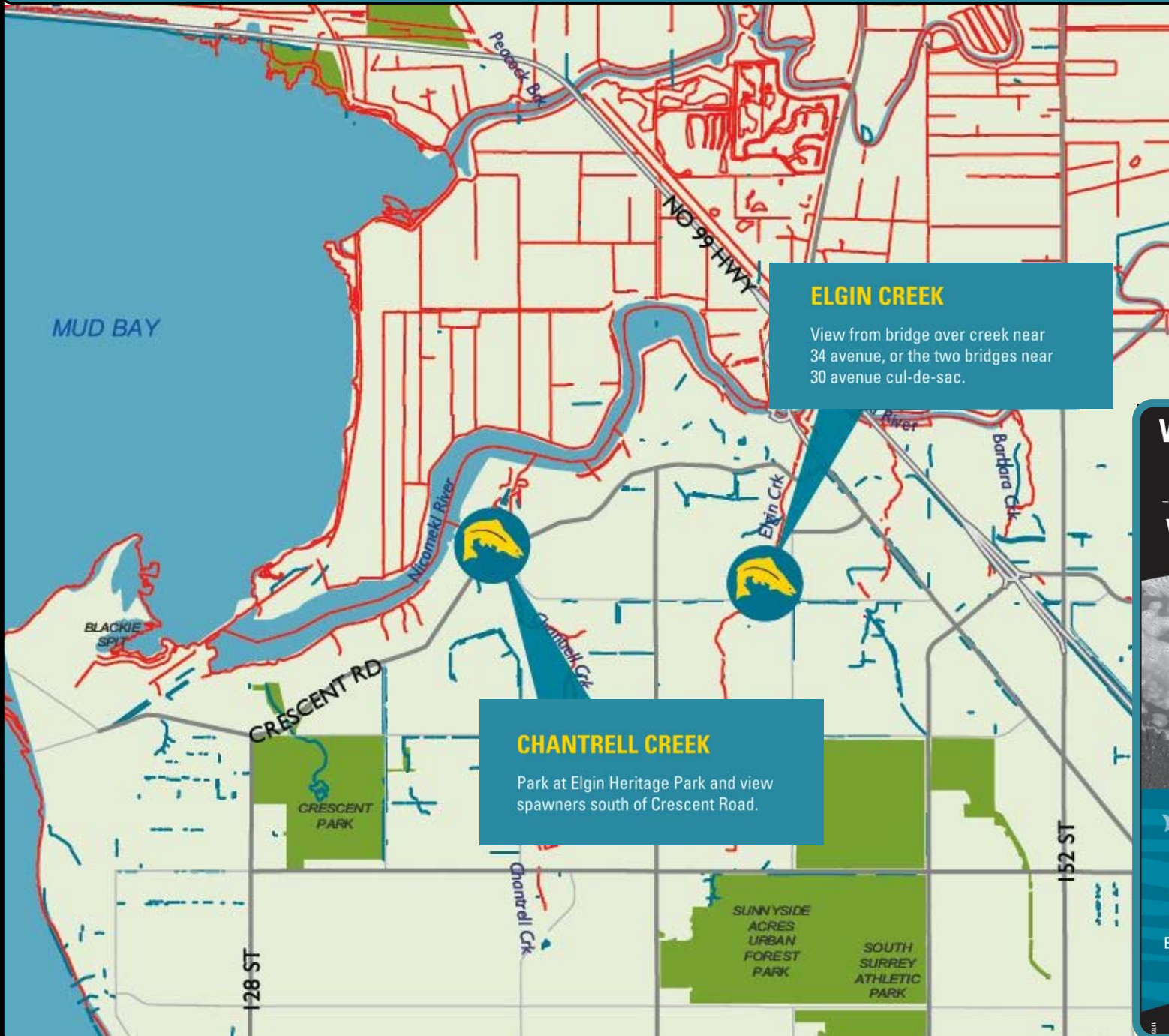


Elgin & Chantrell Creeks



ELGIN CREEK
View from bridge over creek near 34 avenue, or the two bridges near 30 avenue cul-de-sac.

CHANTRELL CREEK
Park at Elgin Heritage Park and view spawners south of Crescent Road.

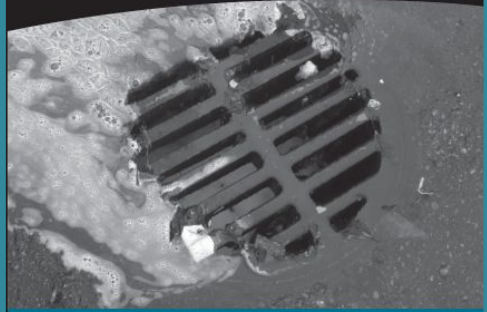
SPOTTING Salmon IN THE CITY

LEGEND

- FISH BEARING STREAMS & CREEKS (Red line)
- OTHER STREAMS & CREEKS (NO SALMON OR TROUT) (Blue line)
- ROAD NETWORK (Grey line)
- BODIES OF WATER (Blue square)
- PARKS (Green square)
- SPOT FISH HERE (Yellow fish icon)

Would you dump chemicals in your drinking water?

WHY DUMP IT IN THEIRS?



FISH TIP

All storm drains connect to local creeks and streams. If you witness a spill or chemicals being washed into a storm drain, contact the City of Surrey's Engineering Department at 604-590-7226.