

NO: R106

COUNCIL DATE: May 30, 2022

---

## REGULAR COUNCIL

**TO: Mayor & Council** **DATE: May 24, 2022**

**FROM: General Manager, Engineering** **FILE: 1721-027/11**

**SUBJECT: Award of Contracts 1721-027-11 and 1721-027 C1  
Road Works on Fraser Highway Improvements, George Junction to 14200  
Block as part of Early Works for Surrey-Langley Skytrain.**

---

## RECOMMENDATIONS

The Engineering Department recommends that Council:

1. Award Contract No. 1721-027-11 to B&B Heavy Civil Construction Ltd. in the amount of \$17,524,080.00 (including GST), for Fraser Highway Improvements from George Junction to the 14200 Block;
2. Set the expenditure authorization limit for Contract No. 1721-027-11 at \$19,300,000.00 (including GST and contingency);
3. Award Consultant Construction Agreement No. 1721-027 C1 to Aplin & Martin Consultants Ltd. in the amount of \$357,292.95 (including GST) for the related engineering construction services;
4. Set the expenditure authorization limit for Consultant Construction Agreement No. 1721-027 C1 at \$393,000.00 (including GST and contingency); and
5. Authorize the General Manager, Engineering to execute Contract Nos. 1721-027-11 and 1721-027 C1.

## BACKGROUND

In fall 2020, Council approved an optimized four-lane Fraser Highway design between 140 Street and 148 Street through Green Timbers. The design establishes two lanes of travel in each direction in one of the most congested corridors in the City and an unfinished central median as Early Works to allow for the establishment of the future Surrey-Langley Skytrain (“SLS”) guideway installation. On July 12, 2021, Council approved Corporate Report No. R146; 2021 for construction of the Fraser Highway improvements between 14200 Block and 148 Street. Phase 1 was predominantly completed in fall 2021 with completion of remaining instream work scheduled for June 2022.

This contract represents the final phase of a 20-year program that has widened Fraser Highway from two lanes to four lanes and added pedestrian and cycling facilities from King George Boulevard to 196 Street.

## SCOPE OF WORK

### Construction Contract

The construction contract consists of Fraser Highway widening to four lanes with cycling and pedestrian facilities and a widened centre median to accommodate the upcoming SLS Project. Works consist of road widening, concrete curbs, sidewalks, multi-use paths, retaining walls, street lighting, traffic signals, wildlife culvert, fish passage improvements and in-stream works at the locations listed in the following table, which are also illustrated on the map attached to this report as Appendix "I":

Map Reference Number	Project Description	Location
1	Roadworks	Fraser Highway: George Junction to East of 96 Ave
2	Culvert Replacement	Fraser Highway at Quibble Creek

The contract permits construction from 7:00 a.m. to 10:00 p.m., Monday through Friday, in compliance with the *Surrey Noise Control Bylaw, 1982, No. 7044*. In order to safely complete the installation of the fish and wildlife culvert and expedite construction, a full road closure will be required between 140 Street and east of 96 Avenue between June and September 18, 2022. As well, a full road closure will be required between George Junction to 140 Street between March and May 2023. Access for local businesses and residents will be maintained during the road closure. The contract includes an option for contractors to work 24-hours a day, seven days a week during the full road closure between 140 Street and east of 96 Avenue, but not the segment between George Junction and 140 Street as this segment is located in a residential area.

### Engineering Construction Services

The engineering construction services consists of contract administration and field inspection services including civil work inspection by Aplin & Martin Consultants Ltd., and geotechnical, arborist, and electrical field inspection services from other consultants who will be retained as sub-consultants through the engineering construction services contract with Aplin & Martin Consultants Ltd.

### Tree Impact

Based on the detailed design, the fish and wildlife culvert improvements on Quibble Creek, immediately east of 140 Street, will require removal of approximately 15 - 20 Bylaw size trees within the Surrey Nature Centre and parkland south of Fraser Highway.

To offset the trees removed, the City will plant all trees at a 2:1 ratio within the area, which exceeds the *Surrey Tree Protection By-law, 2006 No. 16100*.

The contract work is expected to start in June 2022 and be completed by May 2023.

## TENDER RESULTS

Tender invitations were extended to contractors who were prequalified under the City's Request for Expression of Interest prequalification process. Tenders for the subject contract were opened on May 19, 2022, with the following results:

<i>Contractor</i>	<i>Tendered Amount with GST</i>	<i>Corrected Amount</i>
1. B&B Heavy Civil Construction Ltd.	\$17,524,080.00	No Change
2. Tybo Contracting Ltd.	\$18,747,750.00	No Change

The Engineer's (Aplin & Martin Consultants Ltd.) pre-tender estimate was \$17.5 million (including GST).

## EVALUATION

The tender submissions were reviewed for accuracy and completeness. No errors were found. All submissions included the required 10% bid bond and were signed on the Tender Form.

The low bidder, B&B Heavy Civil Construction Ltd., has provided a Consent of Surety for a Performance Bond and a Labour & Materials Bond, and agreed to complete the work within 200 working days, as stipulated in the contract. B&B Heavy Civil Construction Ltd.'s past performance on similar work has been satisfactory. They have no outstanding legal claims against the City. It is recommended that B&B Heavy Civil Construction Ltd. be awarded Contract No. 1721-027-11.

## SUSTAINABILITY CONSIDERATIONS

The work of this contract supports the objectives of the City's Sustainability Charter 2.0. In particular, this work relates to the Sustainability Charter 2.0 themes of Infrastructure and Built Environment and Neighbourhoods. Specifically, this contract supports the following Desired Outcomes ("DOs"):

- All Infrastructure DO1: City facilities and infrastructure systems are well managed, adaptable and long lasting, and are effectively integrated into regional systems;
- Transportation DO14: Goods movement throughout the city is efficient, and minimizes environmental and community impacts; and
- Neighbourhoods and Urban Design DO2: Surrey is well-connected within the city and to the rest of the region by fast and efficient public transit and active for all-ages-and-abilities.

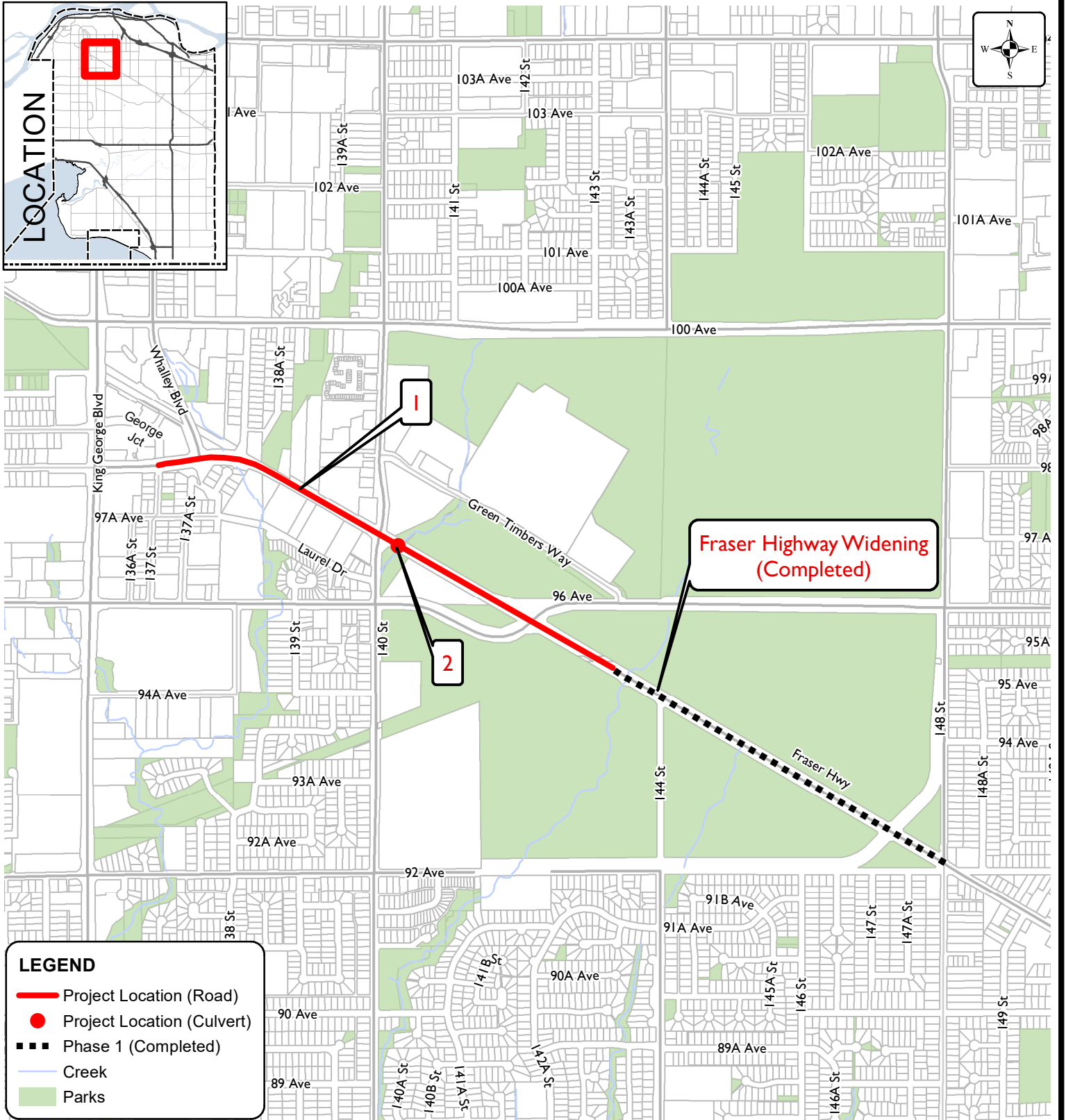
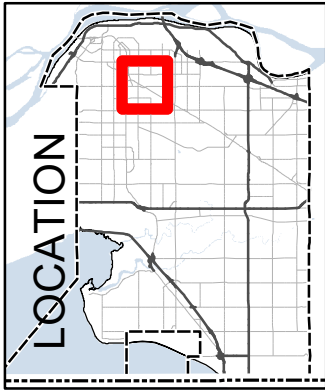
## FUNDING

The City has entered into a MOU with the province to apportion funding as part of SLS early works and will work to enter into agreement based on the awarded value of the contract. The City's portion of the funding for this contract is available in the approved 2022 Transportation Budget.

Scott Neuman, P. Eng.  
General Manager, Engineering

Appendix "I" – Map of Locations Contract No. 1721-027-11

[https://surreybc.sharepoint.com/sites/eng.administration/wp\\_docs/2022/admin/cr/final/may\\_30/award\\_of\\_contract\\_road\\_works\\_on\\_fraser\\_highway\\_improvements.docx](https://surreybc.sharepoint.com/sites/eng.administration/wp_docs/2022/admin/cr/final/may_30/award_of_contract_road_works_on_fraser_highway_improvements.docx)  
JHS 5/26/22 4:34 PM



**LEGEND**

- Project Location (Road)
- Project Location (Culvert)
- Phase 1 (Completed)
- Creek
- Parks

Produced by GIS Section: 18-May-2022, P205803 Scale: 1:15,000



**Contract No. 1721-027-11**  
**Fraser Highway Improvements from**  
**George Junction Avenue to**  
**14200 Block**

**ENGINEERING**  
**DEPARTMENT**

The data provided is compiled from various sources and IS NOT warranted as to its accuracy or sufficiency by the City of Surrey. This information is provided for information and convenience purposes only. Lot sizes, Legal descriptions and encumbrances must be confirmed at the Land Title Office. Source: G:\MAPPING\GIS\Maps\CorporateReps\DnCUJ\_dncFraserRdWidening\_API.mxd