



PURCHASING SECTION
13450 – 104 Avenue, Surrey, BC V3T 1V8
Tel: 604-590-7274
E-mail: purchasing@surrey.ca

ADDENDUM No. 1

REQUEST FOR QUOTATIONS No.: 1220-040-2017-012

TITLE: SOUTH SURREY WATER PARK

ADDENDUM ISSUE DATE: January 9, 2017

REVISED DATE: PREFER TO RECEIVE QUOTATIONS ON OR
BEFORE January 18, 2017.

INFORMATION FOR CONTRACTOR

Contractors are advised that Addendum No. 1 to RFQ 1220-040-2017-012 is hereby issued by the City. This addendum shall form part of the Contract Documents and is to be read, interpreted and coordinated with all other parts. The following information is provided for the above named project, to the extent referenced and shall become a part thereof. No consideration will be allowed for extras due to the Contractor or any sub-contractor not being familiar with this addendum. This Addendum No. 1 a four (4) Question and Answer document, three (3) electrical detail drawings pertaining to the waterpark installation, three (3) footing details for the waterpark components, and a revised three (3) page Schedule of Quantities, for a total of thirteen (13) pages in total including attachments.

INFORMATION ONLY

REVISED DATE: The City would prefer to receive Quotations on or before **January 18, 2017**. The City's office hours are 8:30 a.m. to 4:00 p.m., Monday to Friday, except statutory holidays.

QUESTIONS AND ANSWERS:

Q1: The roadworks and parking lot Civil Drawings were not included – will these be provided?

A1: The roadworks and parking lot works were part of Phase 1, completed in 2016. The works being put out for bid now are Phase 2, the water park, playground preparation, synthetic event lawn and picnic area.

Q2: Are we bidding on the "Event" area and adjacent to the parking lot only? The schedule of quantities and asphalt thickness re geotechnical report suggests there are three difference asphalt paving works: pathways, roadways/parking lots and event areas.

A2: What is out for bid is everything within the two heavy dashed lined areas shown on Sheet L1.0 in the drawings. The geotechnical report spans both phases of the same project. The City had to split the work into two phases to accommodate the expanded parking in time for a major sports event in 2016. For a better breakdown of the scope of work between the contractor and City Forces, please see the table on page 7 in the RFQ document. For a schedule of quantities accurate to the Phase 2 works only, please see pages 43 to 45 in the RFQ document as well as its revised version attached with this addendum.

Q3: What kind and size of wire is required from the Control Panel to the Post Activators?

A3: Each activator requires a minimum 18 AWG 2-wire conductor w/ ground.

Q4: Is there a wiring diagram for the Power Post Activators?

A4: Once the controller is built, Waterplay will have a project specific wiring diagram detailing the wiring connections for the activators at the controller. Attached are generic wiring diagrams which show activator input(s) at the control panel field terminal strip. One wire runs from L+ (24v out), and the second from IN1 (activator 1), IN2 (activator 2), IN3 (activator 3).

Q5: What are the wiring requirements for the solenoid valves mounted on the manifold?

A5: Solenoid valves require minimum 14 AWG wiring. The attached generic E-10 installation drawing shows typical valve wiring with a common 24V wire too each solenoid valve, and wiring from each solenoid to its corresponding output.

Q6: Are the splash pad electrical devices the three activators only?

A6: Yes.

Q7: Splash Pad Vendor drawings don't show the detail mentioned in item 6.3 on drawing page 29

A7: Each Waterplay feature includes a hole in the base plate. A grounding lug (by others) is to be installed and all features bonded together.

Q8: Please confirm that the electrical trade is to run the pipe and wires for the irrigation system. It is usually done by the irrigation contractor.

A8: The very-low-voltage wiring for irrigation system shall be done by the City's irrigation contractor. All wiring for 120V and above shall be provided by the Contractor's electrical contractor.

Q9: Confirm components of splash park as drawing and specifications do not align.

-The written spec notes 2 x Carronade 2.0, and the drawings show 3

-The drawings show a Spray Loop Tunnel, the written spec does not

-What about activators, drains, manifold and controller?

A9: Add 1 x Carronade 2.0 for a total of 3 as per vendor drawings (attached)

Add 2 x Activator: Power Post 2.0 as per vendor drawings (attached)

Add 1 x Activator: Action Plate as per vendor drawings (attached)

Add 1 x Drain for a total of 3

The City salvaged an identical Spray Loop Tunnel from the previous waterpark at this location. Our plan is to refurbish it and deliver it to the site when the rest of the waterpark equipment arrives. The Contractor still needs to complete the footings and plumbing for it and complete the installation. The supplier is aware of this and has adjusted their quote accordingly.

The manifold and controller are to be installed in a NEW vault to be supplied and installed by the Contractor.

Q10: Please provide specifications for the synthetic grass.

A10: Detail 10/L6.1 will be revised to typical synthetic grass installation as per manufacturers' recommendations.

Q11: Scope of work (section 011000 1.1.10 and .16) states contractor to supply and install Fibar and play equipment, drawings indicate supply and install is by City of Surrey. Please confirm.

A11: All work with playground equipment and new surfacing material has been removed from the Contractor's scope of work for simplicity of storing, refurbishing and reinstalling the equipment. The City will now perform all removals of existing equipment, and the reinstallation of pieces to be reused, the supply and install of new equipment, and the supply and installation of new engineered wood fibre surfacing.

The Contractor will be responsible for removing any existing drainage, the existing wood fibre surfacing, and the existing edge material as part of their demolition works. The Contractor is responsible for installing the new drainage, placing/grading the new subgrade material, and installing the curbing around the footprint of the new playground area. City Forces will then move in to that area of the site to finish the playground.

Q12: L2.1 detail 1 calls up the playground border as both "EXTRUDED CONCRETE CURB" and "CIP CONC WALL TYPE 2" Please confirm type of desired type.

A12: Extruded concrete curb please. This was a last minute change away from a wall to save cost. Any reference to CIP Conc Wall Type 2 around the playground should be read from here on as Extruded Concrete Curb.

Q13: Which unit price item should the seating wall type 2 be included in?

A13: 5.7. in the SoQ calls for Retaining Wall Type 2 instead of Seating Wall Type 2 (abutment walls refer to the 3 walls shown in structural drawing S11).

Q14: Which unit price item should the seating wall type 1 be included in?

A14: 5.6 SoQ call for Retaining Wall Type 1 instead of Seating Wall Type 1.

Q15: Please confirm depth of Picnic table areas as drawings and unit prices conflict.

A15: The unit price reflects the desired depth. All picnic pads to be 150mm thick with reinforcement per Concrete Paving Type 2. The exception to this is the concrete paving under the large shelter which has its own footings; that slab may be 100mm thickness.

Q16: Can you clarify the bollards required as mentioned in line item 5.13 on the SoQ? There is no mention in the details or specs?

A16: A previous version of draft RFQ drawings had bollards instead of gates at the pathway entrances but these were replaced by gates. No bollards are included in the current design.

Q17: To what extent has the existing roadway and curb and gutter been removed, as the existing demo plan shows the old road in place but the area is a lot more than given in item 2.3 800m2 vs 200m2

A17: The existing road surface and curbing that is shown bisecting the site on the demolition plan was removed as part of Phase 1 works. A portion of the old road base aggregates remains in place. Unforeseen snow coverage at the information meeting made it difficult to do a proper existing conditions tour.

Q18: On drawing C.2 it shows a 7.6m – 1500mm DR 35 drain line from the existing mechanical vault, has this been installed at the same time as the vault?

A18: The waterpark manifold and control box are to be installed in a new vault for with this drainage pipe is required.

Q19: Has the water connection been brought to the mechanical vault or where is it in relation to the vault?

A19: The water connection was completed through the mechanical vault, including all internal hardware (DCVA, etc.) with a stub out on the south side of the vault. The stub needs to be extended through the proposed water park kiosk and fixture supply lines as part of this scope of work.

Q20: The drawings show a spray loop tunnel but the specs do not mention one, can you clarify?

A20: The City salvaged a spray loop tunnel from the previous waterpark that was decommissioned in 2016. We will be refurbishing it and supplying it to the Contractor in conjunction with the delivery of the rest of the equipment. The Contractor must still supply the footings, etc.

Q21: Can we have a 1 week extension?

A21: We are only able to extend the closing date by six days to January 18, 2017.

Q22: Confirm no bid bond or performance bond is required.

A22: Neither bond is required.

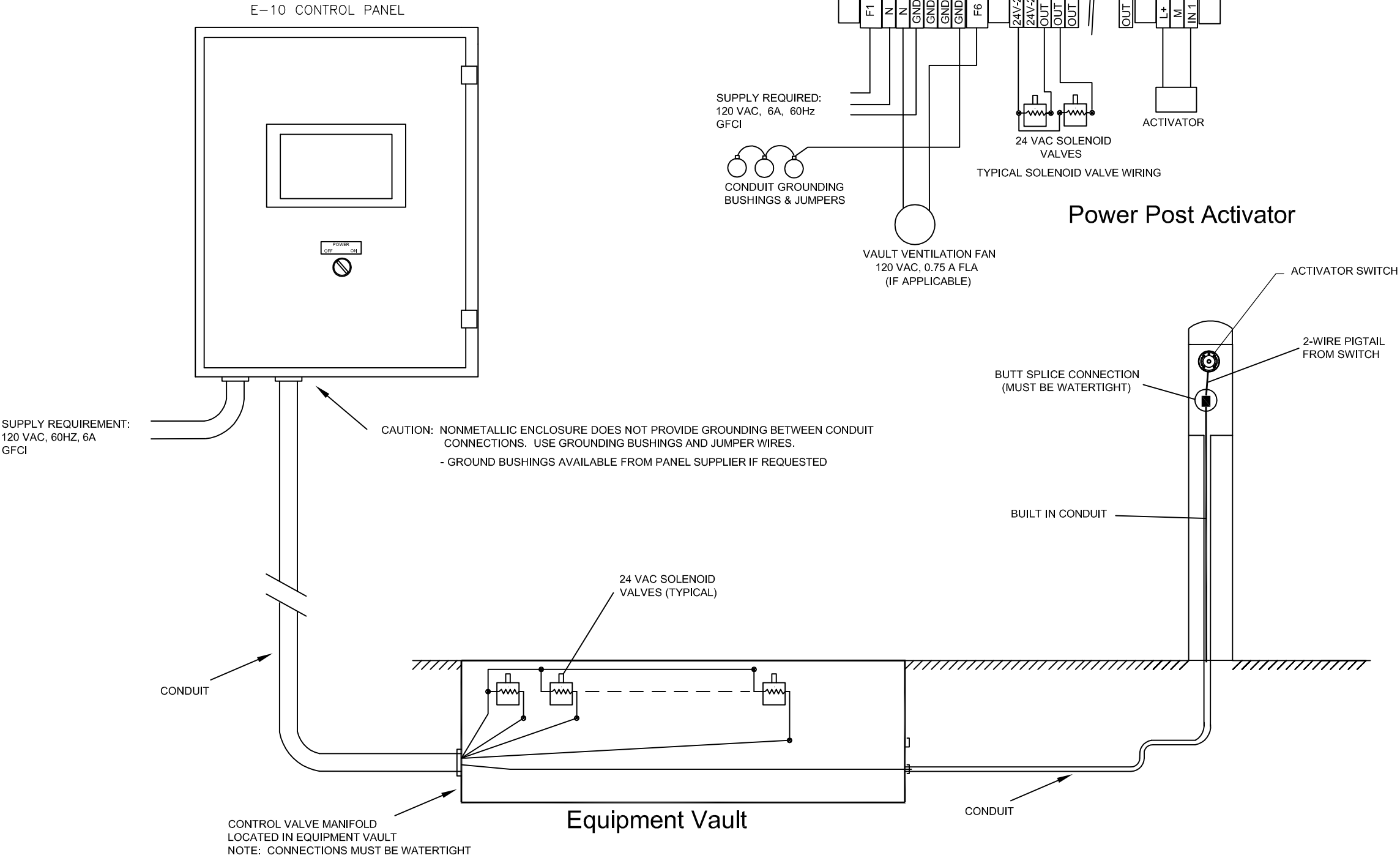
Q23: Schedule B Special Provisions item S.P.6 notes: "any work item that is not implicitly described, or inferred, as being included in any regular item or optional item in the Schedule of Prices shall be included in the lump sum price proposed for 'Miscellaneous Work.'" Please confirm item designated for miscellaneous work.

A23: A new Schedule of Quantities and Prices is attached to this addendum showing a new Section 6.0 with a new line item 6.1 designated for any miscellaneous work.

- END OF ADDENDUM -

DRAWING 7.1
E10 INSTALLATION DRAWING

- NOTES:
- 1. REFER TO O&M MANUAL FOR ADDITIONAL INSTRUCTIONS
 - 2. INSTALLATION MUST BE PERFORMED BY A QUALIFIED ELECTRICIAN
 - 3. CONTROL PANEL LOCATION & INSTALLATION MUST MEET LOCAL ELECTRICAL CODE REQUIREMENTS
 - 4. LOCAL AUTHORITIES MUST INSPECT & APPROVE THE INSTALLATION
 - 5. IN PREWIRED VAULT APPLICATIONS, CONTROL PANEL WILL BE LOCATED IN THE VAULT
 - 6. ALL CONDUIT HUBS TO DRILLED INTO BOTTOM OF ENCLOSURE

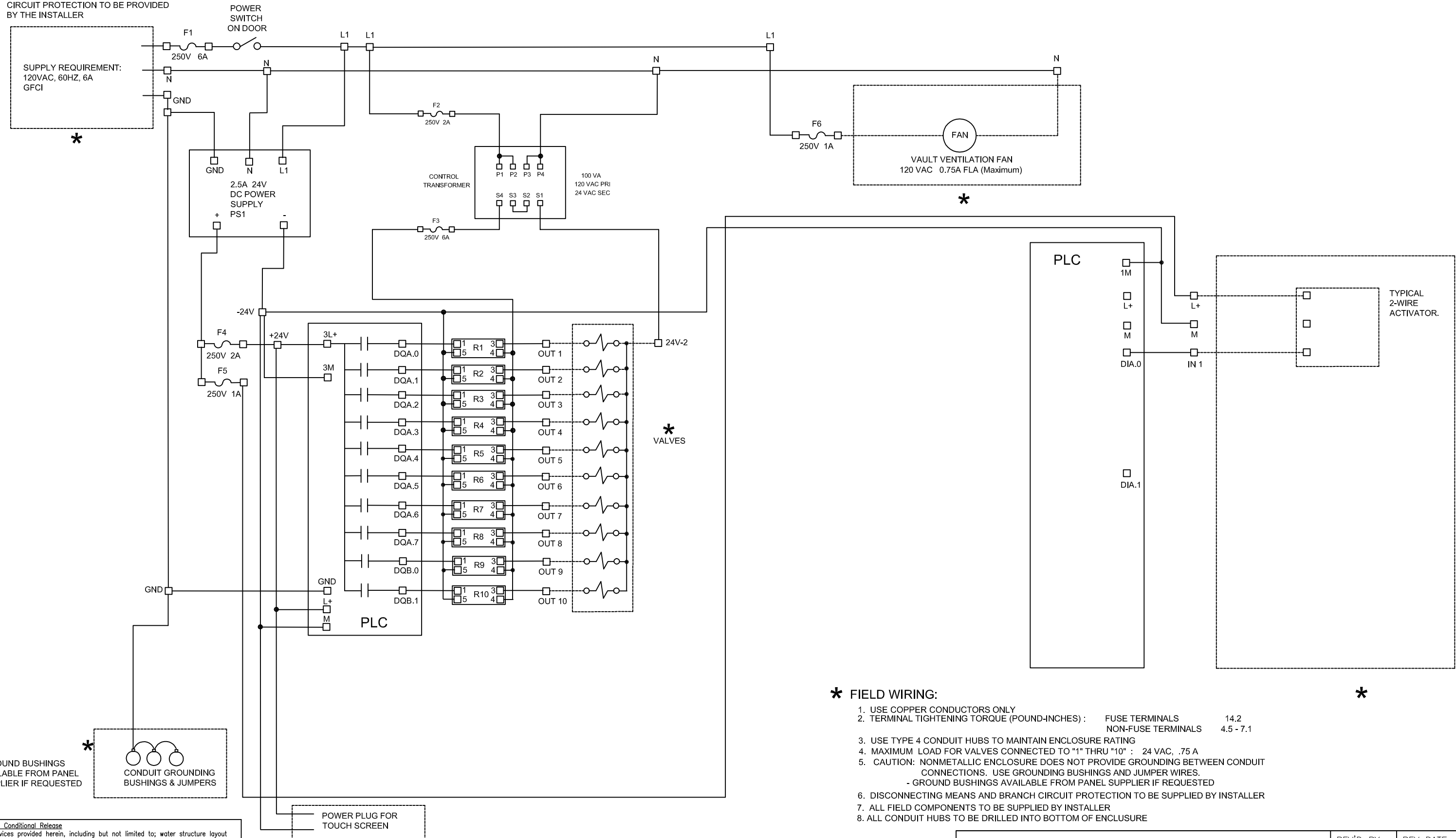


Design Services Conditional Release
The design services provided herein, including but not limited to; water structure layout guide, water supply routing, suggested footing details, construction guidelines, are provided at no charge. Waterplay Manufacturing Inc. reserves the right to invoice the recipient for these design services in the event genuine Waterplay products are not purchased, and are substituted by products other than those manufactured by Waterplay. The design services provided have an estimated value of \$2000 usd. The recipient of these designs has been made aware of aforementioned conditions.

REV		DESCRIPTION	REV'D BY	REV DATE
1451B ELLIS STREET, KELOWNA BC, CANADA V1P 2A3	SCALE: NA	DRAWN BY: MHK	DATE: SEP 19/12	REV #: 0
TEL. (250) 712-3393 FAX (250) 861-4814	FILE:	DWG BY: WATERPLAY MFG INC	DWG NAME: E10 INSTALLATION	SHEET 1/1
		PROJECT: SAMPLE	Copyright Material All plans & designs at all times remain the property of Waterplay Manufacturing Inc., and cannot be used or reproduced without the written consent of Waterplay.	

E-10 FIELD AND CONTROL WIRING DIAGRAM

DISCONNECTING MEANS AND BRANCH CIRCUIT PROTECTION TO BE PROVIDED BY THE INSTALLER



* FIELD WIRING:

1. USE COPPER CONDUCTORS ONLY
2. TERMINAL TIGHTENING TORQUE (POUND-INCHES) :

FUSE TERMINALS	14.2
NON-FUSE TERMINALS	4.5 - 7.1
3. USE TYPE 4 CONDUIT HUBS TO MAINTAIN ENCLOSURE RATING
4. MAXIMUM LOAD FOR VALVES CONNECTED TO "1" THRU "10" : 24 VAC, .75 A
5. CAUTION: NONMETALLIC ENCLOSURE DOES NOT PROVIDE GROUNDING BETWEEN CONDUIT CONNECTIONS. USE GROUNDING BUSHINGS AND JUMPER WIRES.
- GROUND BUSHINGS AVAILABLE FROM PANEL SUPPLIER IF REQUESTED
6. DISCONNECTING MEANS AND BRANCH CIRCUIT PROTECTION TO BE SUPPLIED BY INSTALLER
7. ALL FIELD COMPONENTS TO BE SUPPLIED BY INSTALLER
8. ALL CONDUIT HUBS TO BE DRILLED INTO BOTTOM OF ENCLOSURE

Design Services Conditional Release
The design services provided herein, including but not limited to; water structure layout guide, water supply routing, suggested footing details, construction guidelines, are provided at no charge. Waterplay Manufacturing Inc. reserves the right to invoice the recipient for these design services in the event genuine Waterplay products are not purchased, and are substituted by products other than those manufactured by Waterplay. The design services provided have an estimated value of \$2000 usd. The recipient of these designs has been made aware of aforementioned conditions.

1451B ELLIS STREET, KELOWNA BC, CANADA V1P 2A3
TEL. (250) 712-3393 FAX (250) 861-4814
EMAIL design@waterplay.com

SCALE:
NA

DRAWN BY: MHK

DATE: SEP 19/12

REV #:	0
--------	---

DWG NAME:
E10 WIRING

SHEET
1/1

Copyright Material

All plans & designs at all times remain the property of Waterplay Manufacturing Inc., and cannot be used or reproduced without the written consent of Waterplay.

REV'D BY

REV DATE

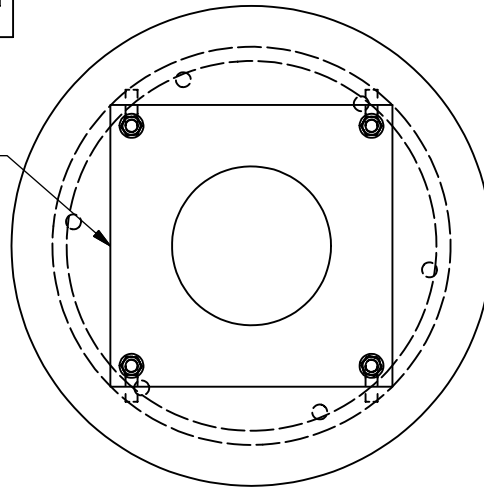
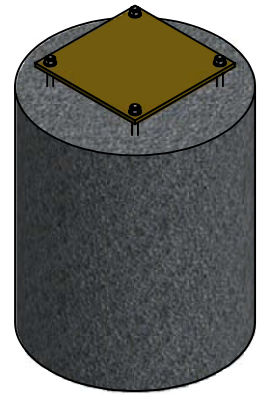
Z:\VERICH\TIC\Water\WP1000\Water\In-REY\log\8-Jul-00

FOOTING DETAIL 'B'

CONCRETE VOLUME: 0.131 CU. YD/0.1 CU. M

FOOTING IS A RECOMMENDATION ONLY.
CHANGES MAY BE REQUIRED TO MEET WITH LOCAL
BUILDING CODES AND PROFESSIONAL PRACTICES.

REFER TO TEMPLATE FOR DETAILS
TPW-03003 (8" X 8")
TPW-03002 (12" X 12")



WATERPLAY COMPONENT

(4) ANCHOR BOLT
REFER TO COMPONENT SPECS

2"
[51 mm]

25 MPA (3600 P.S.I.)
CONCRETE

(6) 15M (5/8") X 19" (480mm) LONG
@ MAX 8" (203 mm) (O.C.
VERT SKIN REINF

(4) 10M (3/8") CIRCULAR
TIES @ MAX 6" (152mm) O.C.
W /MIN 1 1/2" (38mm) COVER

1 1/2"
[38 mm] MIN

6" EMBEDMENT
[152 mm]

1 1/2"
[38 mm] MIN

Ø1'-8"
[508 mm]

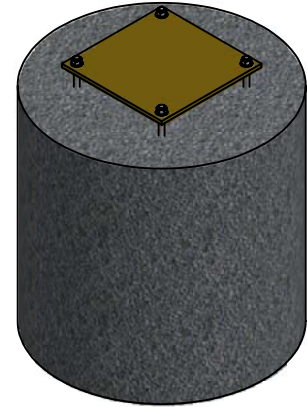
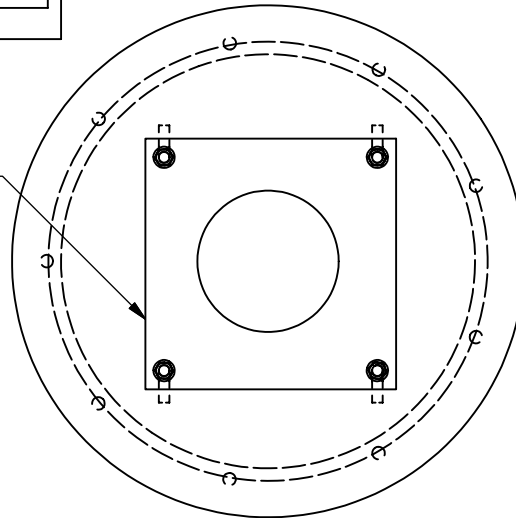
GRANULAR BASE BETWEEN
FOOTING AND COMPACT SUBGRADE
MAY BE REQUIRED TO MEET LOCAL CODES

FOOTING DETAIL 'C'

CONCRETE VOLUME: 0.233 CU. YD/.178 CU. M

FOOTING IS A RECOMMENDATION ONLY.
CHANGES MAY BE REQUIRED TO MEET WITH LOCAL
BUILDING CODES AND PROFESSIONAL PRACTICES.

REFER TO TEMPLATE
FOR DETAILS
TPW-03002 (12"x 12")



WATERPLAY COMPONENT

2"
[51 mm]

(4) ANCHOR BOLTS
REFER TO COMPONENT SPECS

25 MPA (3600 P.S.I.)
CONCRETE

(9) 15M (5/8") X 19" (482mm) LONG
@ MAX 8" (203 mm) O.C.
VERT. SKIN REINF

(4) 10M (3/8") CIRCULAR
TIES @ MAX 6" (152 mm) O.C.
W /MIN 1 1/2" (38mm) COVER

1 1/2"
[34 mm] MIN

1 1/2"
[38 mm] MIN

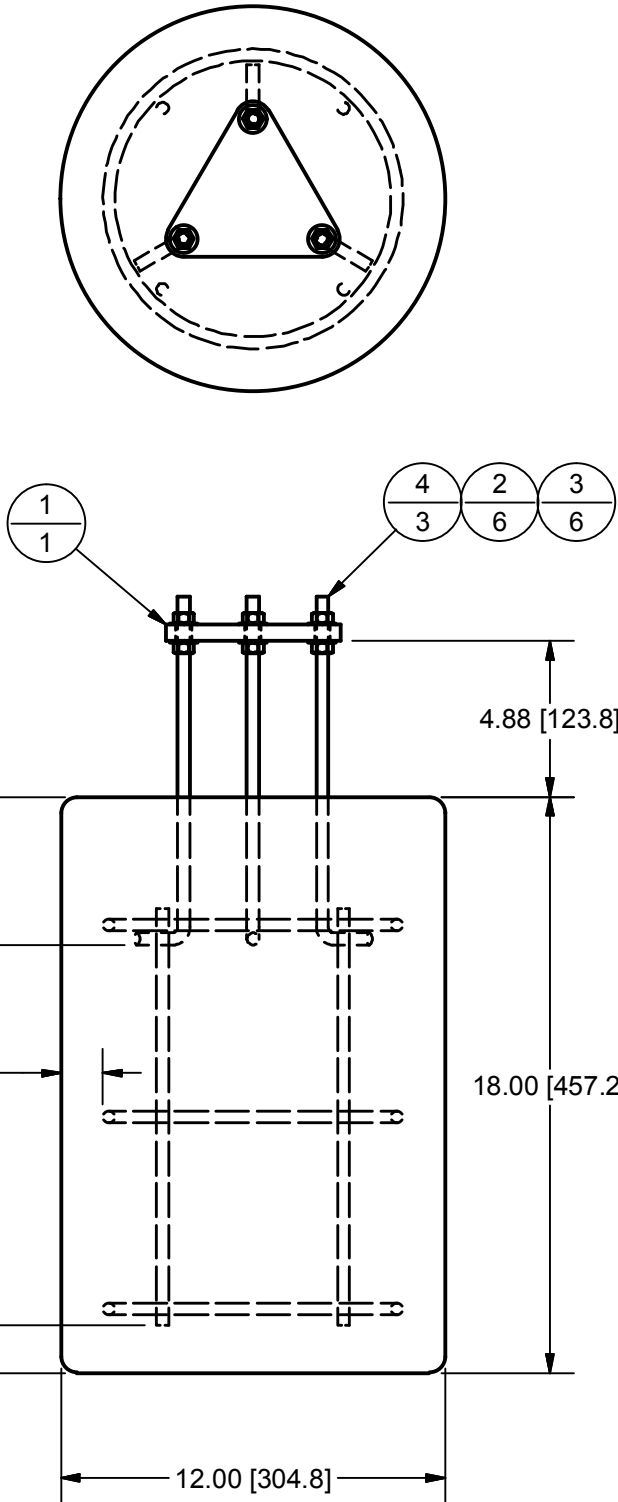
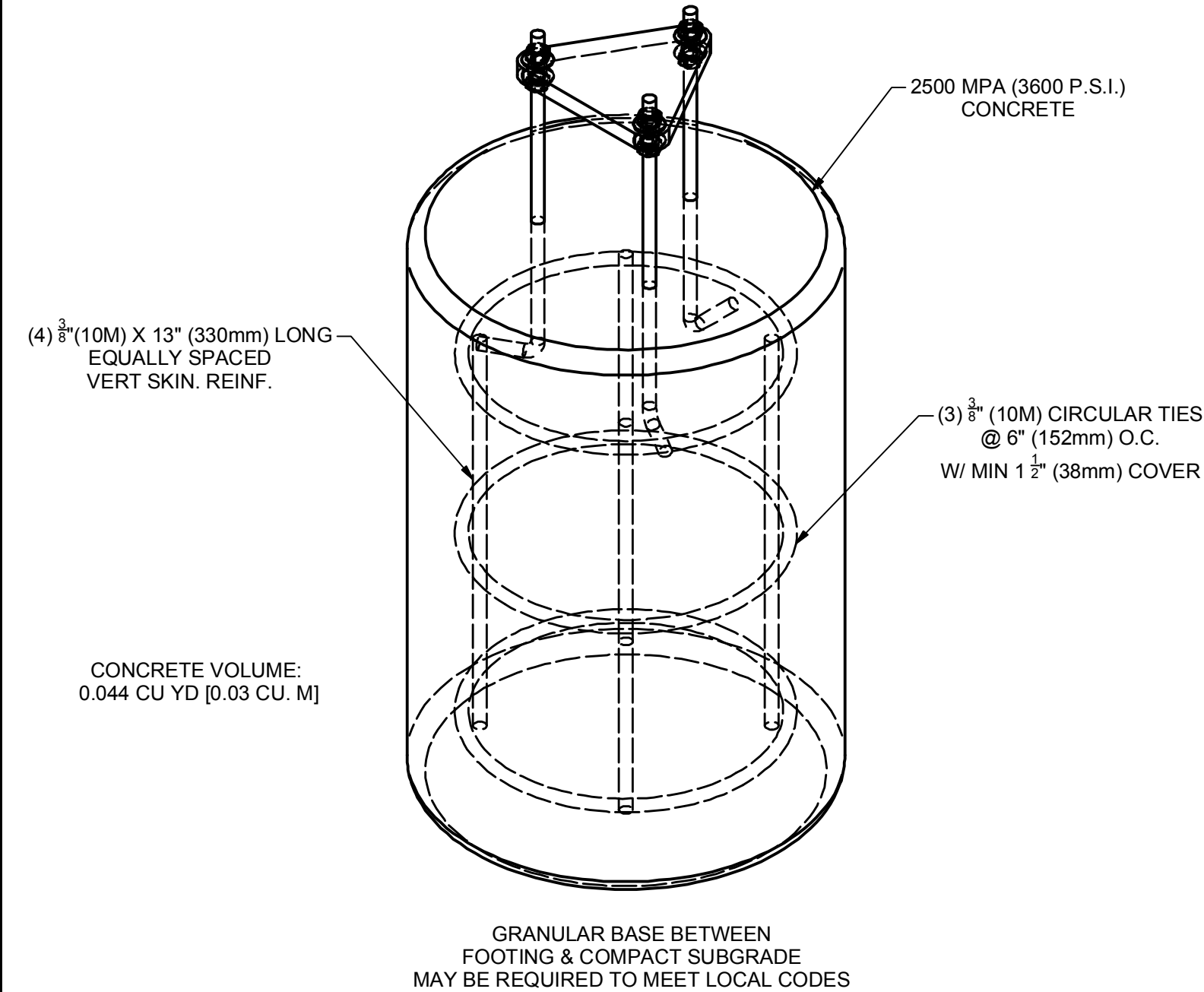
6" EMBEDMENT
[152 mm]
2'-0"
[610 mm]

Ø2'-0"
[610 mm]

GRANULAR BASE BETWEEN
FOOTING AND COMPACT SUBGRADE
MAYBE REQUIRED TO MEET LOCAL CODES

ITEM	PART ID	DESCRIPTION	MATERIAL	QTY
1	0002-0494	FOOTING TEMPLATE	PARTICLE BOARD	1
2	NUT-02031	NUT, HEX, 3/8-16	SST	6
3	WAS-02031	WASHER, FLAT, 3/8 (0.88 OD)	SST	6
4	0001-1101	ANCHOR BOLT, 304SS, 3/8-16NC X 10.88" L	SST	3

FOOTING IS A RECOMMENDATION ONLY.
CHANGES MAY BE REQUIRED TO MEET WITH LOCAL
BUILDING CODES & PROFESSIONAL PRACTICES



NOTES:
THE CONTRACTOR SHALL USE EXTREME CARE WHEN INSTALLING WATERPLAY COMPONENTS. IT IS RECOMMENDED TO LEAVE ALL WRAPPING INTACT THROUGHOUT THE INSTALLATION. ALL WATERPLAY EQUIPMENT SHOULD BE STORED TOGETHER IN A SECURE, DRY STORAGE FACILITY. NOZZLES SHOULD BE REMOVED AND BLANKS INSTALLED FOR WINTER, OR OTHER OUT OF SERVICE PERIODS.

ALL PLANS AND DESIGNS AT ALL TIMES REMAIN THE PROPERTY OF THE WATERPLAY SOLUTIONS CORPORATION AND CANNOT BE USED OR REPRODUCED WITHOUT WRITTEN PERMISSION.

waterplay
Solutions Corp.
DREAM • DESIGN • DELIVER

1451B ELLIS STREET
KELOWNA, BRITISH COLUMBIA
CANADA, V1Y 2A3
P: 250-712-3393 F: 250-861-4814

COMPONENT ID:
N/A

THIRD ANGLE
PROJECTION

DESIGNED: DENSCO	FOOTING DETAIL 'F'				
DRAWN: DENSCO					
CHECKED: JAMIRV	FOOTINGS				
DATE: 4/17/2013	DWG ID: 0002-3904	REV: A	SIZE: B	SCALE: NTS	SHEET: 1
					OF: 1

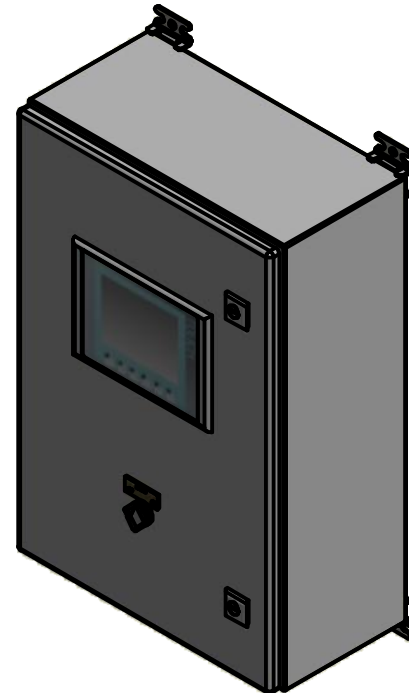
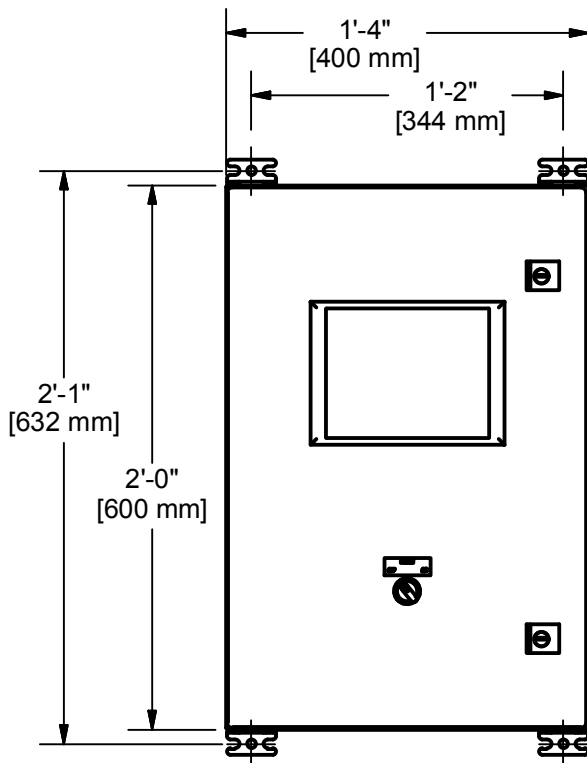
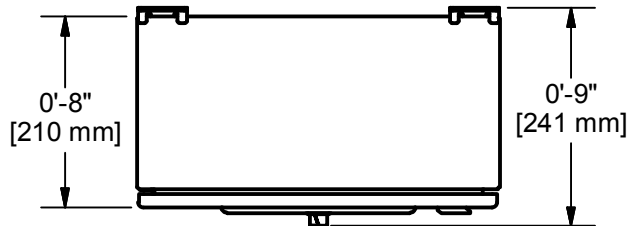
WW E-10 CONTROLLER, STD, POTABLE

PROGRAMMABLE FEATURES

1. COMPONENT RUN TIMES
2. ACTIVATION SEQUENCE
3. PARK OPERATING DAYS
4. PARK HOURS OF OPERATION
5. DATE & TIME OF DAY
6. TEST MODE

AVAILABLE VERSIONS


PRODUCT SKU	DESCRIPTION
0002-1763	WW E-10 CONTROLLER, STD, POTABLE



ATTENTION:

IT IS THE RESPONSIBILITY OF THE INSTALLER TO MAKE THE FIELD INSTALLATION **NEMA 4** COMPLIANT. THE INSTALLATION MUST COMPLY WITH LOCAL ELECTRICAL CODE REQUIREMENTS AND BE APPROVED BY LOCAL ELECTRICAL INSPECTION AUTHORITIES. CONTROL PANEL NOT TO BE INSTALLED IN DIRECT SUNLIGHT.

INITIAL

PANEL SIZE	24"H X 16"W X 8"D [600mm X 400mm X 210mm]	VALVE WIRE (BY OTHERS)	# 14 AWG TYPE R90, PLUS 1 COMMON PER VALVE TO CONTROLLER
PANEL TYPE	NEMA 4, STEEL ENCLOSURE	SENSOR WIRE (BY OTHERS)	3-WIRE, # 18 AWG SJOW OF N.31, PLUS 1 # 14 AWG GRD WIRE
MAX. # OF SENSORS	4	FEATURES  INDUSTRIAL GRADE PLC (PROGRAMMABLE LOGIC CONTROLLER) PLC FIELD PROGRAMMABLE, HMI IS NOT FIELD PROGRAMMABLE FACTORY PRE-PROGRAMMED TO RECOMMENDED SETTINGS HMI: TOUCH SCREEN WITH CUSTOM SPRAY PARK MENUS TEST MODE: INDIVIDUAL CONTROL OF VALVES	
MAX. # OF VALVES	10		
STORAGE TEMPERATURE	-20C to 60C (-4F to 140F)		
OPERATING TEMPERATURE	0C to 50C (32F to 120F)		
SYSTEM TIMER CONTROLLER	7 DAY 24 HOUR PROGRAMMABLE CLOCK		
SENSOR POWER	24 VDC	WEIGHT	
SOLENOID VALVE OUTPUT SIGNAL	24 VAC, 0.28A PER VALVE	DIMENSIONAL ACCURACY +/- 1" [25mm]	
HUMIDITY	10% TO 90%, NON CONDENSATION	DRAWING ID:	0002-1763
OUTPUT SEQUENCE	CUSTOM FIELD PROGRAMMABLE	REV:	A
INPUT POWER	120 VAC, DEDICATED 15 AMP GFI BREAKER	SHEET:	1
		OF:	1



1451B ELLIS STREET
KELOWNA, BRITISH COLUMBIA
CANADA, V1Y 2A3
P: 250-712-3393 F: 250-861-4814
E: design@waterplay.com W: waterplay.com

ALL PLANS AND DESIGNS AT ALL TIMES REMAIN THE PROPERTY OF THE WATERPLAY SOLUTIONS CORPORATION AND CANNOT BE USED OR REPRODUCED WITHOUT WRITTEN PERMISSION.

NOTE: THIS IS A PARTIAL SPECIFICATION. FOR FULL PRODUCT SPECIFICATIONS PLEASE REFER TO THE COMPONENT WRITTEN SPECIFICATION DOCUMENT. DUE TO OUR CONTINUING PRODUCT IMPROVEMENT PROGRAM, WATERPLAY SOLUTIONS CORP. RESERVES THE RIGHT TO CHANGE THIS SPECIFICATION WITHOUT NOTICE.

Excerpt from SCHEDULE C - QUOTATION

RFQ Title: SOUTH SURREY WATERPARK

RFQ No: 1220-040-2017-012

Fees and Payments (REVISED)

8. The Contractor offers to supply to the City of Surrey the Goods and Services for the prices plus applicable taxes as follows: (Changes from the original Schedule C – Section 8 “Fees and Payments” are highlighted in yellow, below)

F.O.B. Destination		Payment Terms: A cash discount of ____% will be allowed if invoices are paid within ____ days, or the ____ day of the month following, or net 30 days, on a best effort basis.			Ship Via:
DESCRIPTION		UNIT OF MEASURE	ESTIMATED QUANTITY	UNIT PRICE (\$)	AMOUNT (\$)
1.0 General Works					
1.1	Mobilization	lump sum	1	\$	\$
1.2	ESC Implementation	lump sum	1	\$	\$
1.3	Tree Protection	lump sum	1	\$	\$
1.4	Traffic Control	lump sum	1	\$	\$
1.0 Sub-Total:					\$
2.0 Demolition, Salvage and Removals					
2.1	Tree/shrub and surface removal (clear & grub)	lump sum	1	\$	\$
2.2	Site furnishing removal, storage or disposal, and/or return to City (per dwgs), includes exist. lighting	lump sum	1	\$	\$
2.3	Existing asphalt demolition	m2	200	\$	\$
2.4	Existing concrete demolition	m2	70	\$	\$
2.5	Catch basin removal	each	2	\$	\$
2.6	Chainlink fencing removal	lump sum	1	\$	\$

2.0 Sub-Total:					\$
3.0 Civil Utility Works, Earthworks, Plumbing and Electrical					
3.1	Common excavation c/w offsite disposal and subgrade preparation	m3	180	\$	\$
3.2	Crushed granular subbase (300mm depth)	tonne	50	\$	\$
3.3	Granular base (150mm depth)	tonne	740	\$	\$
3.4	150Ømm storm leads	lin. m	17	\$	\$
3.5	150Ømm sanitary leads	lin. m	30	\$	\$
3.6	150Ømm perf. storm in playground c/w clear crush and non-woven geotextile and cleanouts	lin. m	75	\$	\$
3.7	150Ømm PVC DR35 pipe c/w clear crush and non-woven geotextile and cleanouts	lin. m	22	\$	\$
3.8	Waterpark mechanical, electrical and civil works, complete: c/w (but not limited to) water supply lines, fixture footings, grounding wire loop, at grade and above ground fixtures, manifold valves and kiosk, controller and low voltage electrical system, Waterplay drains, and all other related works	lump sum	1	\$	\$
3.9	Area drains	each	3	\$	\$
3.10	Irrigation and utility sleeving under paths	lump sum	1	\$	\$
3.0 Sub-Total:					\$
4.0 Electrical Works					
4.1	Conduit and wiring (per dwgs)	lump sum	1	\$	\$
4.2	Lamp pole concrete bases	each	5	\$	\$
4.3	7.6m lamp pole	each	2	\$	\$
4.4	4.0m lamp pole	each	3	\$	\$
4.5	Lithonia KAD Series Luminaire	each	4	\$	\$
4.6	Lithonia CSX Series Luminaire	each	3	\$	\$
4.0 Sub-Total:					\$

5.0 Concrete & Asphalt Works, Fencing, and Synthetic Lawn					
5.1	Concrete barrier curb and gutter (includes 100mm depth granular base and excavation)	lin. m	194	\$	\$
5.2	Boulder placement (boulders supplied by City)	lump sum	1	\$	\$
5.3	CIP concrete paving (sidewalks & Picnic shelter pad – 100mm depth)	m2	365	\$	\$
5.4	CIP concrete paving (picnic table pads – 150mm depth)	m2	96	\$	\$
5.5	CIP concrete paving (various waterpark surfaces – 150mm depth)	m2	363	\$	\$
5.6	CIP concrete seating wall (Type 1)	lin. m	22	\$	\$
5.7	CIP concrete seating wall (Type 2, includes the three abutment walls from sheet S11)	lin. m	57	\$	\$
5.8	CIP concrete stairs (event area)	lin. m	3	\$	\$
5.9	Asphalt paving (pathways)	m2	590	\$	\$
5.10	Asphalt paving (event space)	m2	330	\$	\$
5.11	Synthetic lawn surfacing (event space)	m2	463	\$	\$
5.12	Lane and parking pavement markings	lump sum	1	\$	\$
5.13	All fencing and gates	lump sum	1	\$	\$
5.14	The large picnic shelter's four footings	lump sum	1	\$	\$
5.0 Sub-Total:					\$
6.0 Miscellaneous Work					
6.1	Miscellaneous work	lump sum	1	\$	\$
6.0 Sub-Total:					\$
CURRENCY: Canadian				Sum Sections 1.0 through 6.0:	\$
				Add GST (5%):	\$
				TOTAL QUOTATION PRICE:	\$