



**PURCHASING SECTION**  
13450 – 104 Avenue, Surrey, BC V3T 1V8  
Tel: 604-590-7274  
E-mail: [purchasing@surrey.ca](mailto:purchasing@surrey.ca)

**ADDENDUM No. 2**

---

**REQUEST FOR QUOTATIONS No.:** 1220-040-2016-027

**TITLE:** SUNNYSIDE COMMUNITY HALL RENOVATION

**ADDENDUM ISSUE DATE:** SEPTEMBER 30, 2016

**CLOSING DATE AND TIME:** PREFER TO RECEIVE QUOTATIONS ON OR BEFORE OCTOBER 12, 2016.

---

**INFORMATION FOR CONTRACTOR**

Contractors are advised that Addendum No. 2 to RFQ 1220-040-2016-027 is hereby issued by the City. This addendum shall form part of the Contract Documents and is to be read, interpreted and coordinated with all other parts. The following information is provided for the above name project, to the extent referenced and shall become a part thereof. No consideration will be allowed for extras due to the Contractor or any sub-contractor not being familiar with this addendum. This Addendum No. 2 contains fifteen (15) pages in total.

Refer to the following attachments for further details:

1. Attached are construction details SK-1 to SK-7.
2. Hunter Douglas or equal roller blinds product/specs. Sheet attached.

**INFORMATION ONLY**

1. Submit the price for the supply and installation of the new Moderco - Unifold 4400 accordion door as a separate price.
2. The scope of the paint work is all the interior walls and ceilings, including doors and frames (both sides) in all the rooms. PAINT TO BE: CLOVERDALE PAINT. WALL COLOURS: MERCURY 8260 (FIELD), TITANIC GREY 8305 AND JIVE CLIVE 7766 (ACCENTS). DOORS AND FRAMES COLOUR: GREY GRAPHITE 8302.

**RIN 9.2 - PLASTER AND GYPSUM BOARD** All drywall wall surfaces. DSD No 2,3:

**RIN 9.2B - High Performance Architectural Latex** After cleaning, filling, and sanding, spot prime any bare drywall with MPI # 137 - Primer Stain Blocker. Follow with 2 coat of MPI # 138 - High Performance Architectural Latex – Eggshell.

Note: All wet areas to be finished with MPI# 141. G2.

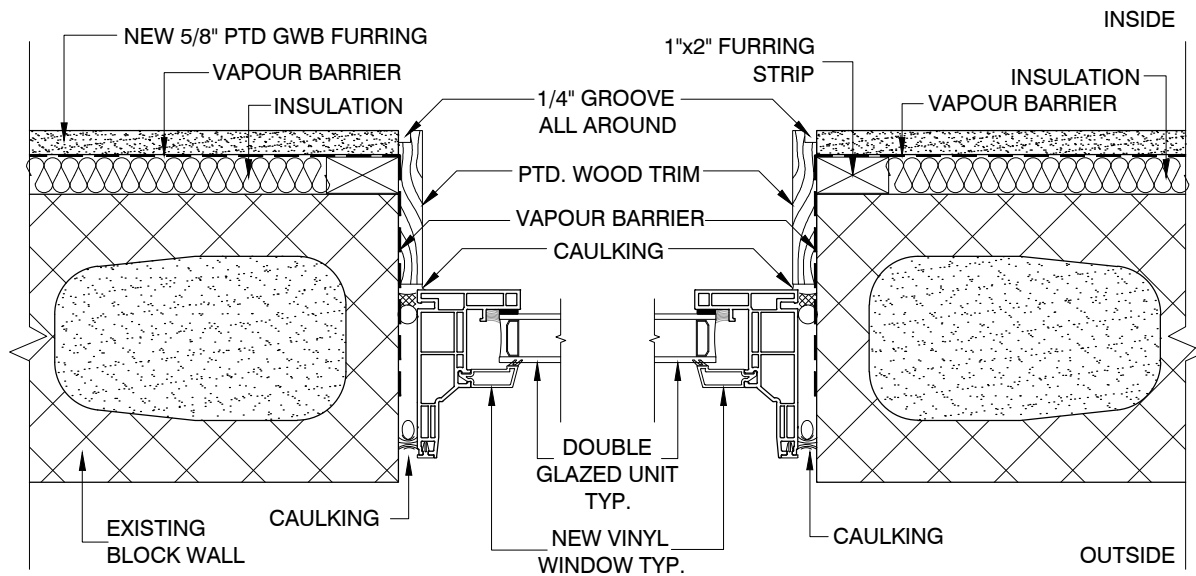
**RIN 5.1 - STRUCTURAL STEEL AND METAL FABRICATION** Galvanized steel doors and frames. DSD No 2:

**RIN 5.3B - Modified W.B. Alkyd** After cleaning and sanding, spot prime any bare galvanized steel with MPI # 134 - W.B. Galvanized Primer. Follow with 2 coats of MPI # 169 - W.B. Alkyd Semi-gloss. G5.

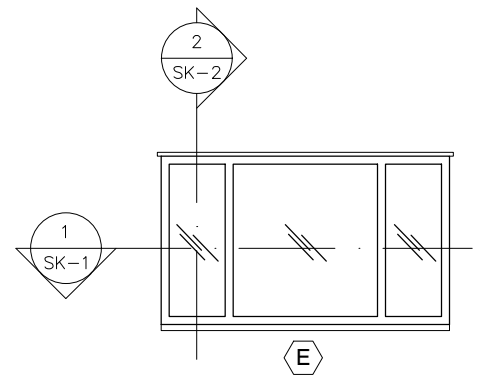
**Materials:**

1. All materials (primers, paints, coatings, varnishes, stains, etc.) shall be products listed in the latest edition of the **MPI** Approved Product List and shall be from a single manufacturer for each system used.
2. Other paint sundries such as linseed oil, shellac, solvents, shall be the highest quality product and shall be compatible with other coating materials as recommended by the MPI Approved product manufacturer.
3. All materials and paints shall be lead and mercury free.
4. Where required, paint products shall meet **MPI** "Environmentally Friendly" [E1] [E2] [E3] ratings based on VOC (EPA Method 24) content levels.
5. Where required, paints and coatings shall meet flame spread and smoke developed ratings designated by local Code requirements and/or authorities having jurisdiction.
6. Caulking and filling compounds shall be as recommended by the Painting Contractor's chosen paint manufacturer.
7. All paint materials shall have good flowing and brushing properties and shall dry or cure free of blemishes, sags, air entrapment, etc. Refer to 3.5, Field Quality Control / Standard of Acceptance requirements.

**- END OF ADDENDUM -**



1 TYP. WINDOW JAMB DETAIL @ CMU  
SK-1 3" = 1'-0"



PROJECT TITLE

Hall  
Community  
Sunnyside

Surrey, BC V4A1W8  
1845 154th Street

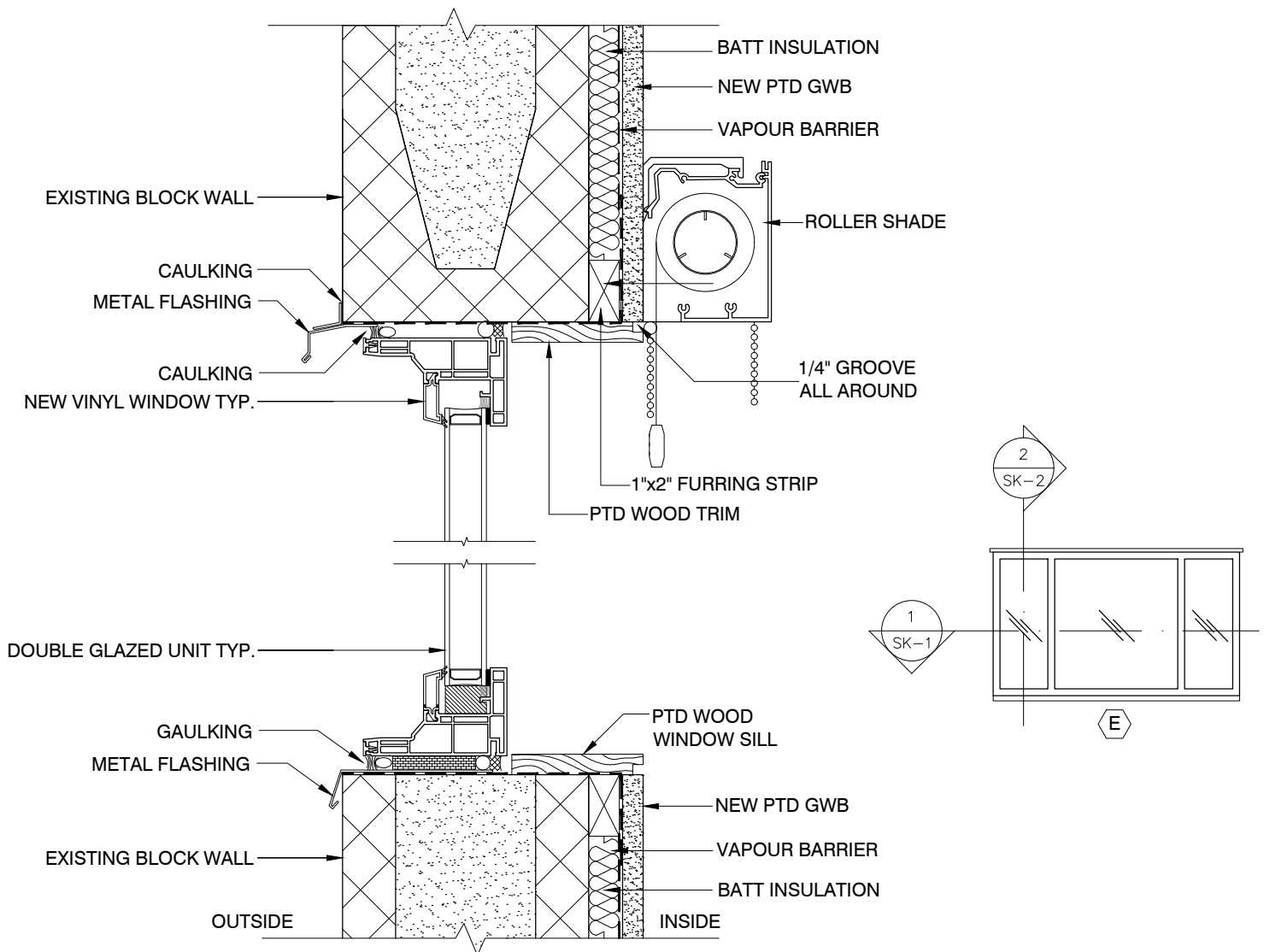


SHEET TITLE

Window Details at  
Concrete Block Wall

**SK-1**

REVISION No. 1  
DRAWN RS  
CHECKED CA  
SCALE 3" = 1'  
DATE September 22, 2016  
PRINTED September 27, 2016



1 TYP. WINDOW HEAD & SILL DETAIL @ CMU  
SK-2 3" = 1'-0"

PROJECT TITLE

**Hall  
Community  
Sunnyside**

Surrey, BC V4A1W8  
1845 154th Street

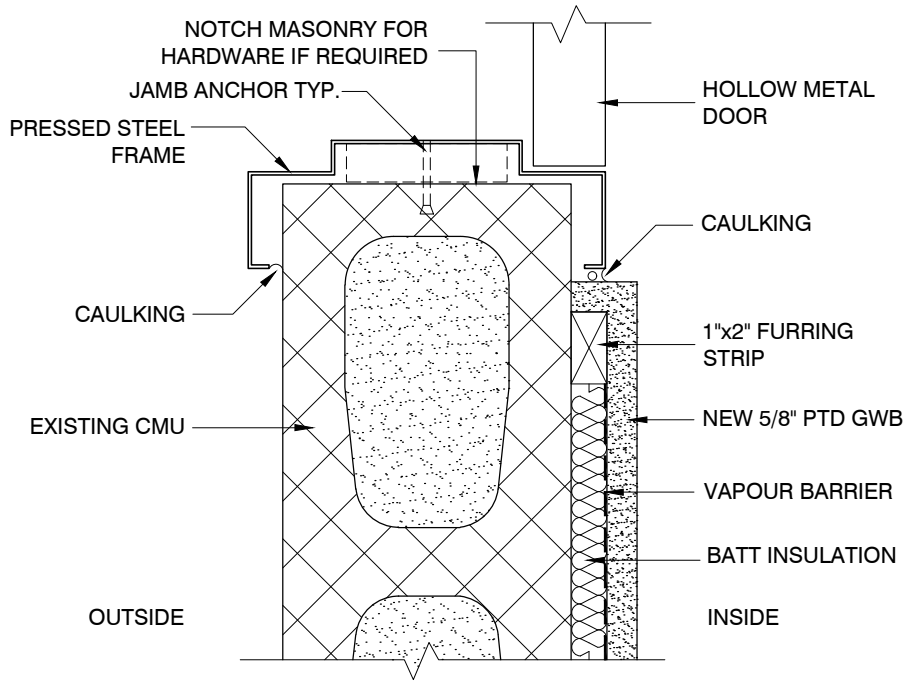


SHEET TITLE

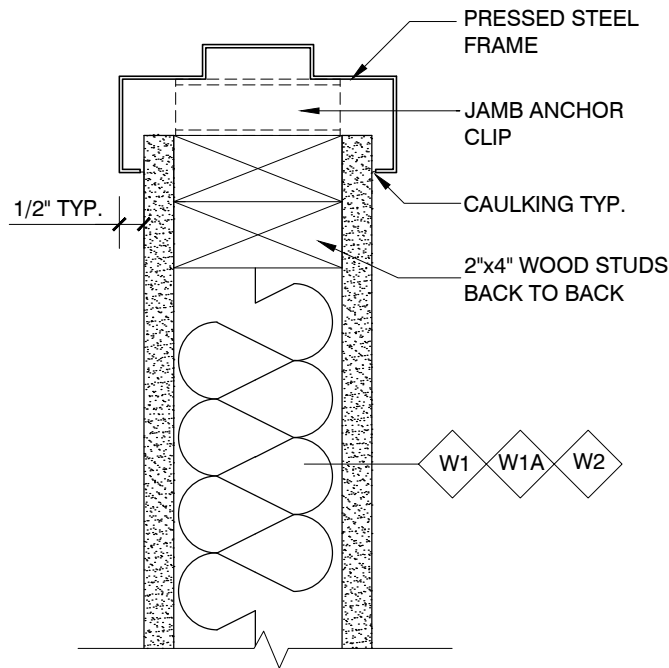
**Window Details at  
Concrete Block Wall**

**SK-2**

REVISION No. 1  
DRAWN RS  
CHECKED CA  
SCALE 3" = 1'  
DATE September 22, 2016  
PRINTED September 27, 2016



2 TYP. EXTERIOR DOOR JAMB DETAIL @ CMU  
SK-3 3" = 1'-0"



1 TYP. INTERIOR DOOR JAMB DETAIL @ GWB  
SK-3 3" = 1'-0"

PROJECT TITLE

Hall  
Community  
Sunnyside

Surrey, BC V4A1W8  
1845 154th Street

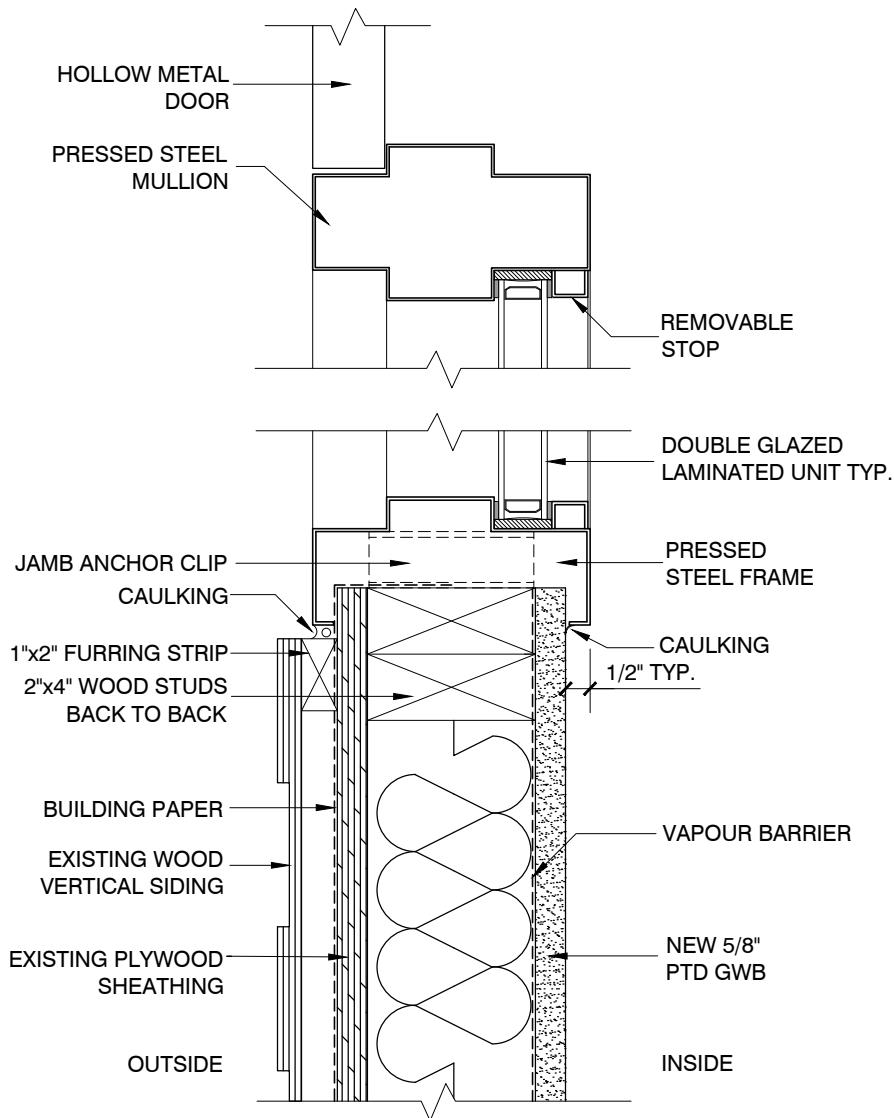


SHEET TITLE

Door Jamb  
Details

SK-3

REVISION No. 1  
DRAWN RS  
CHECKED CA  
SCALE 3" = 1'  
DATE September 22, 2016  
PRINTED September 27, 2016



1 TYP. EXTERIOR DOOR JAMB & SIDELITE DETAIL @ GWB  
 SK-4 3" = 1'-0"

PROJECT TITLE

**Hall  
Community  
Sunnyside**

Surrey, BC V4A1W8  
1845 154th Street

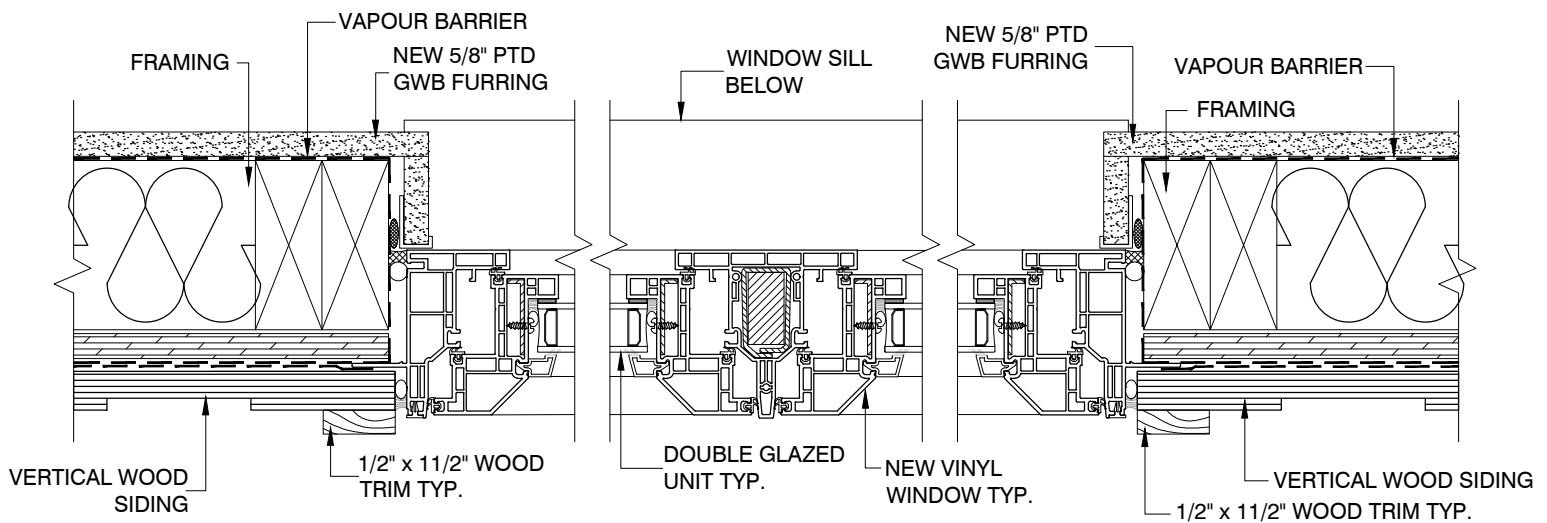


SHEET TITLE

**Door Jamb  
and Sidelite  
Detail**

**SK-4**

REVISION No. 1  
 DRAWN RS  
 CHECKED CA  
 SCALE 3" = 1'  
 DATE September 22, 2016  
 PRINTED September 27, 2016



1 TYP. WINDOW JAMB DETAIL @ GWB  
SK-5 3" = 1'-0"

PROJECT TITLE

**Hall  
Community  
Sunnyside**

Surrey, BC V4A1W8  
1845 154th Street

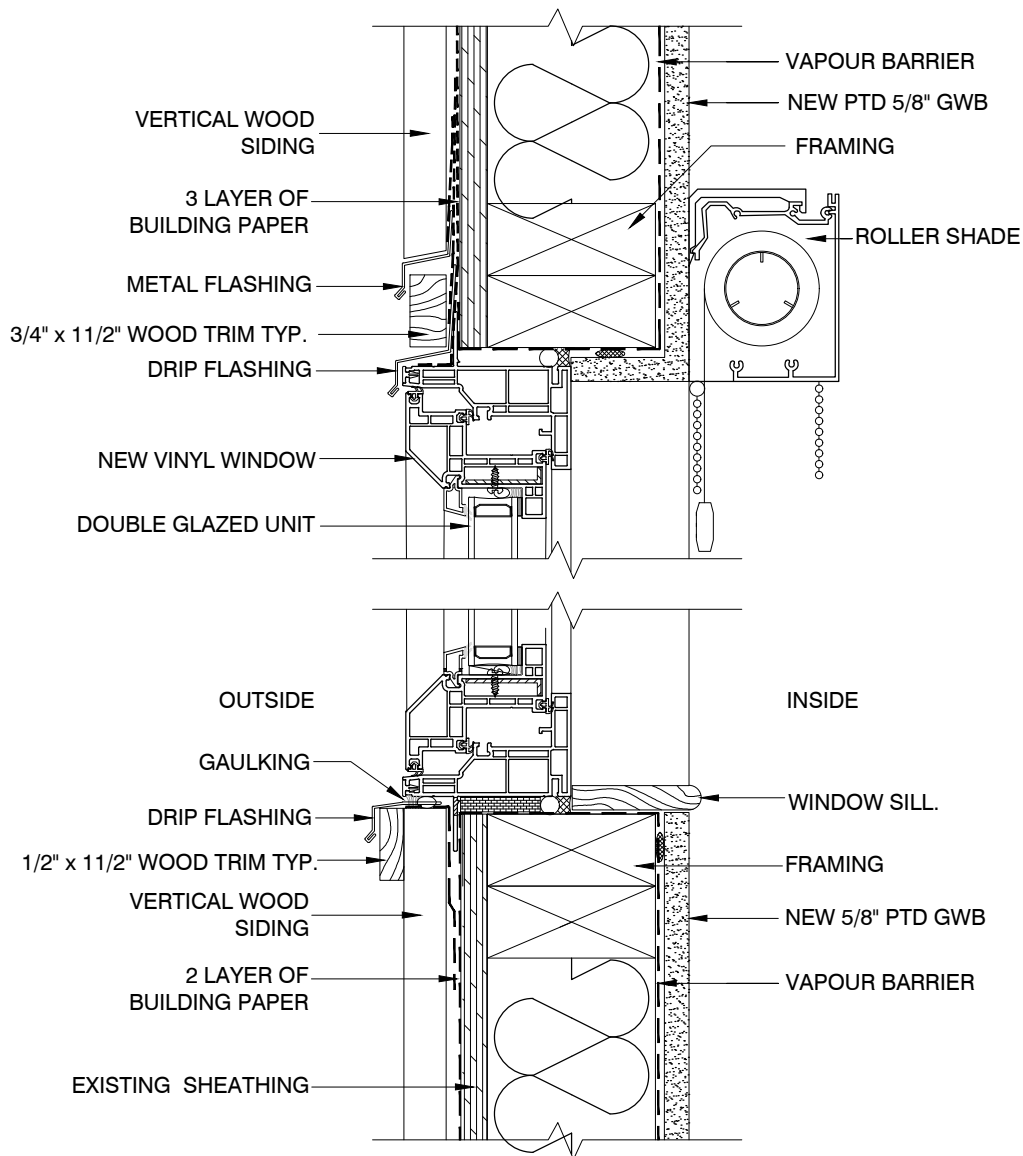


SHEET TITLE

**Exterior  
Window Jamb  
Detail**

**SK-5**

REVISION No. 1  
DRAWN RS  
CHECKED CA  
SCALE 3" = 1'  
DATE September 22, 2016  
PRINTED September 27, 2016



1 TYP. WINDOW HEAD & SILL DETAIL @ GWB  
 SK-6 3" = 1'-0"

PROJECT TITLE

**Hall  
Community  
Sunnyside**

Surrey, BC V4A1W8  
1845 154th Street



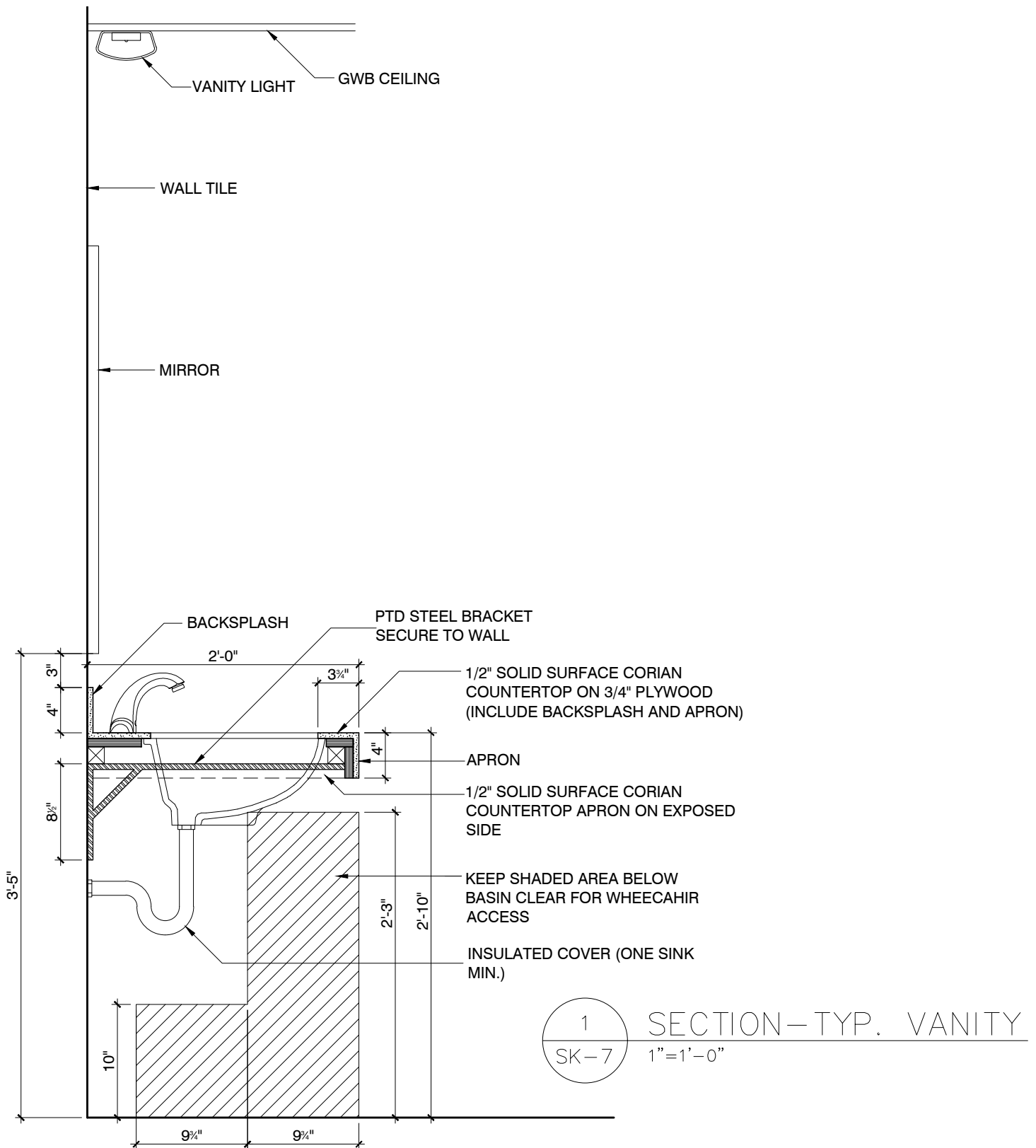
SHEET TITLE

**Exterior  
Window Head  
& Sill Detail**

**SK-6**

REVISION No. 1  
 DRAWN RS  
 CHECKED CA  
 SCALE 3" = 1'  
 DATE September 22, 2016  
 PRINTED September 27, 2016





PROJECT TITLE

**Hall  
Community  
Sunnyside**

Surrey, BC V4A1W8  
1845 154th Street



SHEET TITLE

**Washroom  
Vanity Sink  
Section Detail**

**SK-7**

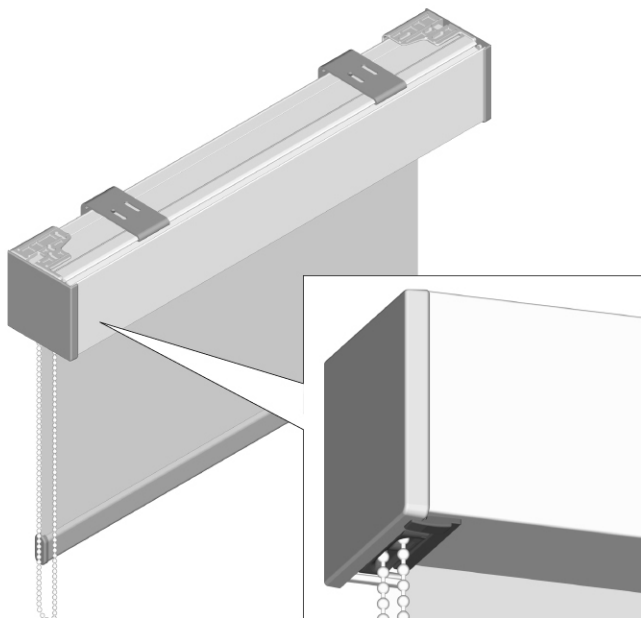
REVISION No. 1  
DRAWN RS  
CHECKED CA  
SCALE 1"=1'  
DATE September 22, 2016  
PRINTED September 27, 2016

# Roller Blind 5-51

## CHAIN OPERATED ROLLER BLIND BACK ROLLING WITH CASSETTE M

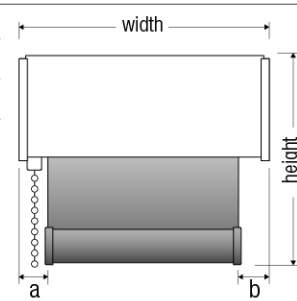
### Description

- Die cast end brackets with plastic covers
  - Covers of brackets in grey, black or white to match colour of cassette
- 2-part extruded cassette with closed bottom with complete maintenance access
  - In natural anodised, or powder coated black or white finish
- Pre-assembled blind installed on hidden aluminium clip-in brackets
- Leveling function to limit skewing
  - Optional no leveler
- Patented clutch for safe operation in grey, black or white
- Universal clutch for left and right hand operation
- High tensile stainless steel endless ball chain
  - Optional plastic ball chain in grey, black or white
- Spring-loaded end plug for easy installation and maintenance
- Aluminium extruded tubes
  - Optional oval shaped bottom rail
- Back rolling
- UV stable parts
- High quality fabric according to technical specifications

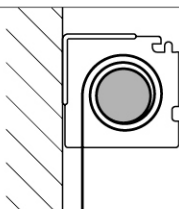


### LIGHT GAPS (mm)

Operation side	20	a
Bearing side	24	b



### BACK ROLLING

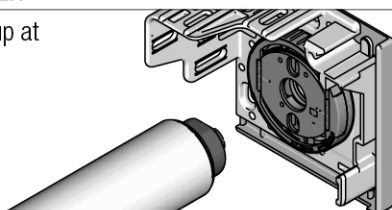


### SIZE LIMITATIONS\*

Min. width	300 mm
Max. width	3600 mm
Min. height	500 mm
Max. height	4000 mm
Max. surface	single blind; 10 m <sup>2</sup> coupled blinds; 13 m <sup>2</sup>

### ADD-ON LEVELER

Ensures rolling up at right angles

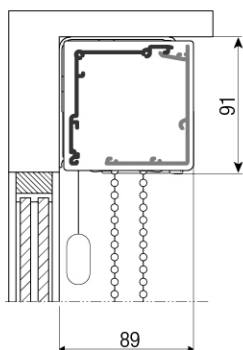


### MAXIMUM LOAD (KG)\*

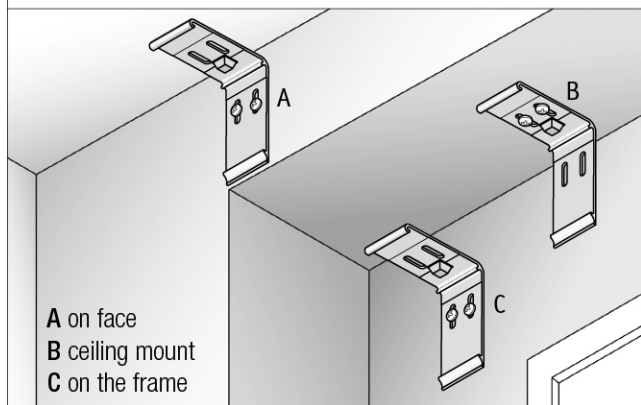
Type	Tube 31	Tube 37	Tube 50
Gear 1:1 x 1	2.5	-	-
Gear 1:1 x 2	4.7	4.0	3.0
Gear 1.75:1	5.8	5.0	3.7

Maximum load = bottom rail + (optional) additional weight + fabric

### SIDE VIEW



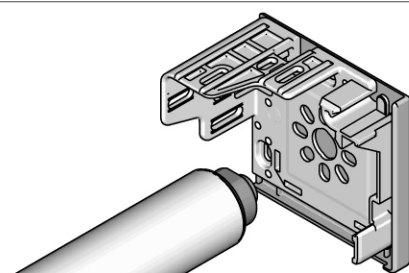
### INSTALLATION POSITION



# OPTIONS Roller Blind 5-51

The technical terms on this page are clarified in the glossary in the back.

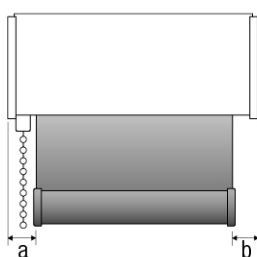
## LEVELER



No leveler

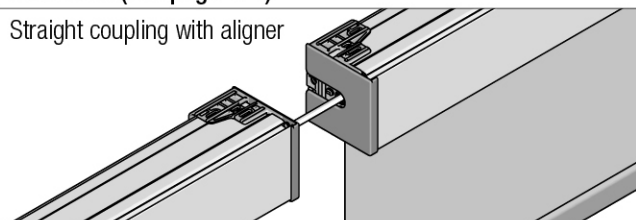
### LIGHT GAPS (mm)

Operation side	20	a
Bearing side		
Add-on leveler (std)	24	b
No leveler	15	b



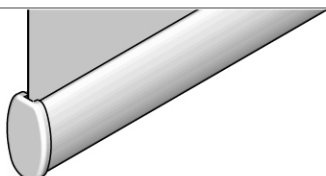
## COUPLING (see page 174)

Straight coupling with aligner

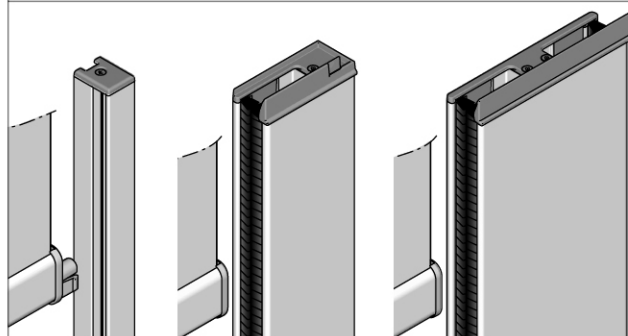


## OVAL BOTTOM RAIL

Not applicable with side guiding profiles



## SIDE GUIDING; PROFILES



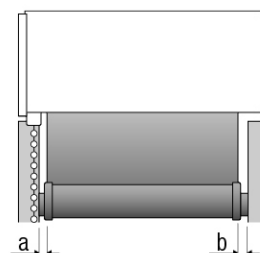
SCG 20

SCG 64

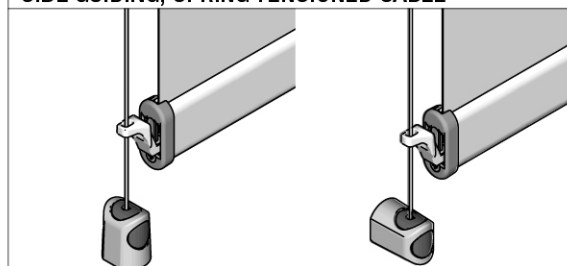
SCG 64 coupled

### LIGHT GAPS (mm); SCG 20

Operation side	5	a
Bearing side		
Add-on leveler (std)	5	b
No leveler	5	b



## SIDE GUIDING; SPRING TENSIONED CABLE

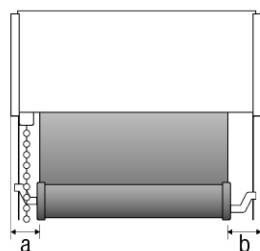


In recess

On face

### LIGHT GAPS (mm)

Operation side	20	a
Bearing side		
Add-on leveler	24	b
No leveler	20	b



\*Size limitations and maximum load depend on operation type and are further calculated on the basis of a fabric with; weight = 345 gr/m<sup>2</sup>, thickness = 0.44 mm. Maximum deflection of tube 31 = 3 mm, tube 37 = 4 mm, tube 50 = 5 mm.

## Hunter Douglas EOS® 500 Roller Blind

### Medium 5-50 Series

#### Square Cassette - Back Roll



1	Brand	Hunter Douglas
2	System	Roller Blind EOS® 500 Medium 5-50 Series

#### Fabric

3	Fabric description	
4	Fabric color	
5	Fabric properties	<ul style="list-style-type: none"> <li>- Transparency / openness</li> <li>- Fenestration data</li> <li>- Fire resistance rating</li> <li>- Environmental requirements</li> <li>- Other</li> </ul>

#### Dimensions

6	Width (mm)	
7	Height (mm)	
8	Quantity (pcs)	

#### Model

9	System brackets	<p>Solid die cast zamac side brackets. Colour:</p> <ul style="list-style-type: none"> <li>- Standard powder coated: <ul style="list-style-type: none"> <li>o White HD 0199 (≈ RAL 9016)</li> <li>o Silver grey HD 7052 (≈ RAL 9006)</li> <li>o Black HD 1858 (≈ RAL 9005)</li> <li>o Customer specific</li> </ul> </li> <li>- Alternatively zinc plated HD 0003</li> </ul> <p>Partly concealed aluminium clip-in bracket with bumper sticker to fit cassette to wall or ceiling. Colour:</p> <ul style="list-style-type: none"> <li>- Natural anodized aluminium HD 7052</li> <li>- Powder coated: <ul style="list-style-type: none"> <li>o White HD 0199 (≈ RAL 9016)</li> <li>o Black HD 1858 (≈ RAL 9005)</li> <li>o Customer specific</li> </ul> </li> </ul>
10	System profiles	<p>L-shaped back and top covering base profile 73 x 84 mm. L-shaped front and bottom covering profile 84 x 58 mm. Extruded aluminium, alloy 6060-T66-EN755. Colour:</p> <ul style="list-style-type: none"> <li>- Natural anodized aluminium HD 7052, or</li> <li>- Powder coated: <ul style="list-style-type: none"> <li>o White HD 0199 (≈ RAL 9016)</li> <li>o Black HD 1858 (≈ RAL 9005)</li> <li>o Customer specific colour</li> </ul> </li> </ul>

11	Tube	<p>Standard mill finish extruded aluminium, alloy 6060-T66-EN755, 1.6 mm wall thickness, diameter:</p> <ul style="list-style-type: none"> <li>• Internal Ø 31 mm, external 34.2 mm with tape</li> <li>• Internal Ø 37 mm, external 40.2 mm with spline, alternatively tape</li> <li>• Internal Ø 50 mm, external 53.2 mm with spline, alternatively tape</li> </ul> <p>according to fabric, blind size and operation, unless differently specified. Alternatively painted roll formed steel, 0.62 mm wall thickness, colour light grey HD 0606, diameter:</p> <ul style="list-style-type: none"> <li>• Internal Ø 36.9 mm, external Ø 38.1 mm</li> </ul> <p>available for restricted blind sizes and operations</p>
12	Bottom rail	<ul style="list-style-type: none"> <li>- Standard stadium shape 13x30 mm</li> <li>- Alternatively oval shape 16x30 mm for blinds without side channels</li> <li>- Aluminium extrusion alloy 6060-T66-EN755 weight 390 g/m</li> <li>- Additional steel weight of 300 g/m optional</li> <li>- Not covered with fabric, colour scheme according to: <ul style="list-style-type: none"> <li>• Natural anodized aluminium HD 7052, or</li> <li>• Powder coated: <ul style="list-style-type: none"> <li>- White HD 0199 (≈ RAL 9016)</li> <li>- Black HD 1858 (≈ RAL 9005)</li> <li>- Customer requirement</li> </ul> </li> </ul> </li> </ul>
13	Plastic parts	<p>Colour coordinated miscellaneous UV-stable compounds according to:</p> <ul style="list-style-type: none"> <li>• White HD 0155</li> <li>• Grey HD 0952</li> <li>• Black HD 1858</li> <li>• Customer requirement</li> </ul>

### Operation

14	Operation type	<p><b>Model 5-51</b> Side control with ball chain</p> <p><b>Model 5-55</b> Side control with crank</p> <p><b>Model 5-56</b> Electric operation with motor and switch, remote or group control</p> <p><b>Model 5-57</b> Blind coupled to one of the previous models</p>
15	Operation side	<ul style="list-style-type: none"> <li>- Ball chain right or left</li> <li>- Crank right, center (with coupling) or left</li> <li>- Motor right or left</li> <li>- Coupled right or left</li> </ul>
16	Operation chain	<ul style="list-style-type: none"> <li>- Self lubricating universal (left or right hand) ball chain operated clutch. Patented with safety pins for secure bracket installation and unlocking pin for quick manual removal. <ul style="list-style-type: none"> <li>• Gear 1:1 x 1 (light)</li> <li>• Gear 1:1 x 2 (medium)</li> <li>• Gear 1.75:1 (heavy)</li> </ul> </li> </ul> <p>according to blind size, unless differently specified</p> <ul style="list-style-type: none"> <li>- High tensile stainless steel ball chain 4.5 x 6.28 mm</li> <li>- Standard length 3/4 of blind height with chain connector for 1:1 geared clutches, alternatively loops of 500 / 750 / 1,000 / 1,250 / 1,500 / 1,750 / 2,000 / 2,500 / 3,000 or 3500 mm length according to blind size or according to order specification</li> </ul>

		- Alternatively POM-polyester operation chain 4.4 x 6 mm in: <ul style="list-style-type: none"> <li>• White HD 0204</li> <li>• Grey HD 0952</li> <li>• Black HD 1858</li> <li>• Or customer specific colour</li> </ul>
17	Operation crank	- Plastic covered self lubricating metal crank mechanism with 3:1 gear - Aluminium crank wand Ø 15 mm - Standard stretched wand length is blind height minus 320 mm - Alternatively length according to customer specification - Standard fixed, alternatively detachable wand with funnel and wand clip
18	Operation motor	Available motor types: <ul style="list-style-type: none"> <li>• Standard 24 V SOMFY LT28 in tubes 31 or 37</li> <li>• Quiet 230 V Hunter Douglas M 40 in tube 50</li> <li>• Other SOMFY (RTS) motors on request</li> </ul> according to blind size and customer specification
19	Motor controls	In accordance with customer specification

### Installation

20	Installation brackets	Partly concealed aluminium clip-in brackets as previously described fitted with screws provided
21	Spring loaded bearing	Self lubricating spring loaded plastic bearing for easy installation and quick removal. With patented manually adjustable locking ring for crank operated and coupled blinds

### Guiding

22	Cable side guiding (recommended when ratio width:drop < 1:3)	<ul style="list-style-type: none"> <li>▪ Maintenance free spring loaded cable tensioner for permanent tension fitted with bracket</li> <li>▪ High tensile UV stabilized Perlon coated steel wire Ø 1.6 mm</li> <li>▪ Patented design hold down bracket in pearl chrome HD 7060</li> <li>▪ Alternatively patented extended bracket in pearl chrome HD 7060</li> <li>▪ Optional center cable with overlapping bottom rail eyelets for coupled blinds</li> <li>▪ Or alternative customer specified options</li> </ul>
23	Side channel guiding	Extruded aluminium profile, alloy 6060-T66-EN755: <ul style="list-style-type: none"> <li>- SCG20 single open channel 20 x 26 mm</li> <li>- SCG64 single black-out channel 64 x 27 mm with brushes</li> <li>- SCG64 double black-out channel 107 x 27 mm with brushes</li> </ul> Fixation: <ul style="list-style-type: none"> <li>- Standard with clips and screws provided</li> <li>- Alternatively with pre-determined drill holes (with covers for 64)</li> <li>- Alternatively without drill holes (with covers for 64)</li> </ul> Colour: <ul style="list-style-type: none"> <li>- Natural anodized aluminium HD 7052, or</li> <li>- Powder coated:                             <ul style="list-style-type: none"> <li>○ White HD 0199 (≈ RAL 9016)</li> <li>○ Black HD 1858 (≈ RAL 9005)</li> <li>○ Customer specific colour</li> </ul> </li> </ul>

### Leveling

24	Leveler	<p>Tube leveling component attached to bracket to limit skewing or adjust lateral openings. Manual height adjustment of bearing side (+/- 4 mm) with Allen key.</p> <p>Add-on plastic leveler type in colour:</p> <ul style="list-style-type: none"> <li>• White HD 0155</li> <li>• Grey HD 0952</li> <li>• Black HD 1858</li> </ul> <p>or no leveler</p>
----	---------	---

### Rolling

25	Rolling direction	Back rolling only
----	-------------------	-------------------

### Coupling

26	Straight coupling with aligner	<p>Patented fully manually adjustable aligner with steel shaft for easy manual bottom rail alignment of coupled blinds. Suitable for products installed in line up to 15° angle.</p> <p>Standard 130 mm short:</p> <ul style="list-style-type: none"> <li>• For one intermediate bracket</li> <li>• For two intermediate brackets with max 70 mm distance</li> </ul> <p>Alternatively 400 mm long:</p> <ul style="list-style-type: none"> <li>• Two intermediate brackets with max 340 mm distance</li> </ul>
27	Straight coupling with connector	Partly manually adjustable connector with steel shaft up to 15°