



PURCHASING SECTION
13450 – 104 Avenue, Surrey, BC V3T 1V8
Tel: 604-590-7274 Fax: 604-599-0956
E-mail: purchasing@surrey.ca

ADDENDUM No. 2

REQUEST FOR QUOTATIONS (RFQ) NO.: 1220-040-2017-123

TITLE: SNOW AND ICE REMOVAL SERVICES
VARIOUS CIVIC FACILITIES

ADDENDUM ISSUE DATE: OCTOBER 18, 2017

REVISED DATE: PREFER TO RECEIVE QUOTATIONS ON OR BEFORE
OCTOBER 19, 2017

INFORMATION FOR CONTRACTORS

This Addendum is issued to provide answers to questions raised by potential Contractors for the above named project, to the extent referenced and shall become a part thereof. No consideration will be allowed for extras due to the Contractor not being familiar with this addendum. This Addendum No. 2 contains nine (9) pages in total.

1. QUESTION & ANSWER

Q1. Section B – 2 Fees & Payments 8: This table looks like a Lump Sum price for each individual location. Could you please clarify; what criteria should consider while calculating price for each individual location because price totally depends upon the amount of snow fall and total area to be cleared off.

A1. Invoices will be submitted to the City for payment of the portion of the Fees relating to the Goods and Services provided in the previous month. The maps attached provide clarity to potential contracts and to assist with estimating the cost of clearing. **For the purpose of pricing assume a single snowfall event of 4 inches of snow. Unit prices for each parking lot would be re-applied at the same cost if there is a request to redo the task as a result of additional accumulations.**

Q2. Are we able to omit pricing for package D?

A2. Yes, you may omit package D in your submission. Refer to page 6 of the RFQ, Section 14 - Multiple Contractors.

Q3. On price page for the RFQ for snow and ice removal at various locations you are asking for cost per service for the different sites/packages as well as call out rates. It is difficult to put a cost per service, as if it is a very heavy snow fall it will take longer to clean then

should it be a light snow fall. Am I to assume you would like for us to make an educated guess as to what we anticipate the average snowfall to be?

- A3. The maps attached provide clarity to potential contracts and to assist with estimating the cost of clearing. **For the purpose of pricing assume a single snowfall event of 4 inches of snow.**

2. REFER TO SCHEDULE A-1 LIST OF SITES.

Delete in its entirety Package A and Package D and replace with the following:

PACKAGE A – SURREY LIBRARIES

SNOW REMOVAL Weekdays 6am - 6:00pm Snow Removal	ICE CONTROL Weekdays 6am - 6:00pm	SNOW REMOVAL Weekends, Holidays, Afterhours	ICE CONTROL Weekends, Holidays, Afterhours
LOCATION		Hours of Operation and Site Specific Details	
Cloverdale Library 5642 176A St, Surrey, BC V3S 4G9		Mon - Thu 9:30am-9:00pm, Fri 9:30am-5:00pm, Sat 10:00am-5:00pm, Sun 1:00pm-5:00pm	
Ocean Park Library 12854 17 Ave, Surrey, BC V4A 1T5		Mon - Thu 9:30am-9:00pm, Fri 9:30am-5:00pm, Sat 10:00am-5:00pm, Sun 1:00pm-5:00pm	
Port Kells Library 7399 122 St, Surrey, BC V3W 5J2		Tue 10:00am-5:00pm, Wed 1:00pm-8:00pm, Thu 1:00pm-5:00pm Fri 1:00pm to 5:00pm, and Sat 12:00pm-5:00pm	

PACKAGE D – SURREY CITY HALL AND OPERATIONS CENTRE

SNOW REMOVAL Weekdays 6am - 6:00pm Snow Removal	ICE CONTROL Weekdays 6am - 6:00pm	SNOW REMOVAL Weekends, Holidays, Afterhours	ICE CONTROL Weekends, Holidays, Afterhours
LOCATION		Hours of Operation and Site Specific Details	
Surrey City Hall 13450 – 104 Avenue		Daily 7:30am – 5:00pm	
City Centre Library 10350 University Dr, Surrey, BC V3T 4B8		Mon – Fri 9:00am – 9:00pm, Sat 10:00am—5:00pm Sun 1:00pm-5:00pm	
Surrey Operations Centre, Works Yard 6651 – 148th Street, Surrey, BC		Daily 7:00am – 5:00pm	

3. REFER TO SCHEDULE A, SPECIFICATIONS OF GOODS AND SCOPE OF SERVICES

ADD: SCHEDULE A-2 MAPS AS ATTACHED TO THIS ADDENDUM #1.

**SCHEDULE A-2
MAPS**

PACKAGE A – SURREY LIBRARIES

Cloverdale Library



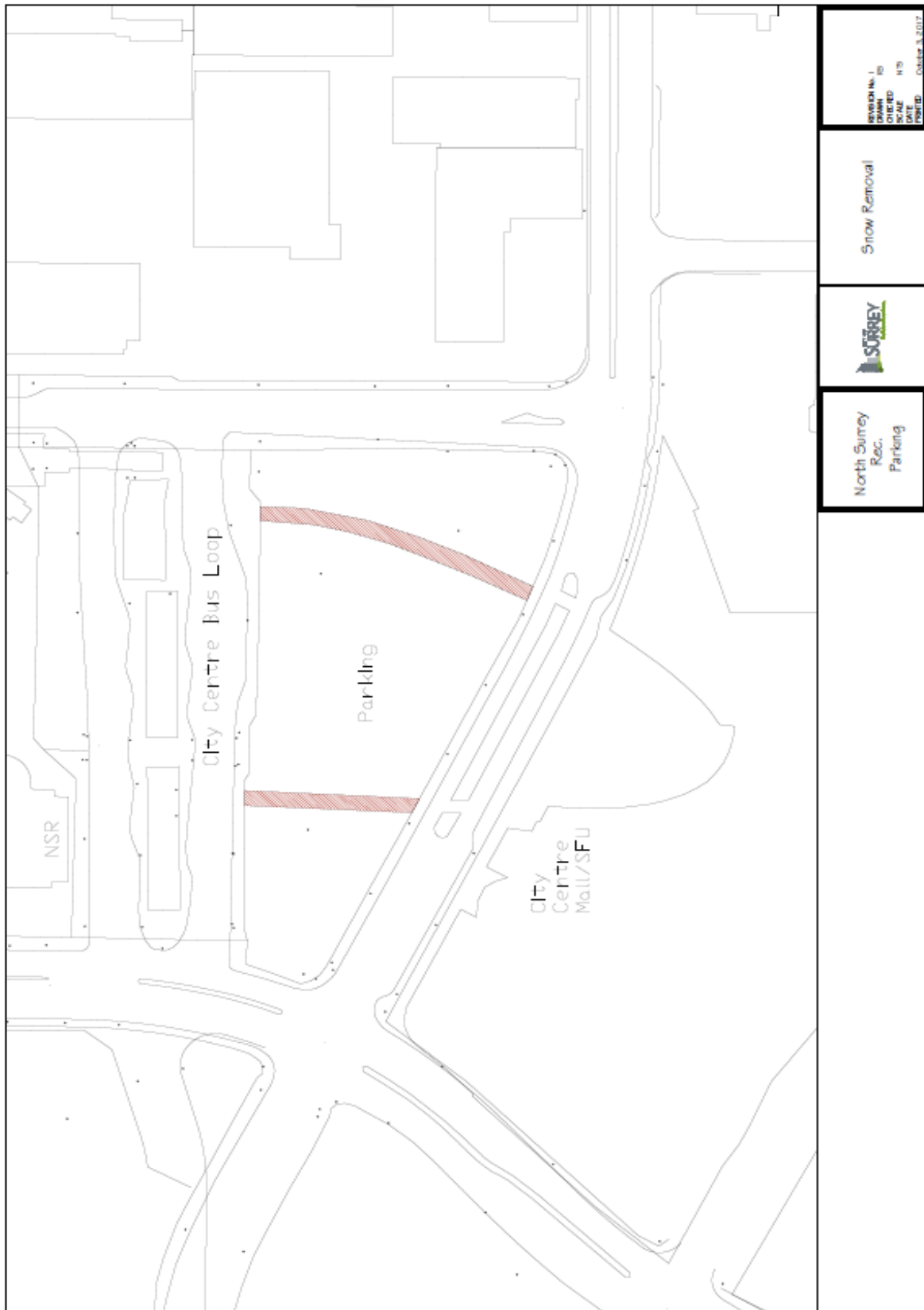
Ocean Park Library

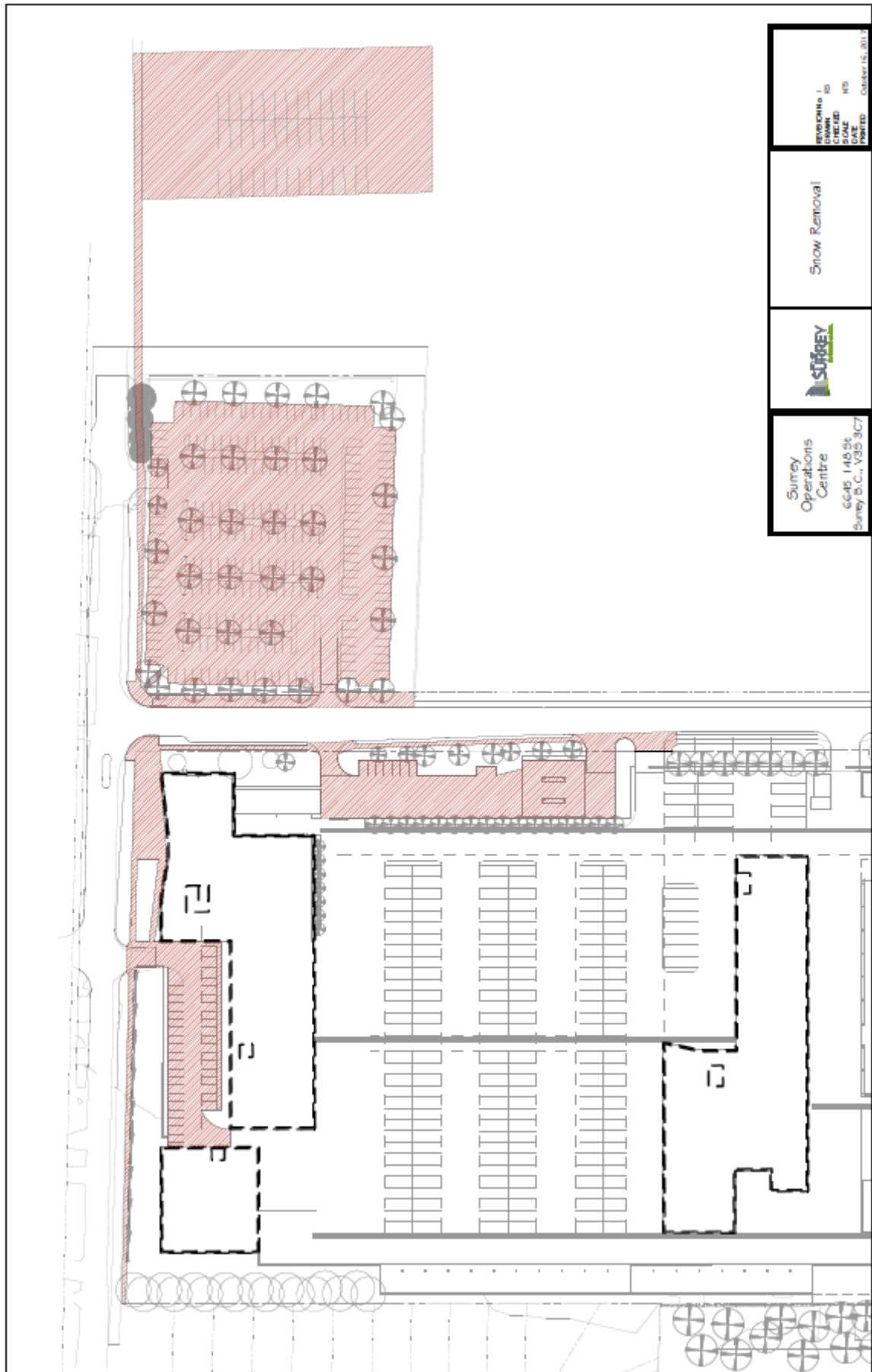


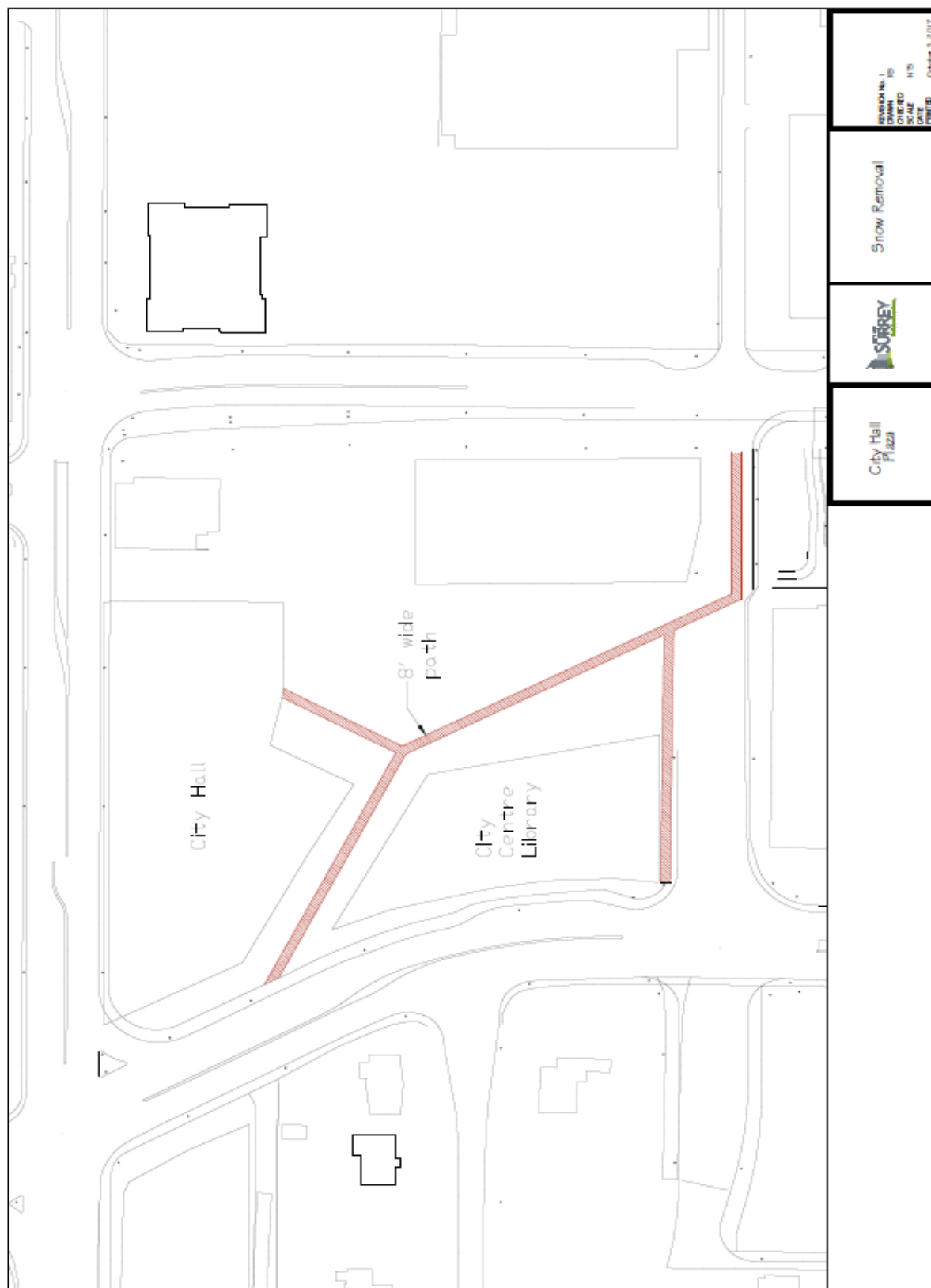
Port Kells Library

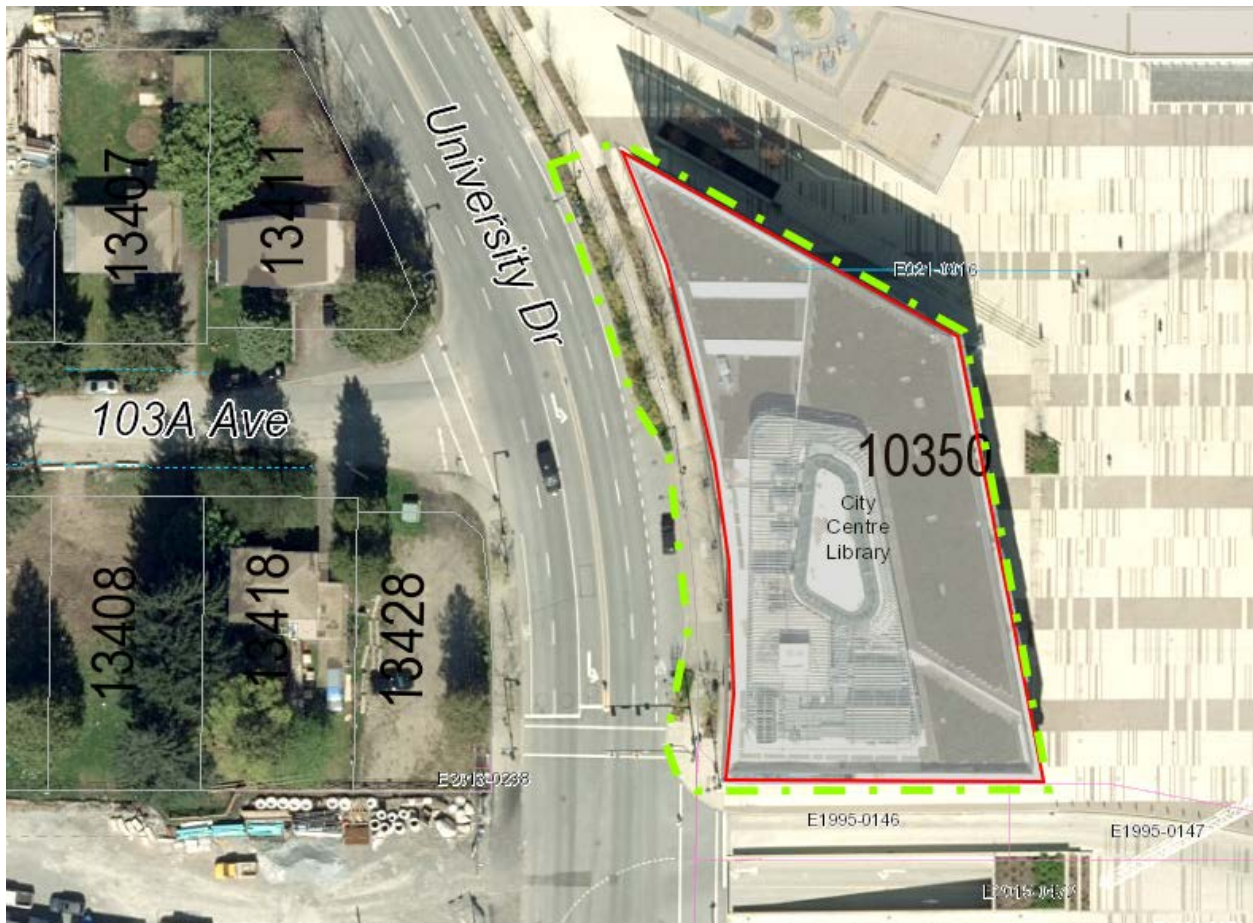


PACKAGE D – SURREY CITY HALL AND OPERATIONS CENTRE









END OF ADDENDUM

All Addenda will become part of the RFQ Documents.
