

CITY OF SURREY

BY-LAW NO. 17532

A by-law to amend "Surrey Zoning By-law, 1993, No. 12000,"
as amended.

.....

The Council of the City of Surrey, in open meeting assembled, ENACTS AS FOLLOWS:

1. Surrey Zoning By-law, 1993, No. 12000, as amended, is hereby further amended pursuant to the provisions of Section 903 of the *Local Government Act*, R.S.B.C. 1996, c.323, as amended, by changing the classification of the following parcels of land, presently shown upon the maps designated as the Zoning Maps and marked as Schedule "A" under Part 3 of Surrey Zoning By-law, 1993, No. 12000, as amended, as follows:

FROM: SINGLE FAMILY RESIDENTIAL ZONE (RF)

TO: SINGLE FAMILY RESIDENTIAL (9) COACH HOUSE ZONE (RF-9C)

Portion of land shown on a Survey Plan attached hereto and forming part of this By-law as Schedule A, certified correct by Mathew Onderwater, B.C.L.S. on the 21st day of September, 2011, and more particularly described as follows:

Portion of Parcel Identifier: 027-361-471 Lot 114 Section 32 Block 1 North Range 1 East New Westminster District Plan BCP33476, containing 2034.7m², called Block A,

(Portion of 17324 - 2 Avenue)

Parcel Identifier: 027-361-489 Lot 115 Section 32 Block 1 North Range 1 East New Westminster District Plan BCP33476

(17334 - 2 Avenue)

FROM: SINGLE FAMILY RESIDENTIAL ZONE (RF)

TO: SINGLE FAMILY RESIDENTIAL (12) ZONE (RF-12)

Portion of Parcel Identifier: 027-361-471 Lot 114 Section 32 Block 1 North Range 1 East New Westminster District Plan BCP33476, containing 642.1m², called Block B,

(Portion of 17324 - 2 Avenue)

2. This By-law shall be cited for all purposes as "Surrey Zoning By-law, 1993, No. 12000, Amendment By-law, 2011, No. 17532."

PASSED FIRST AND SECOND READING on the 28th day of November, 2011.

PUBLIC HEARING HELD thereon on the 12th day of December, 2011.

PASSED THIRD READING on the 23rd day of January, 2012.

RECONSIDERED AND FINALLY ADOPTED, signed by the Mayor and Clerk, and sealed with the Corporate Seal on the 28th day of May, 2012.

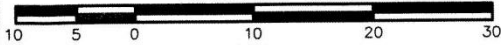
_____MAYOR

_____CLERK

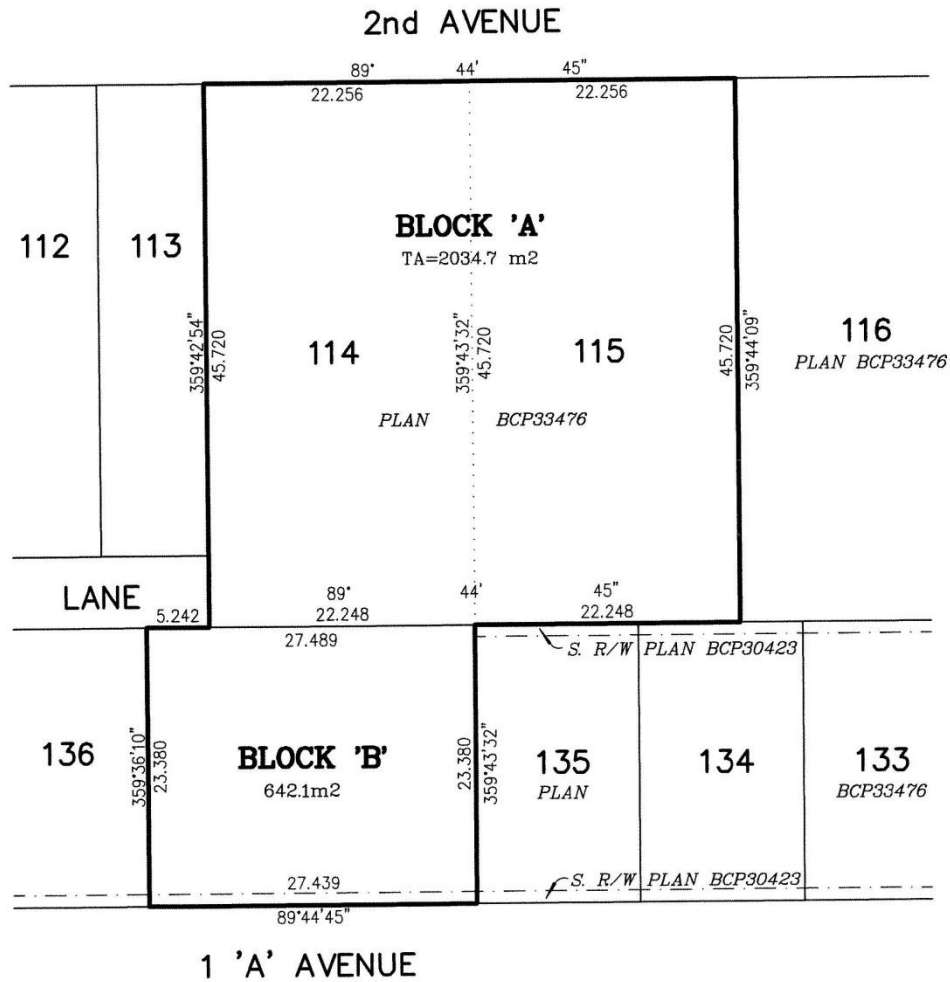
h:\by-laws\adopted bylaws\2012\byl 17532.docx

**SURVEY PLAN TO ACCOMPANY CITY OF SURREY
REZONING BYLAW # 17532 OF LOTS 114 AND 115,
SECTION 32, BLOCK 1 NORTH, RANGE 1 EAST,
N.W.D. PLAN BCP33476.**

SCALE 1:500



All Distances are in Metres.



Certified correct, completed on
the 21st day of September, 2011.

Onderwater Land Surveying Ltd.
B.C. Land Surveyors
#104 - 5830 176 'A' Street
Cloverdale, B.C.
FILE: JS11-110_RZ

*This Plan Lies Within The
Greater Vancouver Regional District*

© B.C.L.S.