

CITY OF SURREY

BY-LAW NO. 16869

A By-law to close and to remove the dedication
of highway of a portion of 140 Street.

.....

WHEREAS pursuant to Subsection 40(1)(a) of the *Community Charter*, S.B.C. 2003, c. 26, the Council may, by by-law, close all or part of a highway that is vested in the municipality to all or some types of traffic;

AND WHEREAS pursuant to Section 40(2) of the *Community Charter*, S.B.C. 2003, c. 26, the Council may, by by-law, remove the dedication of a highway that has been closed by a by-law under Subsection 40(1)(a).

NOW THEREFORE the Council of the City of Surrey in open meeting assembled, ENACTS as follows:

1. That portion of road lying in Section 35, Block 5 North, Range 2 West, New Westminster District, shown outlined in heavy black line on a Reference Plan attached hereto, and forming part of this by-law, duly signed by the Mayor and Clerk, prepared by G.A. Hol, B.C.L.S. on the 19th day of December, 2008, and more particularly described as follows:

That portion of road dedicated on Plan 3352, called Parcel 1
and containing 697.0 square metres,

(hereinafter referred to as that portion of 140 Street)

shall be closed to traffic.

2. The dedication as highway be removed of said portion of 140 Street.
3. This By-law may be cited for all purposes as "Surrey Close and Remove the Dedication of Highway of a Portion of 140 Street at Fraser Highway By-law, 2009, No. 16869".

READ A FIRST, SECOND AND THIRD TIME on the 19th day of January, 2009.

NOTICE OF INTENTION

ADVERTISED on the 23rd and 30th day of January 2009, in the SURREY NOW newspaper.

RECONSIDERED AND FINALLY ADOPTED, signed by the Mayor and Clerk, and sealed with the Corporate Seal on the 9th day of February, 2009.

_____ MAYOR

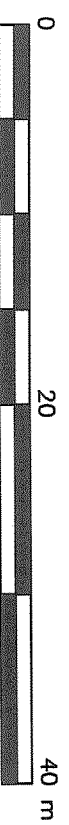
_____ CLERK

REFERENCE PLAN OF PART OF ROAD IN
SECTION 35 BLOCK 5 NORTH RANGE 2 WEST NWD
DEDICATED ON PLAN 3352
TO ACCOMPANY CITY OF SURREY HIGHWAY DEDICATION
CANCELLATION BYLAW NO. 16862

PURSUANT TO SECTION 40 OF THE COMMUNITY CHARTER
AND SECTION 120 OF THE LAND TITLE ACT

BCGS 92G.016

SCALE 1 : 400



ALL DISTANCES ARE IN METRES AND DECIMALS THEREOF
THE INTENDED PLOT SIZE OF THIS PLAN IS 432mm IN WIDTH BY 560mm IN HEIGHT
WHEN PLOTTED AT A SCALE OF 1:400

INTEGRATED SURVEY AREA No. 1. (MUNICIPALITY OF SURREY), MAD83 (CSRS)

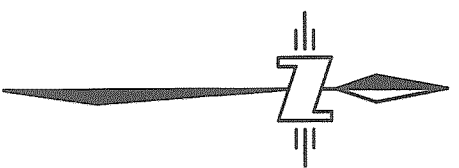
GRID BEARINGS ARE DERIVED FROM OBSERVATIONS
BETWEEN CONTROL MONUMENTS 84H0566 AND 5215

THIS PLAN SHOWS HORIZONTAL, GROUND-LEVEL DISTANCES EXCEPT WHERE
OTHERWISE NOTED. TO COMPUTE GRID DISTANCES, MULTIPLY GROUND-LEVEL
DISTANCES BY COMBINED FACTOR 0.9999921.

LEGEND

SYMBOLS FOUND	DESCRIPTION
●	CONTROL MONUMENT
○	STANDARD IRON POST
○	DENOTES REMAINDER
PCL	DENOTES PARCEL
m2	DENOTES SQUARE METERS(S)
PP	DENOTES POSTING PLAN
(c)	DENOTES CALCULATED
NF	DENOTES NOTHING FOUND

NOTE: SOME LINES AND SYMBOLS
MAY BE EXAGGERATED FOR CLARITY

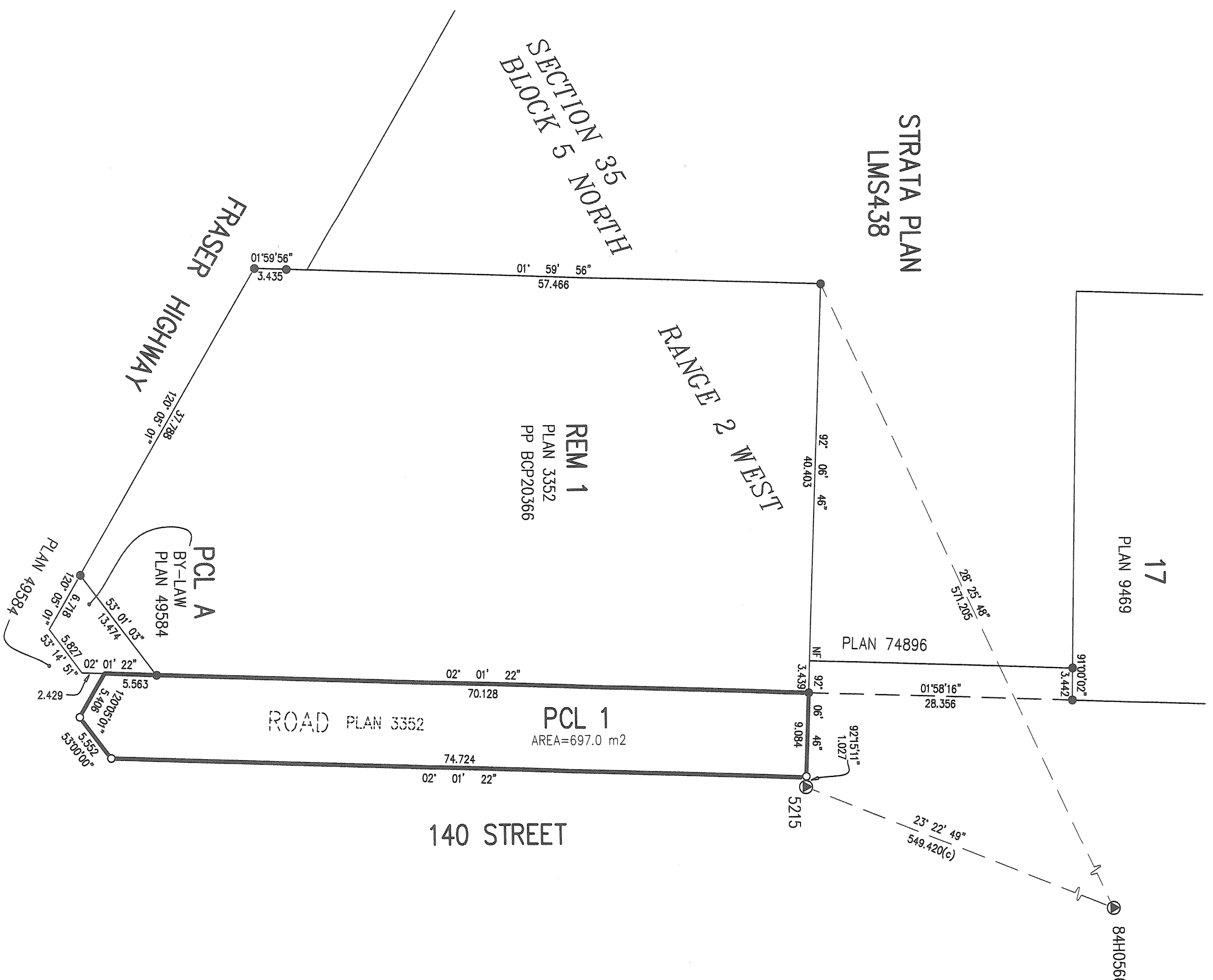


PLAN BCP _____

DEPOSITED IN THE LAND TITLE OFFICE
AT NEW WESTMINSTER, B.C.

THIS _____ DAY OF _____

REGISTRAR



THE CITY OF SURREY

MAYOR: DIANNE WATTS

CITY CLERK: MARG JONES

WITNESS AS TO SIGNATURE OF THE CITY CLERK
(PRINT NAME CLEARLY NEAR SIGNATURE)

ADDRESS OF WITNESS

ADDRESS OF WITNESS

OCCUPATION OF WITNESS

I, G.A. HOI, A BRITISH COLUMBIA LAND SURVEYOR OF SURREY, IN BRITISH COLUMBIA, CERTIFY THAT I WAS PRESENT AT AND PERSONALLY SUPERINTENDED THE SURVEY REPRESENTED BY THIS PLAN, AND THAT THE SURVEY AND PLAN ARE CORRECT. THE FIELD SURVEY WAS COMPLETED ON THE 19th DAY OF DECEMBER, 2008. THE PLAN WAS COMPLETED AND CHECKED, AND THE CHECKLIST FILED UNDER #91530, ON THE 19th DAY OF DECEMBER, 2008.

THIS PLAN LIES WITHIN THE GREATER VANCOUVER REGIONAL DISTRICT - CITY OF SURREY

MELHANNNEY ASSOCIATES
LAND SURVEYING LTD.
13160 88th AVENUE
SURREY, BC V3W 3K3
TEL: 604-596-0391
FILE: 2112-07465-02R1