

# SOUTH SURREY COMMUNITY PHOTO GALLERY

## South Surrey Recreation and Arts Centre



14601 20 Avenue



Medium Room | 960 sq. ft.



Medium Room

## Elgin Hall



14250 Crescent Road



Hall Interior | 3465 sq. ft.



## Kwomais Lodge



1367 128th Street



Hall Interior | 2260 sq. ft.



Kitchen

# SOUTH SURREY COMMUNITY PHOTO GALLERY



## Sanford Hall



1367 128th Street



Hall Interior | 2882 sq. ft.



Kitchen

## Sunnyside Hall | Limited Availability



1845 154 Street



Hall Interior | 3222 sq. ft.



Kitchen

## Stewart Farm



13723 Crescent Rd



Stewart Hall | 750 sq. ft.



Pole Barn | 700 sq. ft.

# SOUTH SURREY COMMUNITY PHOTO GALLERY

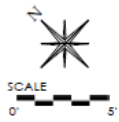
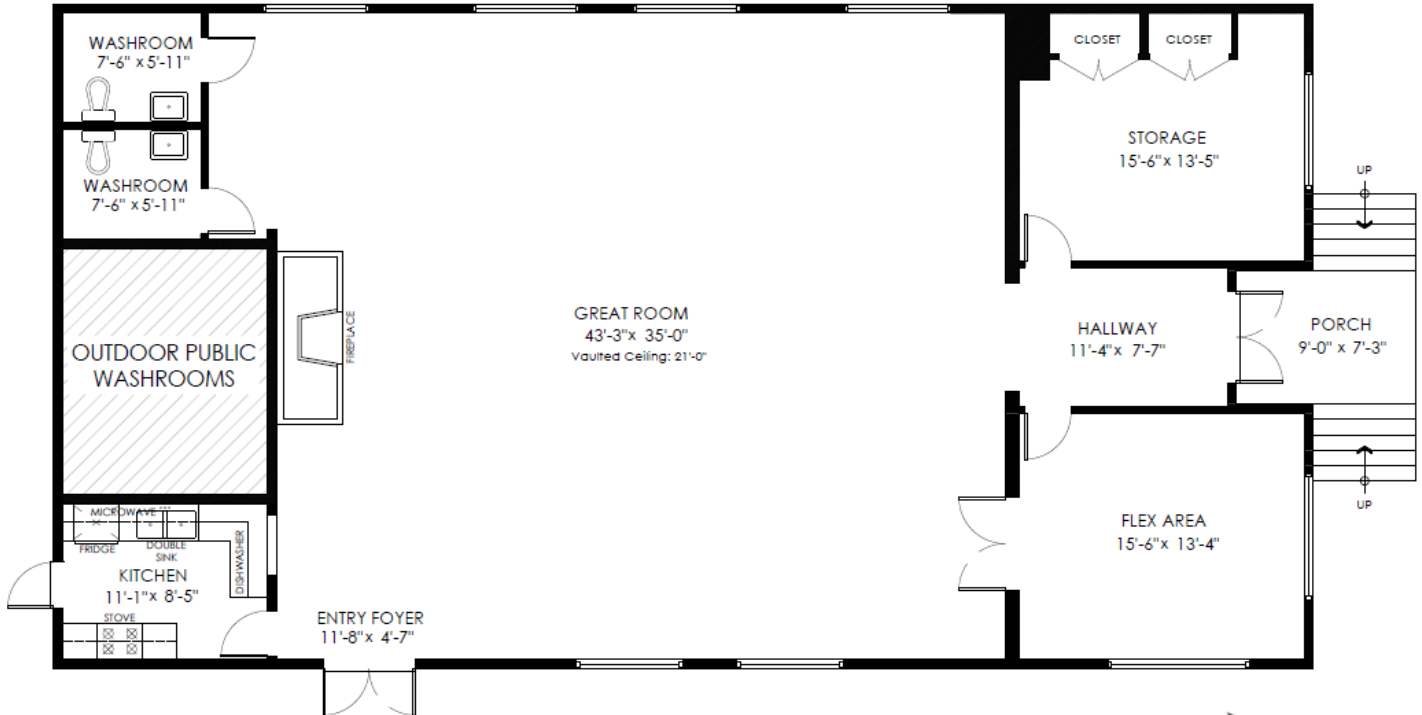


## Kwomais Lodge 1367 128 St, Surrey

Floor Area: 2,260 sq.ft.

Porch: 71 sq.ft.

Ceiling Height: 8'-3"



Measuring, Design & Permits | 604-876-3738

E&O Insured for \$1,000,000. Total square foot calculated to gross unit area SQFT based on interior measurements to exterior walls, not taken from original blueprints, may include unfinished area. [www.DraftOnSite.com](http://www.DraftOnSite.com)



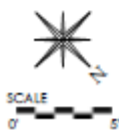
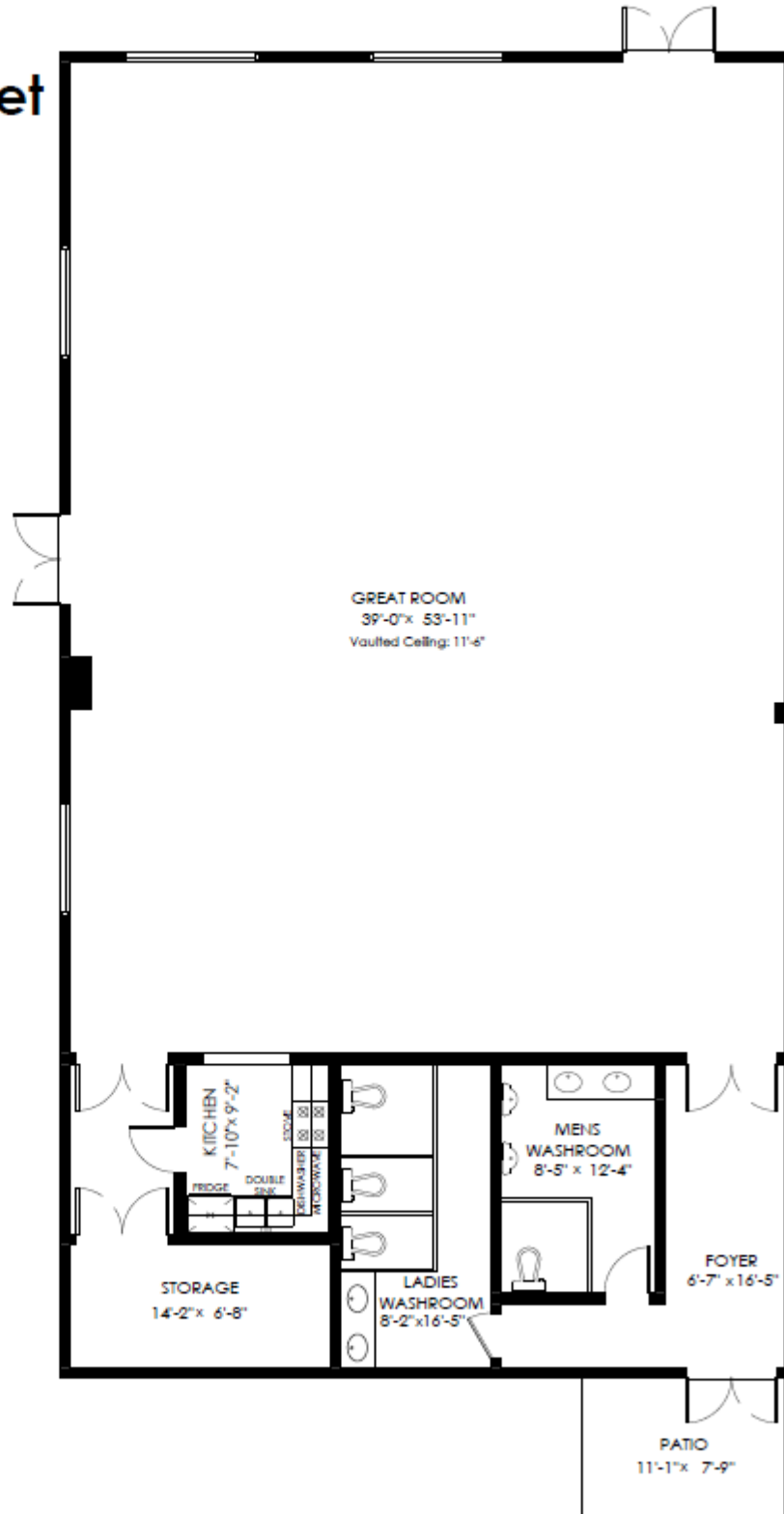
# SOUTH SURREY COMMUNITY PHOTO GALLERY

## Sanford Hall 1367 128 Street

Floor Area: 2,882 sq.ft.

Patio: 86 sq.ft.

Ceiling Height: 8'-3"



Measuring, Design & Permits | 604-876-3738

# SOUTH SURREY COMMUNITY PHOTO GALLERY

## Sunnyside Hall 1845 154 Street

Floor Area: **3,222 sq.ft.**

Porch: **126 sq.ft.**

Ceiling Height: **8'-4"**

