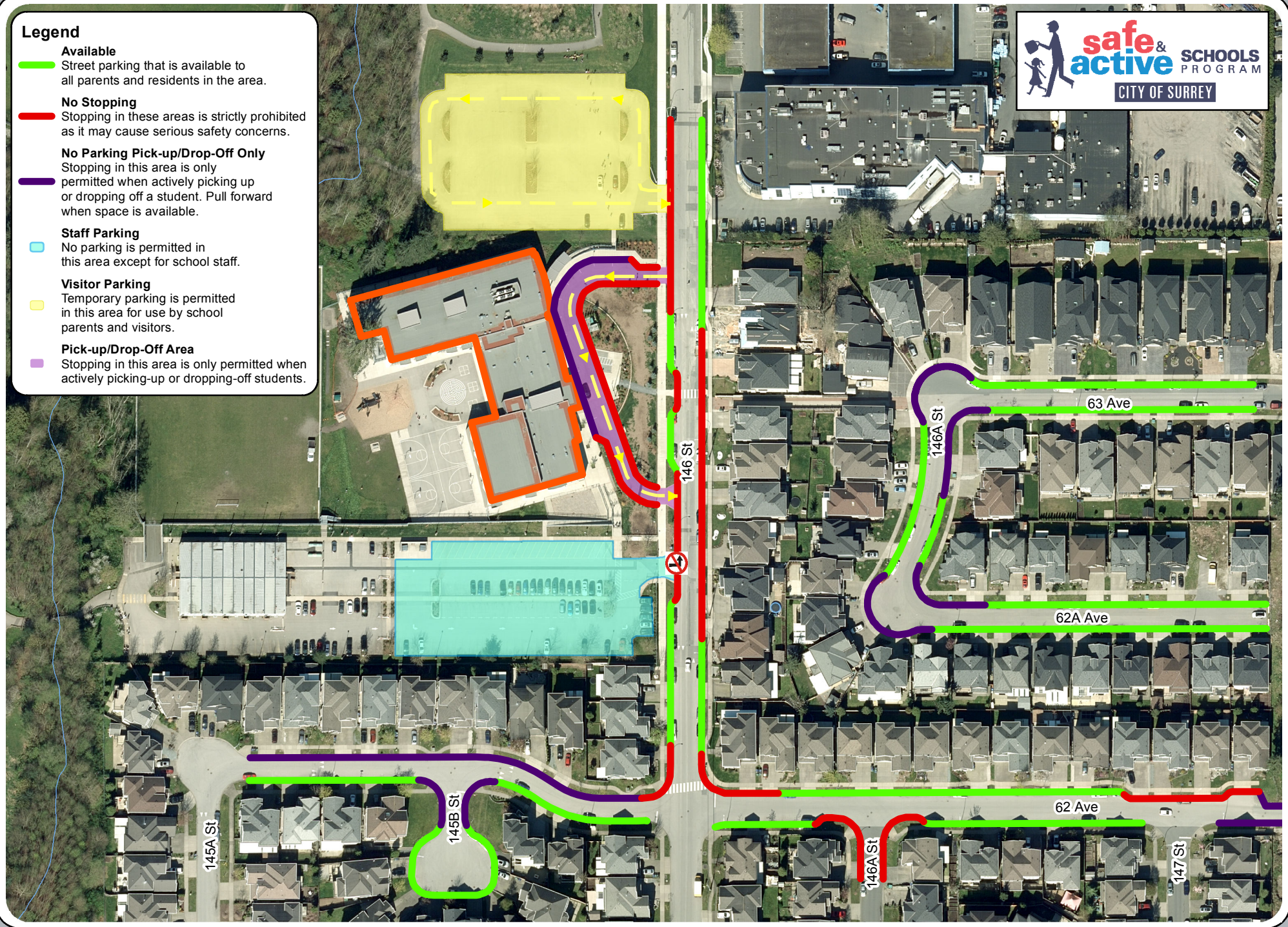


- Legend**
- █ **Available**
Street parking that is available to all parents and residents in the area.
 - █ **No Stopping**
Stopping in these areas is strictly prohibited as it may cause serious safety concerns.
 - █ **No Parking Pick-up/Drop-Off Only**
Stopping in this area is only permitted when actively picking up or dropping off a student. Pull forward when space is available.
 - █ **Staff Parking**
No parking is permitted in this area except for school staff.
 - █ **Visitor Parking**
Temporary parking is permitted in this area for use by school parents and visitors.
 - █ **Pick-up/Drop-Off Area**
Stopping in this area is only permitted when actively picking-up or dropping-off students.



Goldstone Park Elementary Parking Guide

The data provided is compiled from various sources and IS NOT warranted as to its accuracy or sufficiency by the City of Surrey. This information is provided for information and convenience purposes only. Lot sizes, legal descriptions and encumbrances must be confirmed at the Land Title Office.