

CITY OF SURREY

BYLAW NO. 21044

A Bylaw to close and to remove the dedication
of a highway of portions of Lane and Road
.....

WHEREAS pursuant to Subsection 40(1)(a) of the *Community Charter*, S.B.C. 2003, c. 26, the Council may, by bylaw, close all or part of a highway that is vested in the municipality to all or some types of traffic;

AND WHEREAS pursuant to Section 40(2) of the *Community Charter*, S.B.C. 2003, c. 26, the Council may, by bylaw, remove the dedication of a highway that has been closed by a bylaw under Subsection 40(1)(a).

NOW, THEREFORE the Council of the City of Surrey ENACTS as follows:

1. That portions of Lane and Road lying in Block "C", Section 20, Block 5 North, Range 2 West NWD, Plan 1556 shown outlined in heavy black line on a Reference Plan EPP116796 attached hereto, prepared by Kenneth W. Schuurman, B.C.L.S. on the 28th day of October, 2023, and described as follows:

That portion of Lane labelled Lane to be closed containing 216.2 square metre.

That portion of Road labelled Road to be closed containing 2,142.7 square metre.

(collectively containing 2,358.9. square metre)

(hereinafter referred to as that portions of Lane and Road)

shall be closed to traffic.

2. The dedication as highway be removed of said portions of Lane and Road.
3. This Bylaw may be cited for all purposes as "Surrey Close and Remove the Dedication of Highway of a Portion of Lane Adjacent to 10502, 10510, and 10520 – 124 Street and 12453 – 105 Avenue; and a Portion of Road Adjacent to 10502 – 124 Street, 10529 – 125 Street, 12409 – 104 Avenue, and 12453 and 12463 – 105 Avenue, Bylaw, 2023, No. 21044".

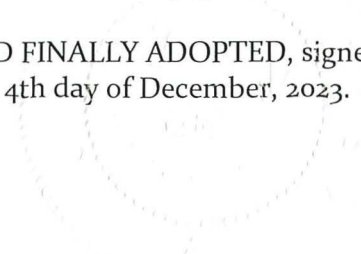

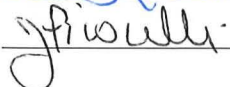
PASSED FIRST READING on the 20th day of November, 2023.

PASSED SECOND READING on the 20th day of November, 2023.

PASSED THIRD READING on the 20th day of November, 2023.

NOTICE OF INTENTION ADVERTISED on the 23rd and 30th day of November 2023, in the THE SURREY NOW LEADER newspapers.

RECONSIDERED AND FINALLY ADOPTED, signed by the Mayor and Clerk, and sealed with the Corporate Seal on the 4th day of December, 2023.


 MAYOR
 CLERK

REFERENCE PLAN TO ACCOMPANY CITY OF SURREY BYLAW NO 21044
 TO CLOSE PART OF ROAD DEDICATED ON PLAN 1556
 BLOCK "C", SECTION 20, BLOCK 5 NORTH, RANGE 2 WEST,
 NEW WESTMINSTER DISTRICT

PLAN EPP116796

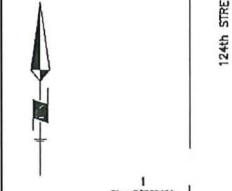
Pursuant To Section 120 of the Land Title Act and
 Section 40 of the Community Charter
 B.C.G.S. 926.017



All distances are in metres
 The intended size of this plan is 600mm
 in width by 850mm in height (0 Size) when
 printed at a scale of 1:500
 Intersected Survey Area No. 1
 City of Surrey, NS083 (CPRS) 4.0.D.B.C.1.V.050
 This plan shows horizontal ground level distances,
 unless otherwise specified, in metric and distances,
 multiple ground level distances by the average
 elevation factor of 0.999791. The average correction
 factor has been determined based on geodetic control
 monuments 5352 and 5354.
 Grid bearings are derived from geodetic control
 monuments 5352 and 5354 and are
 referred to the central meridian of UTM zone 10.
 The UTM coordinates and estimated absolute
 accuracy achieved have been derived from the
 current published coordinates and standard
 deviations for geodetic control monuments 5352
 and 5354.

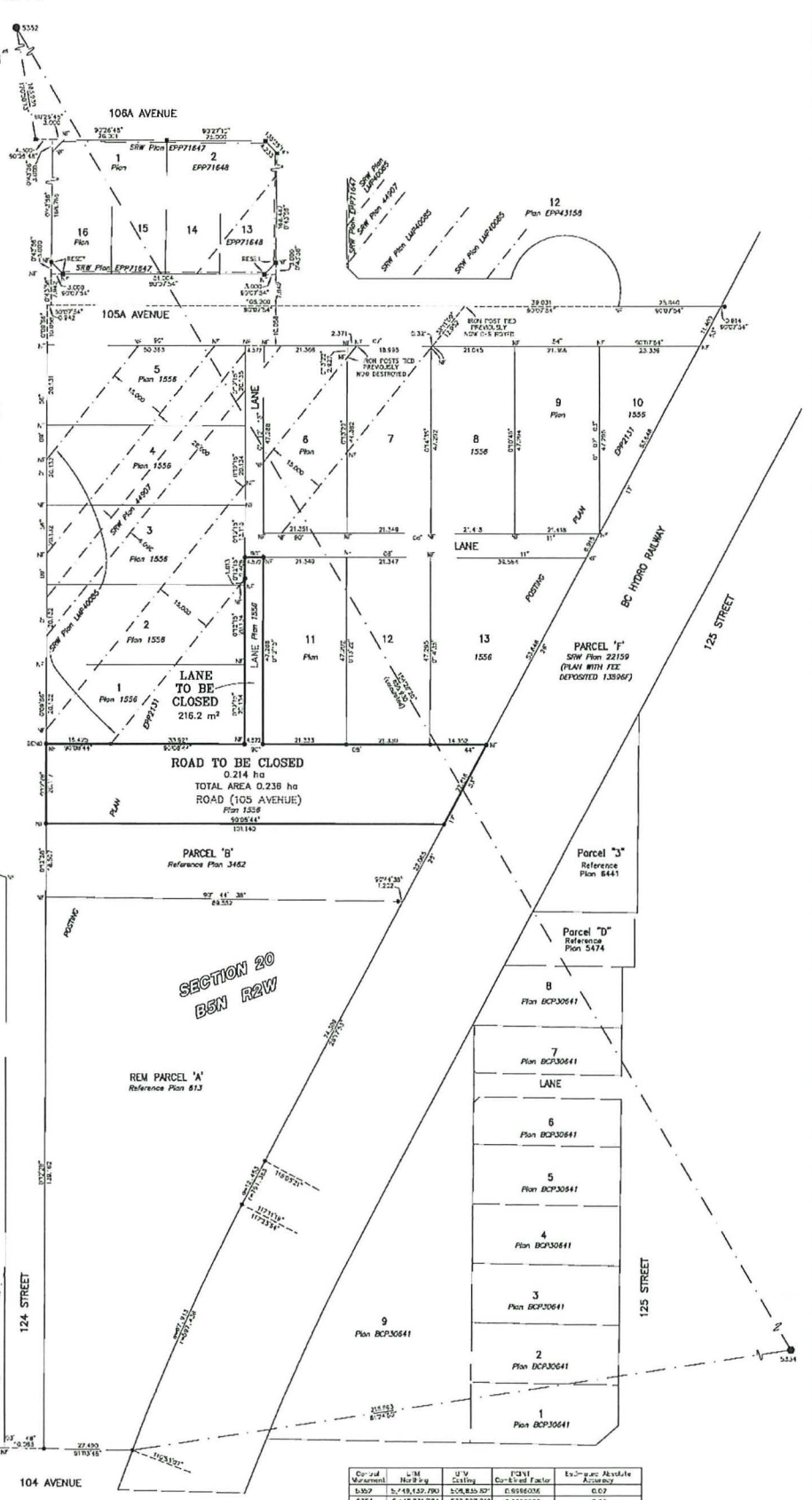
- Legend:
- Geodetic control monument found
 - Geodetic standard iron post found
 - Geodetic standard iron post set
 - Geodetic lead plug found
 - ⊠ Geodetic lead plug set
 - ⊞ Geodetic surveying board
 - ⊟ Geodetic witness
 - ⊠ Geodetic post was reset using original survey control (see Plan EPP11649)

Note:
 This plan shows one or more witness posts
 which are not set on the true corner(s).



1
Plan BCP32461

ROAD CLOSURE AREA	
BOOK OF REFERENCE	
Description	Area (m ²)
Road, Plan 1556	2,142.7
Lane, Plan 1556	216.2
Total	2,358.9



BUILDING STRATA
 Plan EPS1911
 (Plan BCP46912)

SECTION 20
 B5N R2W

REM PARCEL "A"
 Reference Plan 813

ROAD TO BE CLOSED
 0.214 ha
 TOTAL AREA 0.238 ha
 ROAD (105 AVENUE)
 Plan 1556
 509844'
 521142'

PARCEL "B"
 Reference Plan 3452

Parcel "J"
 Reference Plan 8441

Parcel "D"
 Reference Plan 5474

8
 Plan BCP30641

7
 Plan BCP30641

LANE

6
 Plan BCP30641

5
 Plan BCP30641

4
 Plan BCP30641

3
 Plan BCP30641

2
 Plan BCP30641

1
 Plan BCP30641

Control Monument	U-M Northing	U-M Easting	CPM Corrected Factor	Estimated Absolute Accuracy
5352	5745.157 790	508,825 807	0.9998036	0.07
5354	5745.835 784	508,597 810	0.9997992	0.09

Compton Land Surveying (2014) Ltd
 B.C. Land Surveyors
 Unit 234, 18325 - 53rd Avenue
 Surrey, B.C. V3S 2A4
 Phone: 604-597-3777
 Fax: 604-597-3771

This plan lies within the Metro Vancouver Regional District

The field survey represented by this plan was
 completed on the 28th day of October, 2021.
 Kenneth W. Schuurman, B.C.L.S. (600)